



Legend

Base Layers	Zoning
LOS ANGELES COUNTY	ZONE A-1
OTHER COUNTY	ZONE A-2
PACIFIC OCEAN	ZONE B-1
UNINCORPORATED AREAS	ZONE B-2
INCORPORATED CITIES	ZONE C-1
HYDRO - PERENNIAL	ZONE C-2
HYDRO - INTERMITTENT	ZONE C-3
HYDRO - DRY	ZONE C-H
HYDRO - LINE	ZONE C-M
FREIGHTWAYS	ZONE C-P
NATIONAL FOREST	ZONE D-1
PARCEL BOUNDARY	ZONE D-2
SUPERVISORIAL DISTRICT	ZONE D-3
TRANSIT - RAILROAD	ZONE D-4
TRANSIT - RAPID TRANSIT	ZONE D-5
TRANSIT - UNDERGROUND	ZONE D-6
SUBDIVISION ACTIVITY - APPROVED	ZONE D-7
SUBDIVISION ACTIVITY - INACTIVE	ZONE D-8
SUBDIVISION ACTIVITY - PENDING	ZONE D-9
SUBDIVISION ACTIVITY - RECORDED	ZONE D-10
AMB (ASSESSOR MAP BOOK) GRID	ZONE D-11
SEA (SIGNIFICANT ECOLOGICAL AREA)	ZONE D-12
SSD (COH. STANDARDS DISTRICT)	ZONE D-13
SSD - AREA SPECIFIC	ZONE D-14
VERY HIGH FIRE HAZARD SEVERITY	ZONE D-15
TOD (TRANSIT ORIENTED DISTRICT)	ZONE D-16
EQD (EQUESTRIAN DISTRICT)	ZONE D-17
THE THOMAS GUIDE - PAGE	ZONE D-18
THE THOMAS GUIDE - PAGE GRID	ZONE D-19
ZD (ZONED DISTRICT)	ZONE D-20
ZONING INDEX MAP GRID	ZONE W
ZONING MAP GRID	
TOWNSHIP & RANGE GRID	
USGS QUAD SHEET GRID	



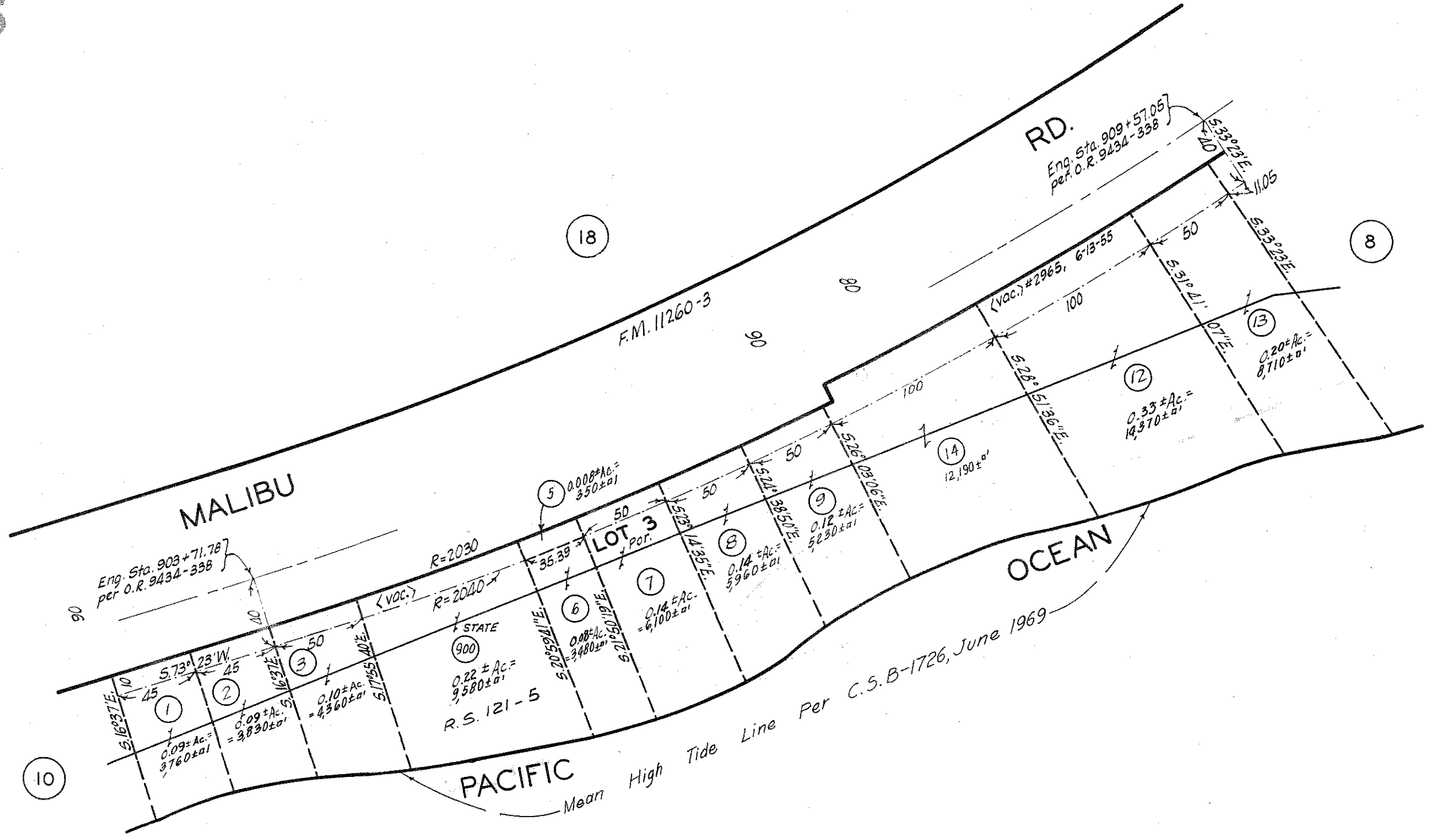
LEGEND MAY NOT CONTAIN ALL LAYERS REPRESENTED IN THE MAP.



Scale: 1:2,465
 Printed On: May 10, 2011
 GIS-NET | Public Web Mapping Application

Copyright 2007 - Los Angeles County Department of Regional Planning, created by the GIS Section
 Printed with permission by the Los Angeles County Dept. of Regional Planning. All rights reserved.
 Note: This map represents a quick representation of spatial imagery or vector layers using GIS-NET.
 The map should be interpreted in accordance with the disclaimer statement of GIS-NET.

2005



LAND OF MATTHEW KELLER
IN THE RANCHO TOPANGA MALIBU SEQUIT
R. F. 534

CODE
10865

FOR PREV. ASSM'T. SEE:
4458 - 9

ASSESSOR'S MAP
COUNTY OF LOS ANGELES, CALIF.