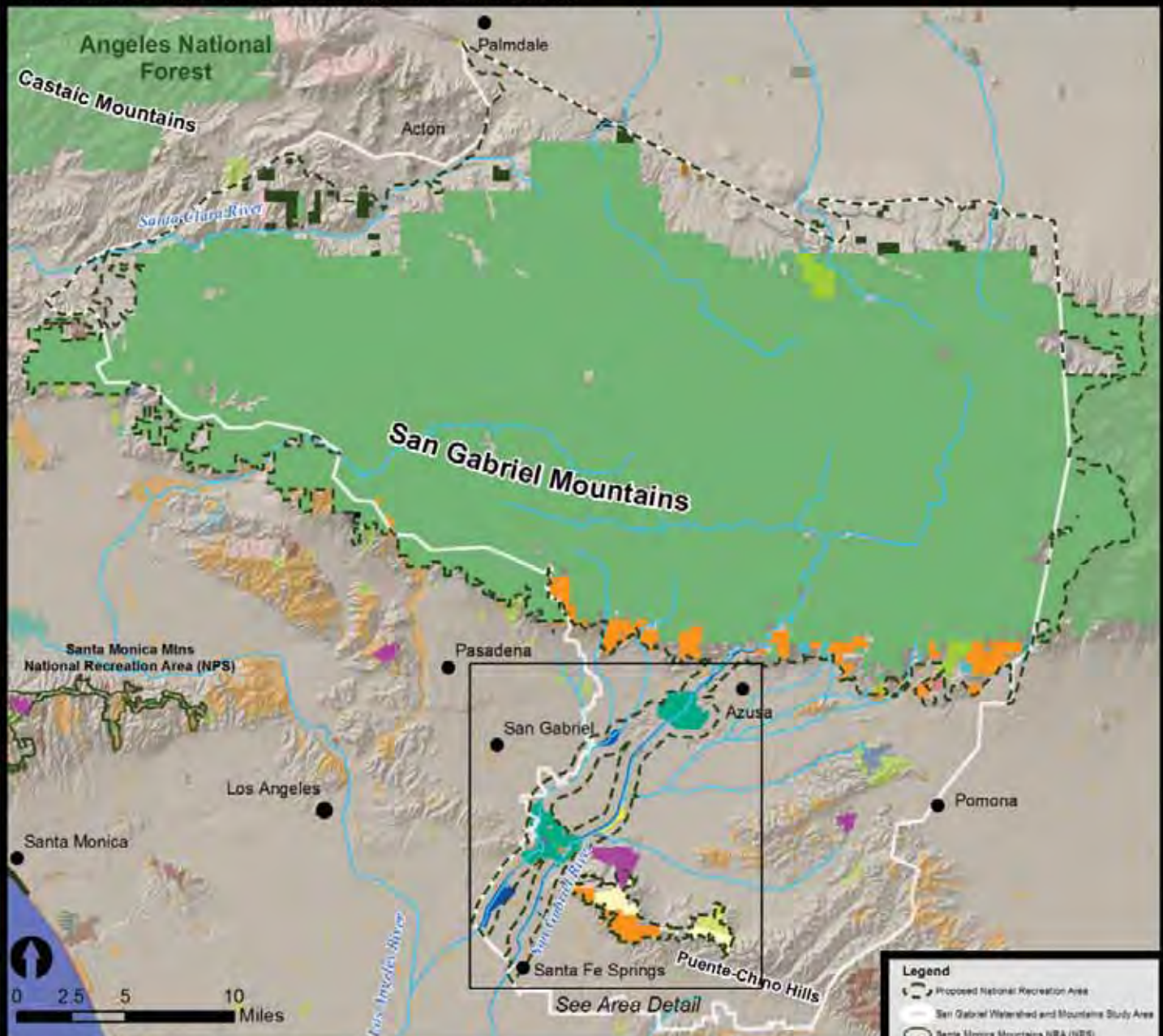


# Alternative D: San Gabriel Region National Recreation Area: A Partnership Linking Significant Resources and Recreation

Agenda Item 9(a)  
SMMC  
12/5/11

## San Gabriel Watershed and Mountains Special Resource Study



### Alternative D Highlights

- A larger NRA focused on conservation of significant resources, recreation and education
- Enhanced access to existing public lands
- New recreation opportunities for urban communities
- Protection of significant resources
- Interpretive and educational programs and outreach to youth
- Technical assistance program to form a network of parks, habitats, and open spaces.
- Various public and private funding sought to achieve goals



National Park Service, Pacific West Regional Office  
Updated August 2011

The NPS makes no warranty, express or implied, related to the accuracy or content of this map.

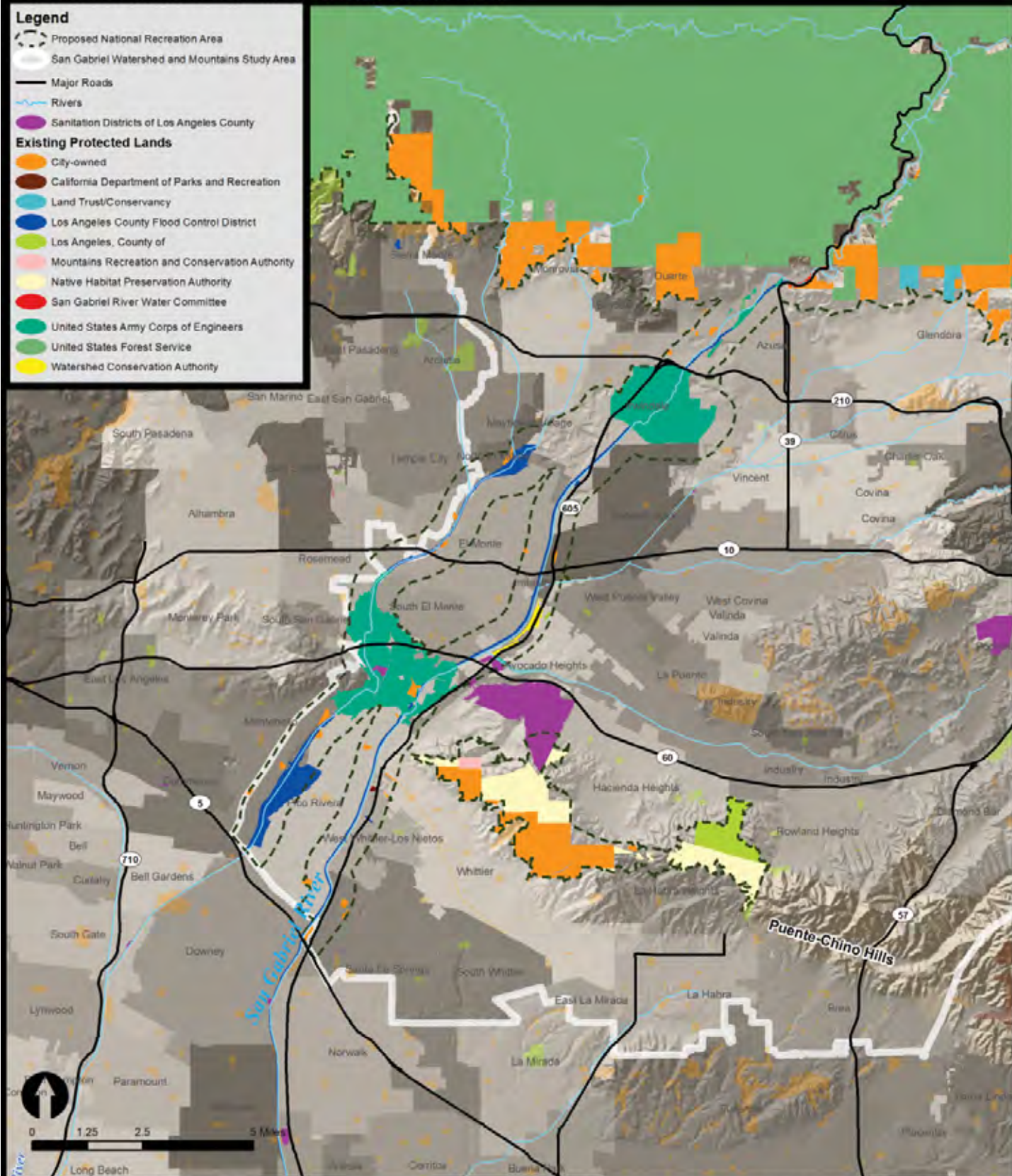
Sources: Existing Protected Lands, CPAD 1.5, June 2010  
GreenInfo Network - [www.calands.org](http://www.calands.org), Proposed Alternatives  
and Study Area (NPS), Rivers (National Hydrography Dataset, USGS)



# Alternative D: San Gabriel Region National Recreation Area: A Partnership Linking Significant Resources and Recreation

## Area Detail - River Corridor and Puente Hills

### San Gabriel Watershed and Mountains Special Resource Study



National Park Service, Pacific West Regional Office  
Update August 2011

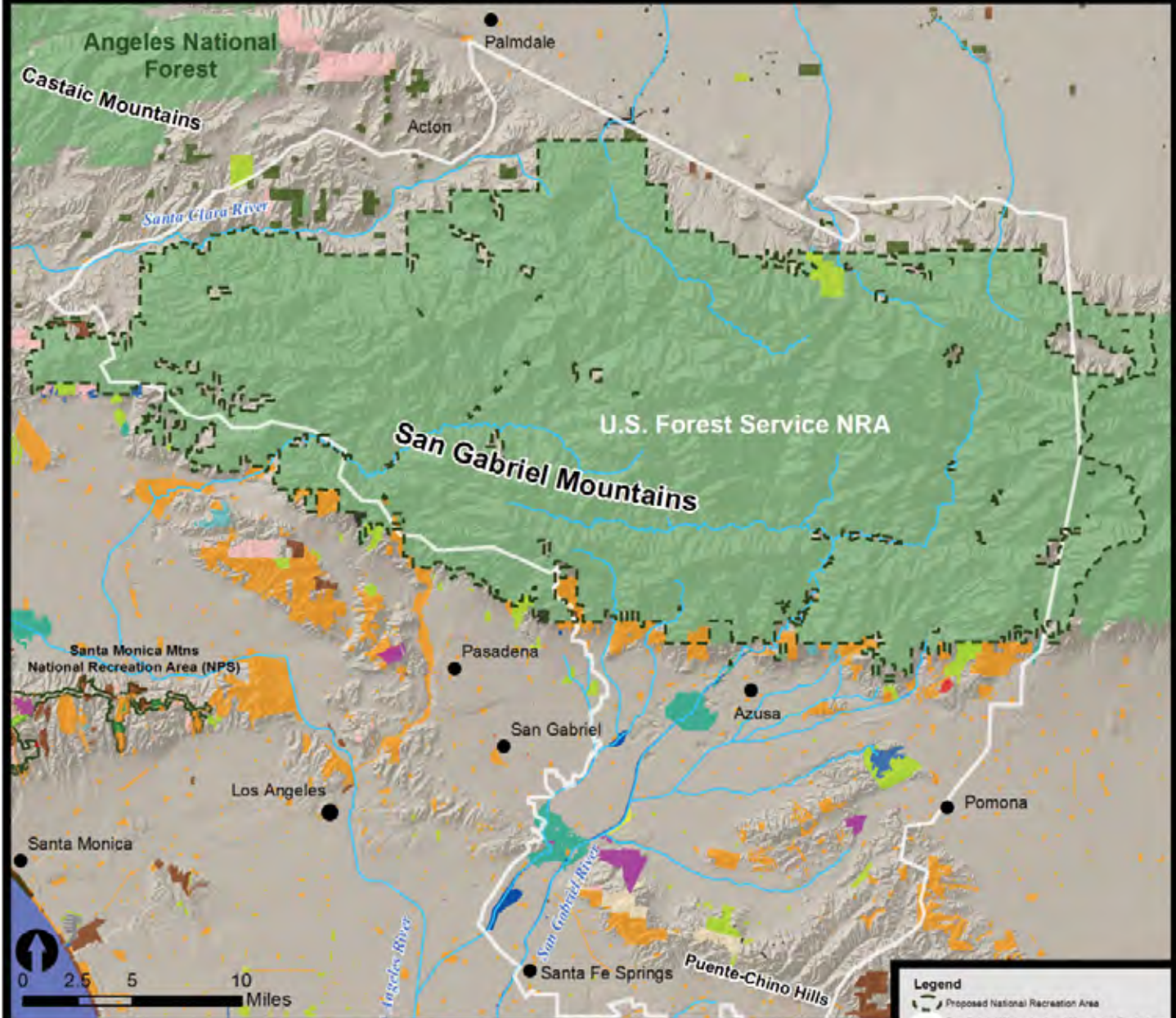
The NPS makes no warranty, express or implied, related to the accuracy or content of this map.

Sources: Existing Protected Lands, CRAD 1.5, June 2010  
GreenInfo Network - [www.calands.org](http://www.calands.org), Proposed Alternatives and Study Area (NPS), Rivers (National Hydrography Dataset, USGS)



## Alternative A: San Gabriel Mountains National Recreation Area (A U.S. Forest Service Designation)

### San Gabriel Watershed and Mountains Special Resource Study



### Alternative A Highlights

The San Gabriel Mountains unit of the Angeles National Forest would be designated a National Recreation Area (NRA).

The NRA would continue to be managed solely by the U.S. Forest Service.

Designation would bring additional recognition, tools, and resources to the Angeles National Forest to steward resources and improve recreational opportunities.

The NRA would reaffirm the primary importance of the Angeles National Forest in preserving watershed resources.

Existing recreational uses would continue.

Future management practices and uses would be compatible with protecting watersheds and significant resources.

No unit of the national park system would be established.

National Park Service, Pacific West Regional Office

August 2011

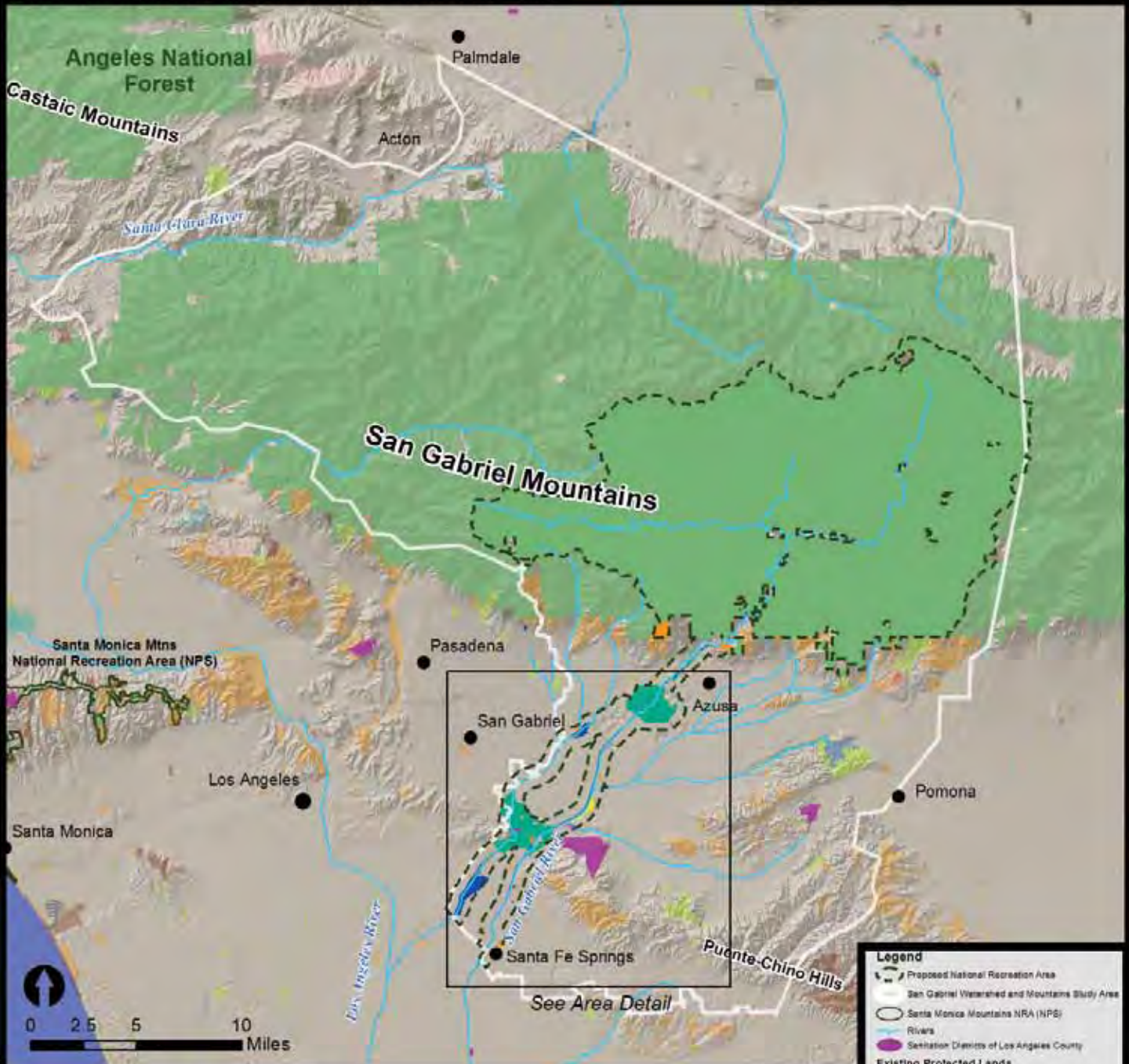
The NPS makes no warranty, express or implied, related to the accuracy or content of this map.

Sources: Existing Protected Lands, California Protected Areas Database (June 2010), Proposed Alternatives and Study Area (NPS), Rivers (National Hydrography Dataset, USGS).



## Alternative C: San Gabriel Watershed National Recreation Area

### San Gabriel Watershed and Mountains Special Resource Study



### Alternative C Highlights

- River-based national recreation area emphasizing new educational and interpretive opportunities in the watershed
- Enhanced access to existing public lands in the NRA
- Improved recreation opportunities for urban communities
- Interpretive and educational programs and outreach to youth
- Various public and private funding sought to achieve goals

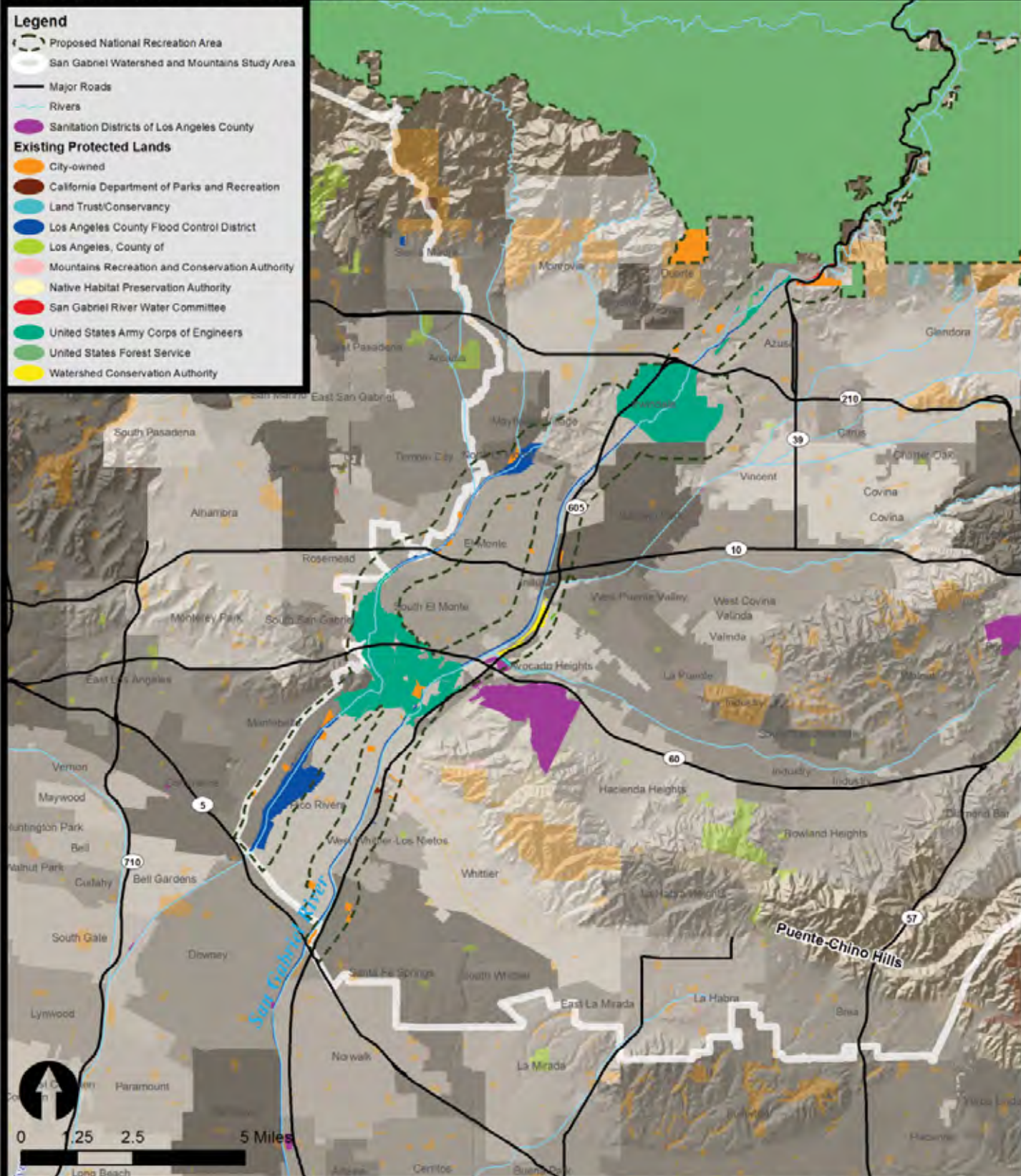
National Park Service, Pacific West Regional Office  
Updated August 2011  
The NPS makes no warranty, express or implied, related to the accuracy or content of this map

Sources: Existing Protected Lands, CPAD 1.5, June 2010  
GreenInfo Network - [www.calandis.org](http://www.calandis.org) - Proposed Alternatives and Study Area (NPS), Rivers (National Hydrography Dataset, USGS)



## Alternative C: San Gabriel Watershed National Recreation Area River Corridor Detail

### San Gabriel Watershed and Mountains Special Resource Study



National Park Service, Pacific West Regional Office  
Updated August 2011  
The NPS makes no warranty, express or implied, related to the accuracy or content of this map.

Sources: Existing Protected Lands, CPAD 1.5, June 2010  
GreenInfo Network - [www.zalands.org](http://www.zalands.org), Proposed Alternatives and Study Area (NPS), Rivers (National Hydrography Dataset, USGS)