


<b>SANTA MONICA MOUNTAINS CONSERVANCY GRANT APPLICATION</b>			
Project Name: Open Space, Trail, and Greenway Planning Study		Amount of Request: \$32,000 Total Project Cost: \$35,000	
Applicant Name: (PVRPD) Pleasant Valley Recreation and Park District		Amount of Match: \$3,000 SMMC Fund Source(s): Proposition 84 Source of Match: PVRPD General Fund	
Applicant Address: Phone: Fax: 1605 E. Burnley Street, Camarillo, CA 93010 (805) 482-1996 fax (805) 482-3468		Project Address: 1605 E. Burnley Street Camarillo, CA 93010	
		County	Senate District
		Ventura	19
			Assembly District 37
Email: <a href="mailto:msolecki@pvrpd.org">msolecki@pvrpd.org</a> <a href="mailto:dwagar@pvrpd.org">dwagar@pvrpd.org</a>			
Grantee's Authorized Representative:  Dan LaBrado, General Manager			
Person with day-to-day responsibility for project:  Daryl Wagar, Parks Superintendant			
Brief Scope of Work (60 words maximum): Develop an <i>Open Space, Trail and Greenway Planning Study</i> of the approximately 6,300 acres of land overlapping the Santa Monica Mountain Conservancy and Pleasant Valley Recreation Park District boundaries. Specifically the project will inventory, map, and analyze land ownership, trail systems, and greenway usage of the area.			
Funding Source Applied for: Proposition 84			
Narrative/Detailed Project Description: <i>Full description attached</i>			
Tasks / Milestones: Budget: \$35,000 Start Date: February 2012  <i>Full description attached</i>		Completion Date:  October 2012	
Acquisition Projects: APN(s): Acreage: Not applicable			
I certify that the information contained in this Grant Application form, including required attachments, is accurate.			
Signature of Authorized Representative			
		Date 12/21/11	
STATE OF CALIFORNIA ♦ THE RESOURCES AGENCY			

**SMMC 2011 GRANT APPLICATION**  
**Pleasant Valley Recreation and Park District**

**Scope of Work:**

Develop an *Open Space, Trail and Greenway Planning Study* of the approximately 6,300 acres of land overlapping the Santa Monica Mountain Conservancy and Pleasant Valley Recreation Park District boundaries. Specifically the project will inventory, map, and analyze land ownership, trail systems, and greenway usage of the area.

**Specific Tasks:**

Pleasant Valley Recreation and Park District (PVRPD) would hire an environmental consulting firm to compile field data, survey existing plans, create maps, review demographics, verify local and regional community needs, identify opportunities, make recommendations, and identify viable projects. They would develop a ranking system to rate such factors as public access to properties, key trail head locations, and parties interested in parcel sales. Another component included, for public outreach, would be contracting a professional to design an online survey. The survey is important in identifying needs of the community through public opinion.

The consulting firm would create a base map of existing public and private land ownership and utilizing the ranking system, identify future key acquisitions for open space and trail/pathway linkages. Identifying ownership, parcel availability, deed restricted property, easements, and access strategies to open space and trail heads would assist in prioritizing the best parcels to acquire, hold, and protect.

The study would also include mapping existing hiking and biking trails leading to and within the overlapping boundaries. It would identify parcels that could be used to develop connections, trails, and bike paths; ultimately creating a greenway network that would serve the community and increase access to the hillsides and open spaces.

Another aspect the consultant would complete is evaluate the feasibility and scalability of potential projects within the outlined zone, such as acquisition and trail building. The study would identify property owners, organizations, and agencies that have jurisdiction or interests within and bordering the study area which align with the District's. Once these stakeholders are identified the District would facilitate opportunities to network with and initiate collaborative efforts to preserve and provide public access in the study area.

The study would evaluate the integration of proposed projects with other conceptual projects on the boundary line of the overlapping area that would enhance and align with the goal of *SMMC-interlinking network of parks, trails, and open space for public use and wildlife habitat, ensuring future open space and recreational lands in Los Angeles and Ventura Counties*. There are two potential development projects that fit this criterion currently. One is the construction of a bike path connecting the college campus (CSUCI) with the Camarillo community along the Conejo

and Calleguas creeks. That proposed path would eventually network through neighboring residential communities to connect with Camarillo's existing bike path. Once complete the entire system would provide access to the business district, industrial area, Camarillo Amtrak Station, Camarillo Library and eventually the city center of Camarillo.

The second proposed project Pleasant Valley Recreation and Park District would be involved with is the preservation of approximately 90 acres of open space, plus additional hillside acreage, at the base of Conejo Mountain along the convergence of the Conejo and Calleguas Creeks. This project involves the preservation of the current creek beds and surrounding habitat. The timing of this project is critical. PVRPD has been approached recently to collaborate with the Department of Navy Point Mugu Naval Base, the Nature Conservancy and Trust for Public Lands to jointly acquire and become the stewards of this property.

### **Detailed Budget:**

<i>Environmental Consulting Firm</i>	\$30,000
<i>Professional Survey Design</i>	<u>\$ 2,000</u>
Expenses Subtotal	\$32,000

<i>Administrative Support (40 hrs x \$25/hr)</i>	\$ 1,000
<i>Parks Superintendant (40 hrs x \$50/hr)</i>	<u>\$ 2,000</u>
In-kind Subtotal	\$ 3,000

Total Project Expenses \$35,000

### **Timeline for Project Implementation:**

1. Develop Request for Proposal- *March 2012*
2. PVRPD Board approval of RFP- *April 2012*
3. Open for submittal- *April 2012*
4. Review and choose firm- *May 2012*
5. Meet with firm and discuss deliverables- *May 2012*
  - Catalog and map existing properties and trails within PVRPD boundaries
  - Identify best linkages for public access and usage
  - Identify potential connectivity routes from existing pathways to high usage areas
  - Identify potential property acquisition for open space and parks
  - Identify key partners
6. Hire community survey designer- *May 2012*
7. Conduct online survey- *May 2012*
8. Review final online survey result & present to consulting firm- *June 2012*
9. Meet regularly with firm to monitor progress- *June to September 2012*
10. Final review and approval of plan- *October 2012*

## **Preliminary Project Plans:**

Not applicable

## **Detailed Description of Need:**

Pleasant Valley Recreation and Park District serves a 45 square mile area including the 19.54 square miles of the City of Camarillo; within a 10-mile radius there is a population of 441,583 people. According to the 2010 Census Camarillo's population has increased 14.2% from 2000 to 2010 and is the second fastest growing city in Ventura County. The average population increase for the State of California was 10%. The rate is expected to continue to increase as there are two developments planned in the near future within Camarillo totaling an additional estimated 3,850 housing units.

Yearly, the District directly provides services to over 75,000 people. PVRPD operates 27 parks, of which only one, Camarillo Grove, is nature-based and has a small hiking trail system. Long range goals of the District include: acquisition and preservation of open space; development of venues for outdoor education, hiking, and biking; and developing collaborative projects with the City, County and community organizations to develop interconnecting greenways leading into, out of and throughout the community.

Creating a long-range plan is necessary as natural spaces dwindle because of increased population and housing development. In order to conserve these spaces for future use it is imperative the parks and recreation districts increase the amount of acreage they hold and steward for the public. Connecting residents within the community to nature and each other, by developing alternative non-vehicular transportation routes is becoming a core need nation-wide and within California cities. Equally collaborating with other agencies in surrounding communities is a necessity to leverage resources and reduce redundancies.

Based on a *2007 Survey on Public Opinions and Attitudes on Outdoor Recreation in California* conducted by the California Department of Parks and Recreation, the highest recreation priorities identified as a need for Ventura County were day hiking trails and bike paths. There is a shortage of these much needed opportunities for the community.

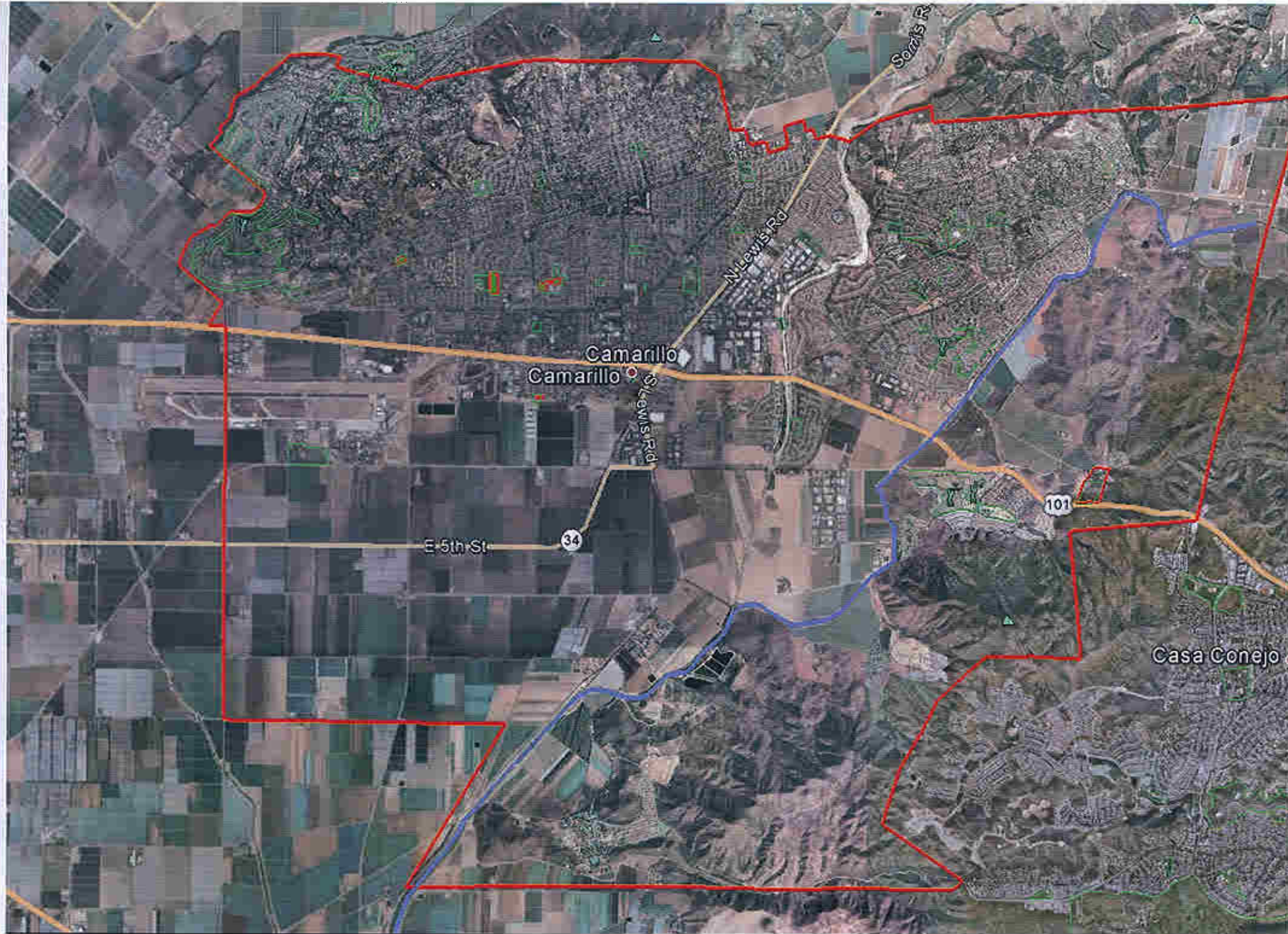
Those results were corroborated with results from a District online survey conducted in November 2011. The results were as follows: 55.6% of respondents indicated they travel 10 miles or more to access nature-based recreation and outdoor education opportunities. When asked if they wanted to have more local opportunities for nature-based recreation activities and outdoor education in the community, 66% indicated they wanted "some" to "a lot more", and 13.8% indicated they wanted a "little more". When asked how important they value outdoor recreation, 81.6% indicated "very important" to "extremely important". When asked if the community needs more outdoor recreation opportunities, 72.7% indicated "some" to "a lot more" was needed and 14.2% indicated "a little more" was needed.

This project is important for planning future land acquisition, and leveraging resources and partnerships. Also, it is a critical component for the development of a multi-organizational open space preservation plan. That would include: a regional public open space; protected natural habitat and wildlife corridors; increased public trailheads and access; and connect communities together through a system bike paths and hiking trails.

The District will utilize the final *Open Space, Trail and Greenway Planning Study* to identify how and when key objectives will be accomplished. Once that is established management staff, with PVRPD Board support, will begin discussions with identified partners to share information on plan outcomes and coordination of resources. With that information the development of public awareness and outreach regarding the importance, need and availability of such projects will be created and communicated to the community.

**Written Justification for Advance Funds:**

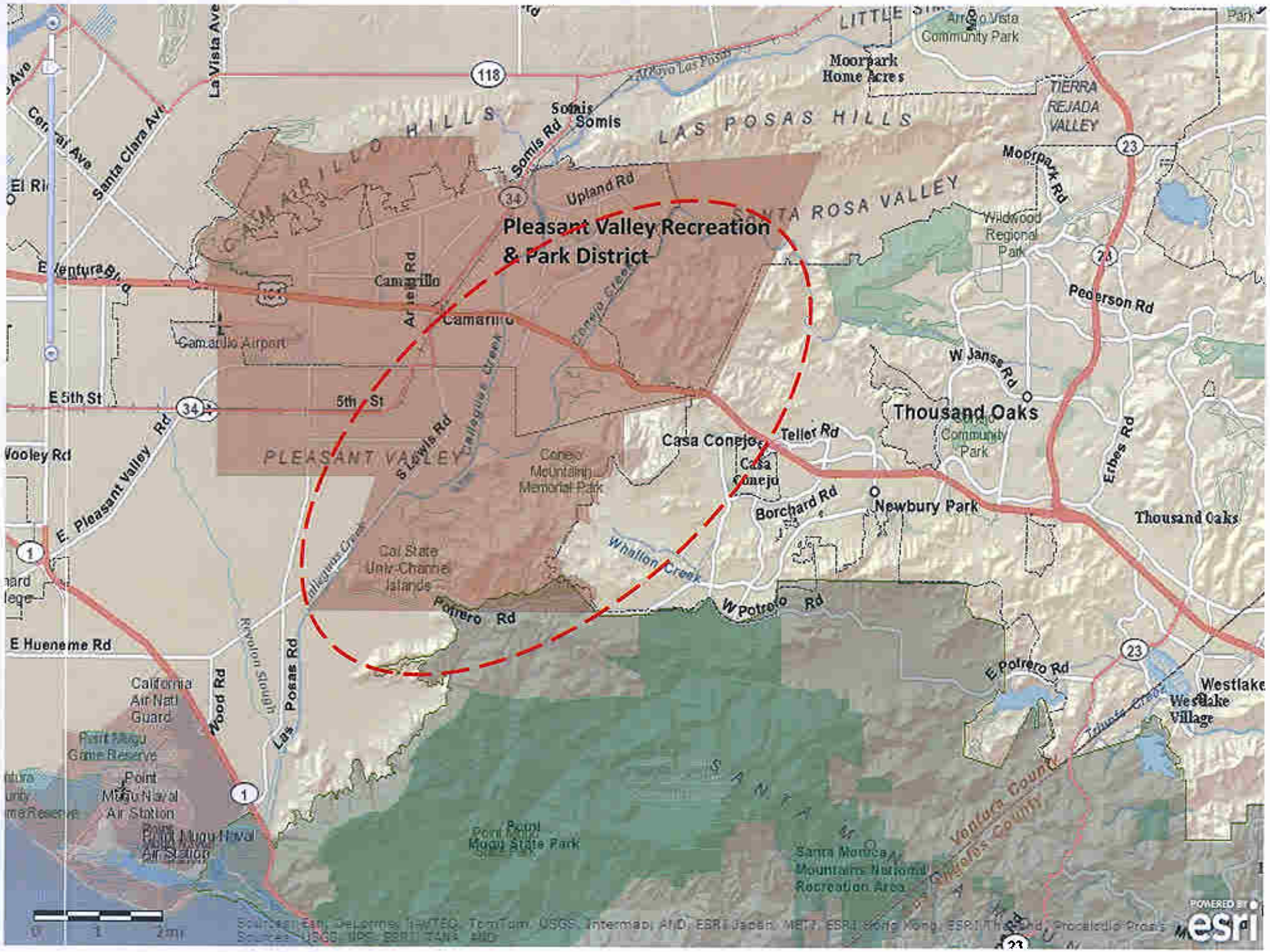
No advanced payment is necessary.



PVRPD Approximate Boundary - - - - -

Calleguas & Conejo Creeks - - - - -

Estimated shared acreage 6,300



### Pleasant Valley Recreation & Park District

PLEASANT VALLEY

LAS POSAS HILLS

SANTA ROSA VALLEY

TIERRA REJADA VALLEY

Thousand Oaks

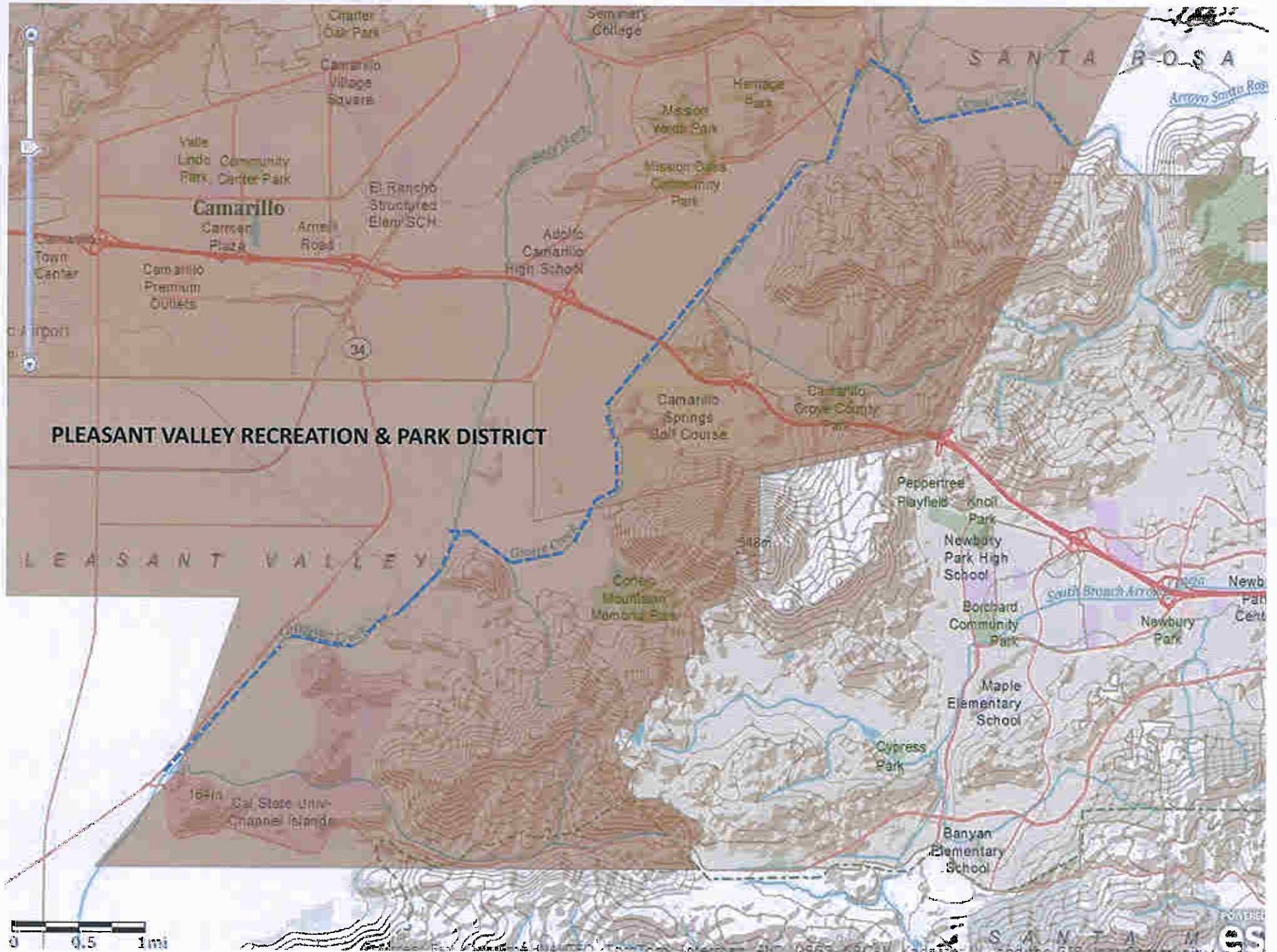
Thousand Oaks

Westlake

Westlake Village

Santa Monica Mountains National Recreation Area

Ventura County  
Santa Barbara County



**PLEASANT VALLEY RECREATION & PARK DISTRICT**

PLEASANT VALLEY

SANTA ROSA

SANTA ANA

