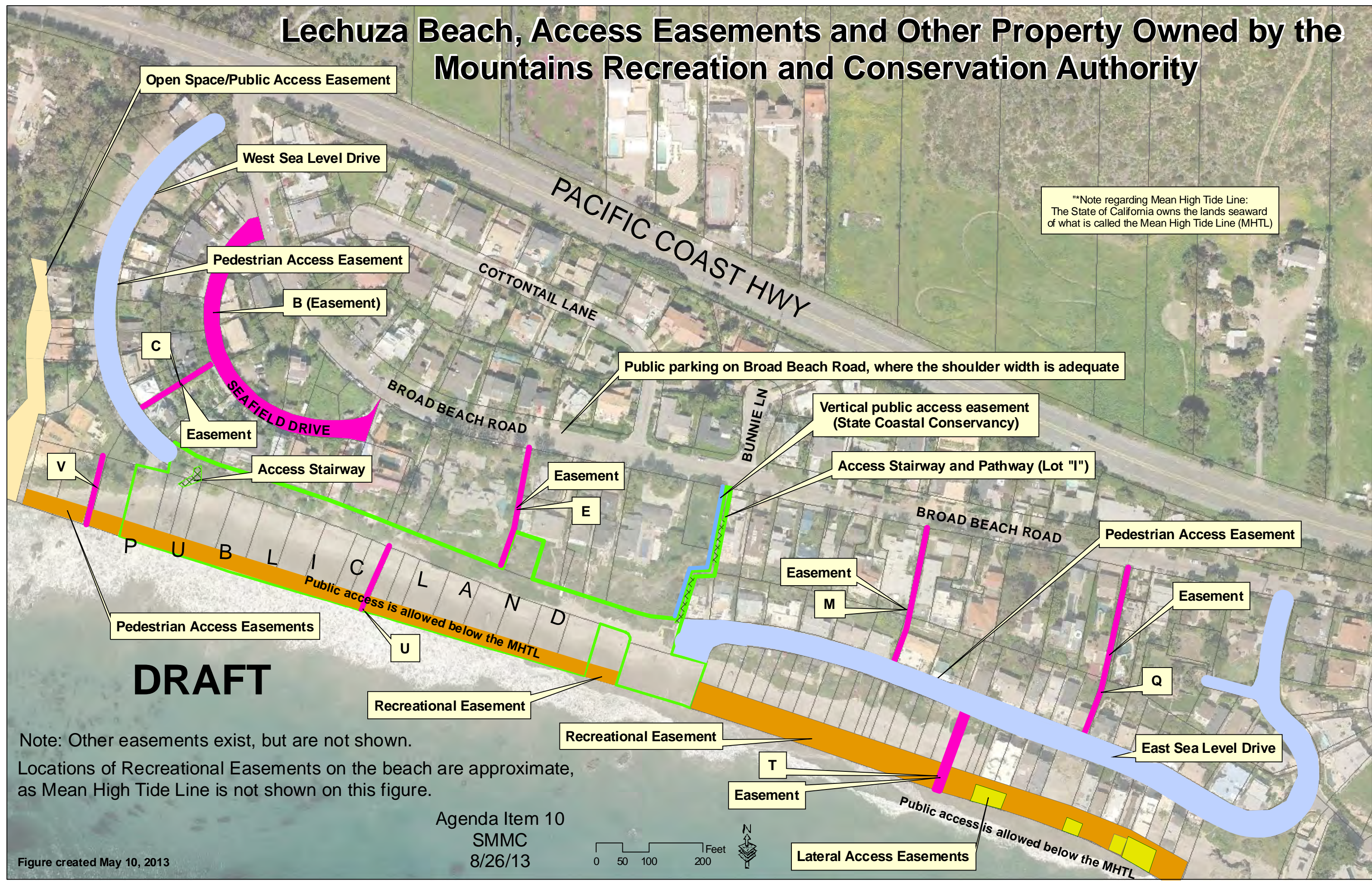


Lechuza Beach, Access Easements and Other Property Owned by the Mountains Recreation and Conservation Authority



**Note regarding Mean High Tide Line:
The State of California owns the lands seaward of what is called the Mean High Tide Line (MHTL)

Public parking on Broad Beach Road, where the shoulder width is adequate

Vertical public access easement (State Coastal Conservancy)

Access Stairway and Pathway (Lot "I")

Pedestrian Access Easement

Easement

East Sea Level Drive

Lateral Access Easements

DRAFT

Note: Other easements exist, but are not shown.
Locations of Recreational Easements on the beach are approximate, as Mean High Tide Line is not shown on this figure.

Agenda Item 10
SMMC
8/26/13

