

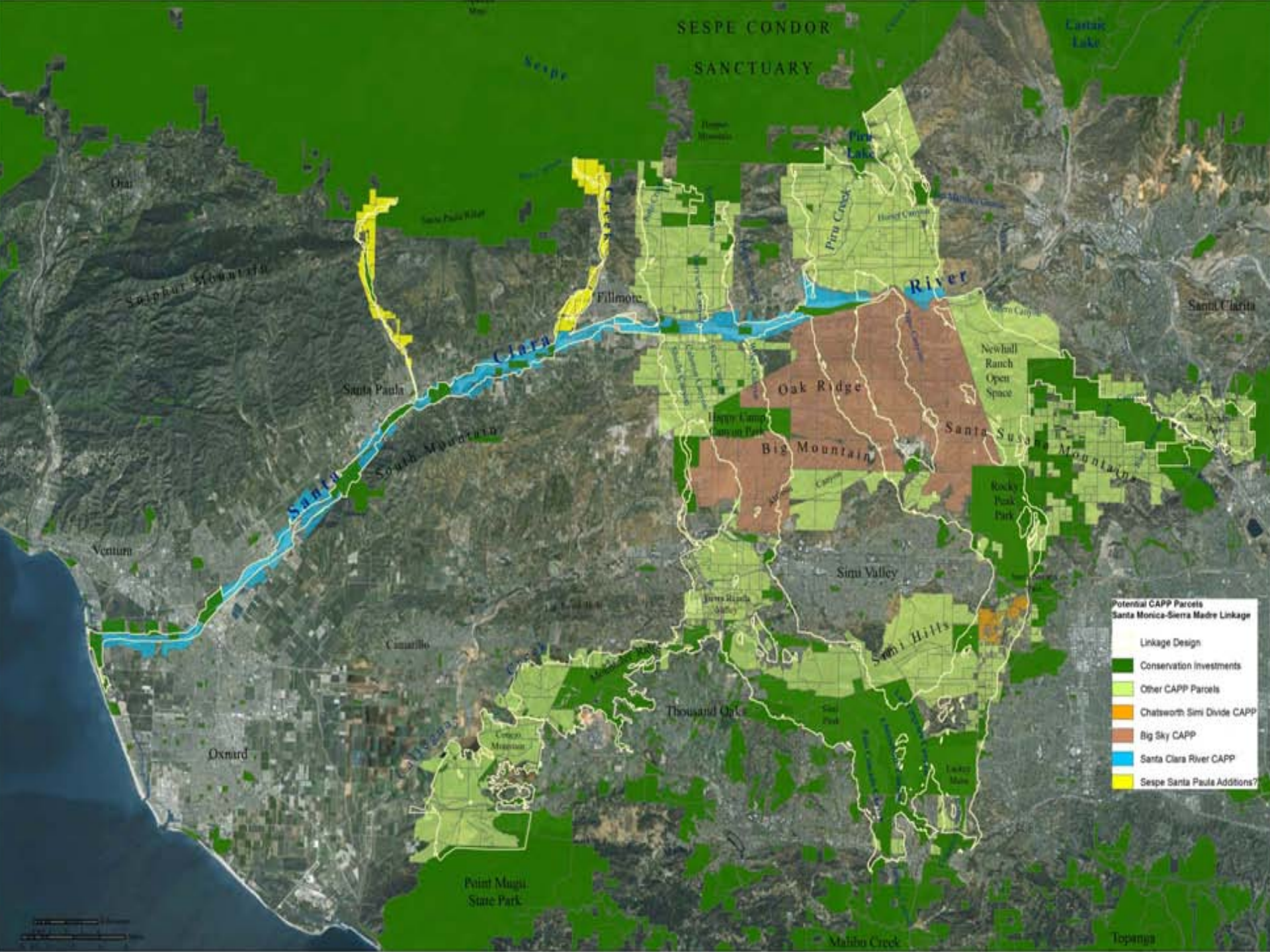


Ventura Council of Governments

July 10, 2014

Ventura County Habitat Linkages

- Opportunities abound – if embraced Today
- The Tierra Rejada Valley and Greenbelt - A wildlife corridor hub on land-use life support.
- The Las Posas Hills and Montclef Ridge – Star linkage actors coming out from the shadows.



SESPE CONDOR
SANCTUARY

Castaic
Lake

Sespe
River

Piru
Lake

Piru
Creek

River

Fillmore

Santa
Paula

Oak
Ridge

Santa
Susana

Big
Mountain

South
Mountain

Ventura

Simi
Valley

Canarillo

Sierra
Hills

Thousand
Oaks

Oxnard

Point
Mugu
State
Park

Malibu
Creek

Topanga

Santa
Clarita

Kanby
Park

Rocky
Peak
Park

Newhall
Ranch
Open
Space

Happy
Camp
Canyon
Park

Sierra
Hills
State
Park

Sierra
Peak

Lake
Meunier

Cerro
Mojave

La
Cumbre

Henry
Wheeler

Wood
Canyon

Green
Canyon

Oban

Sagehen
Mountain

Santa
Paula
River

San
Antonio
River

San
Antonio
River

San
Antonio
River

San
Antonio
River

San
Antonio
River

San
Antonio
River

San
Antonio
River

San
Antonio
River

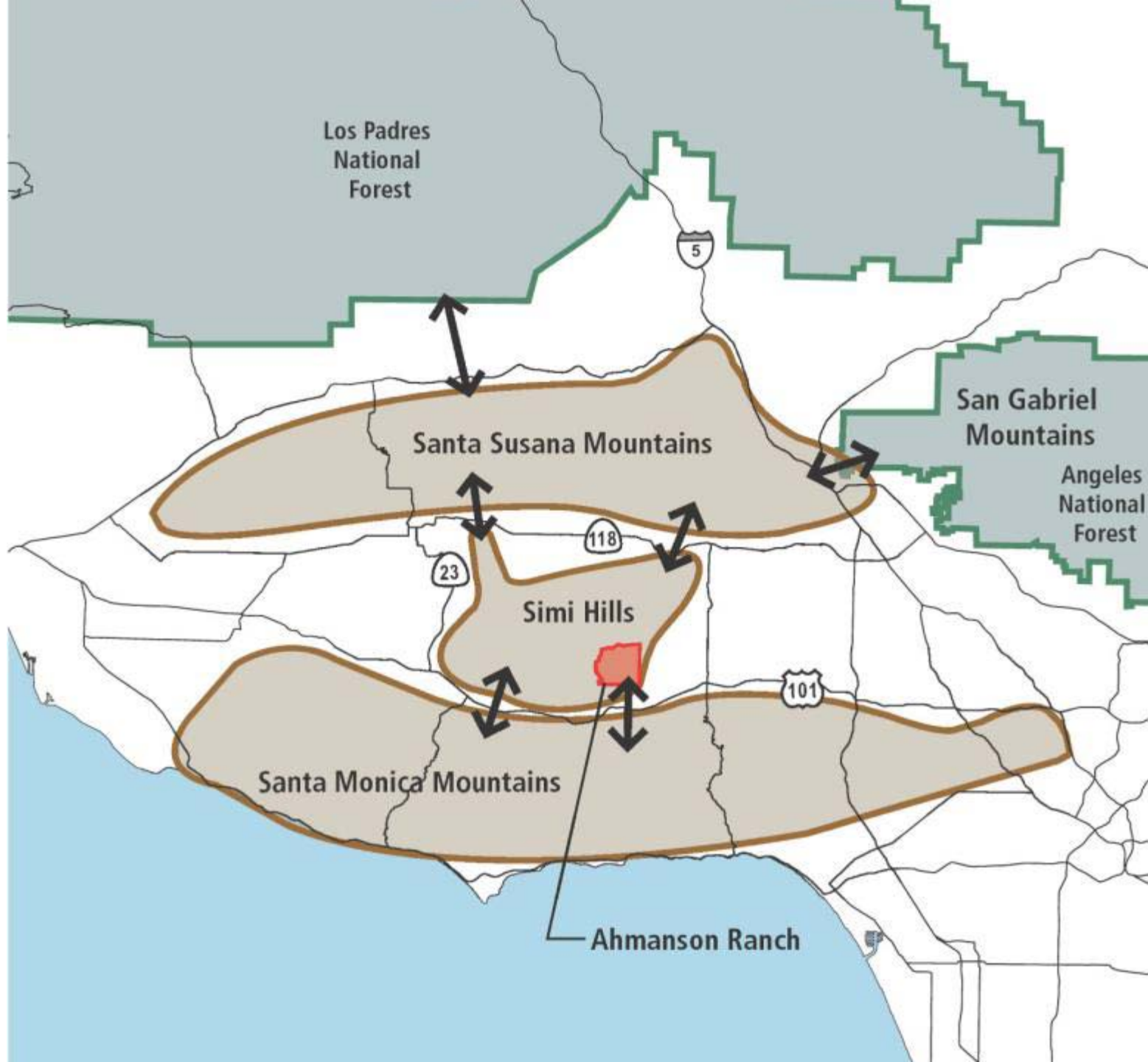


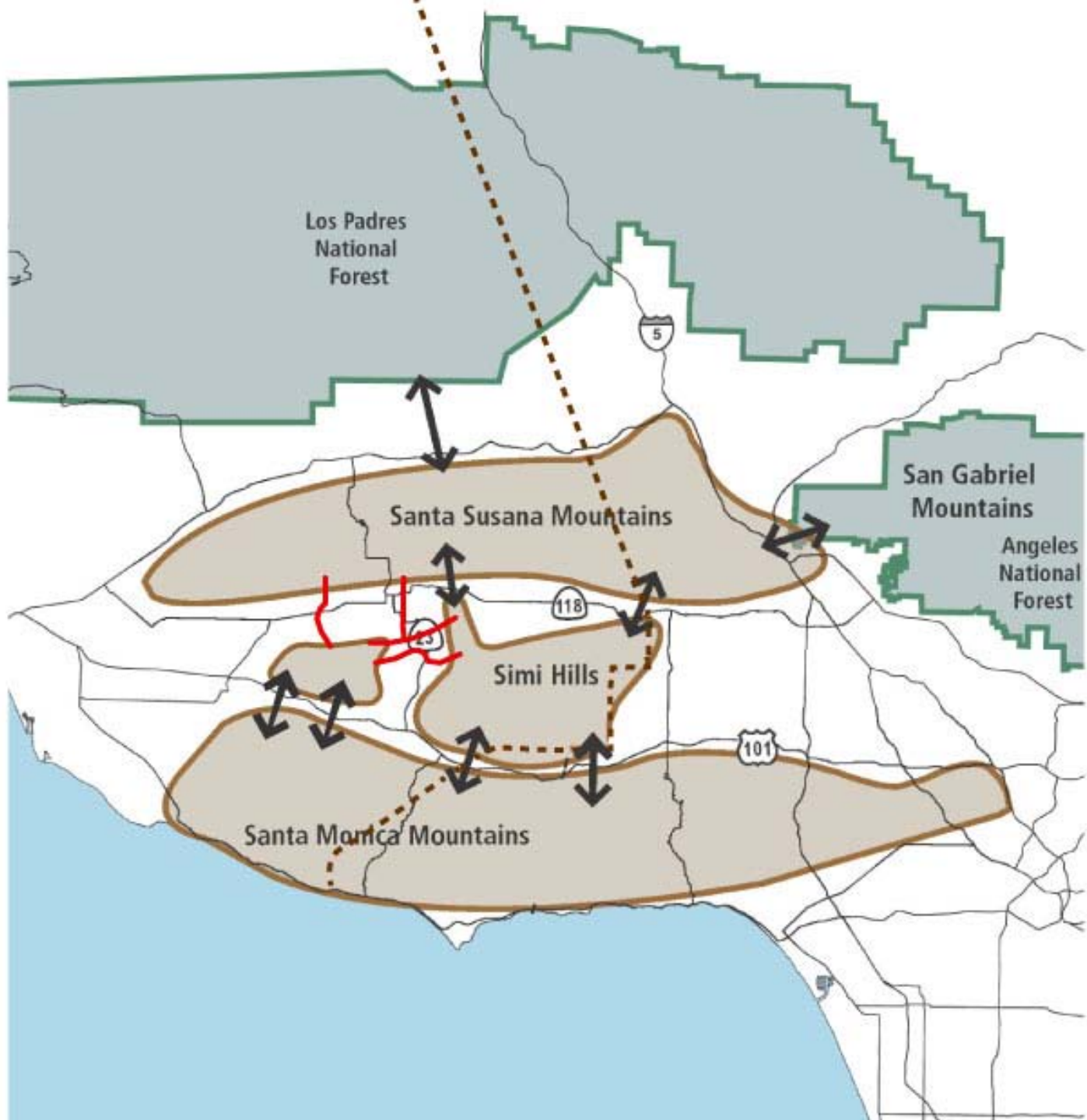




Recent arrivals in the Santa Monica Mtns and Simi Hills

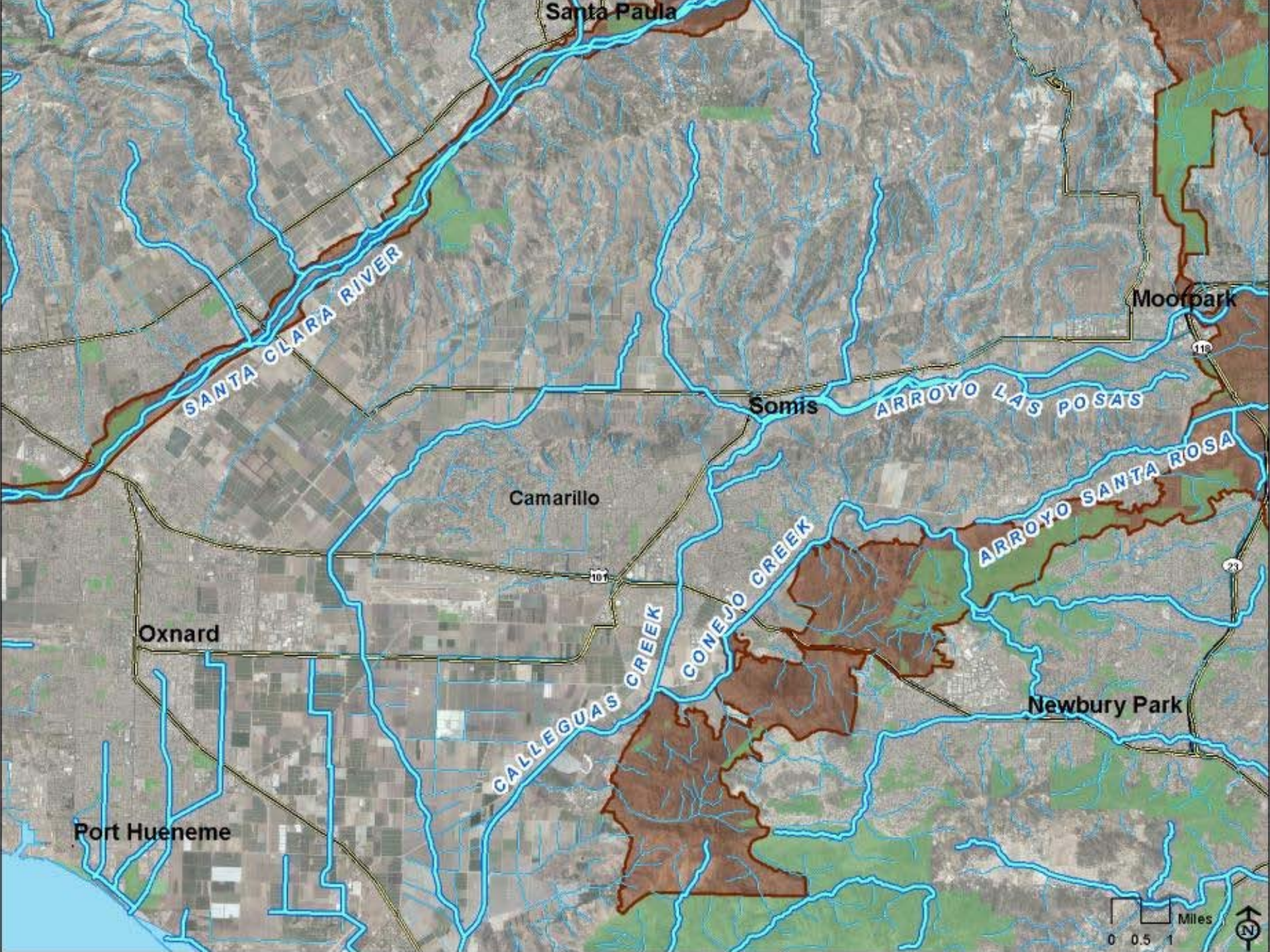






-  Nature Conservancy Property
-  Santa Clara River
-  Public Land
-  LA - Ventura County Line





Santa Paula

SANTA CLARA RIVER

Moorpark

Somis

ARROYO LAS POSAS

Camarillo

ARROYO SANTA ROSA

Oxnard

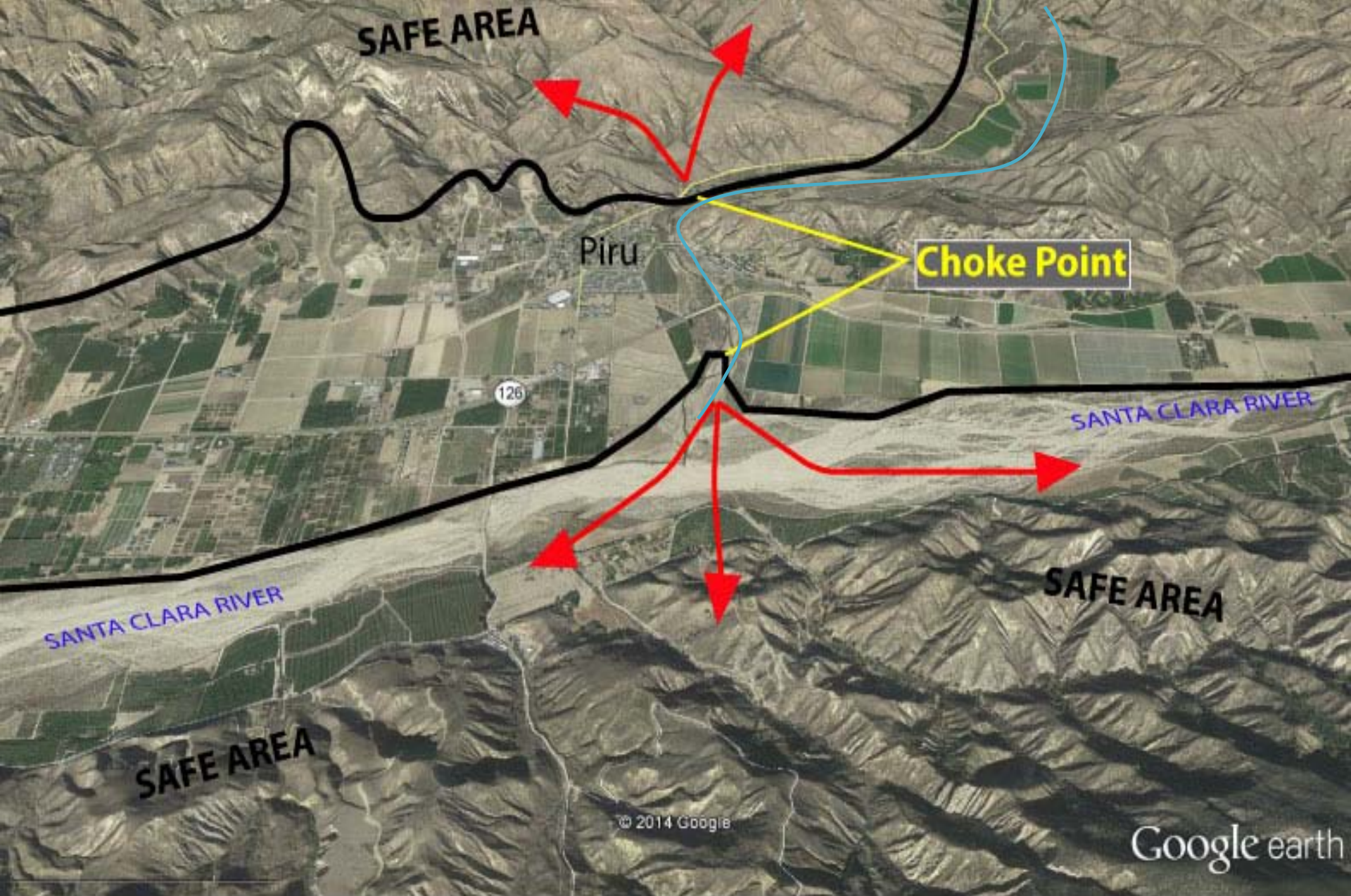
Newbury Park

Port Hueneme

CALLEGUAS CREEK

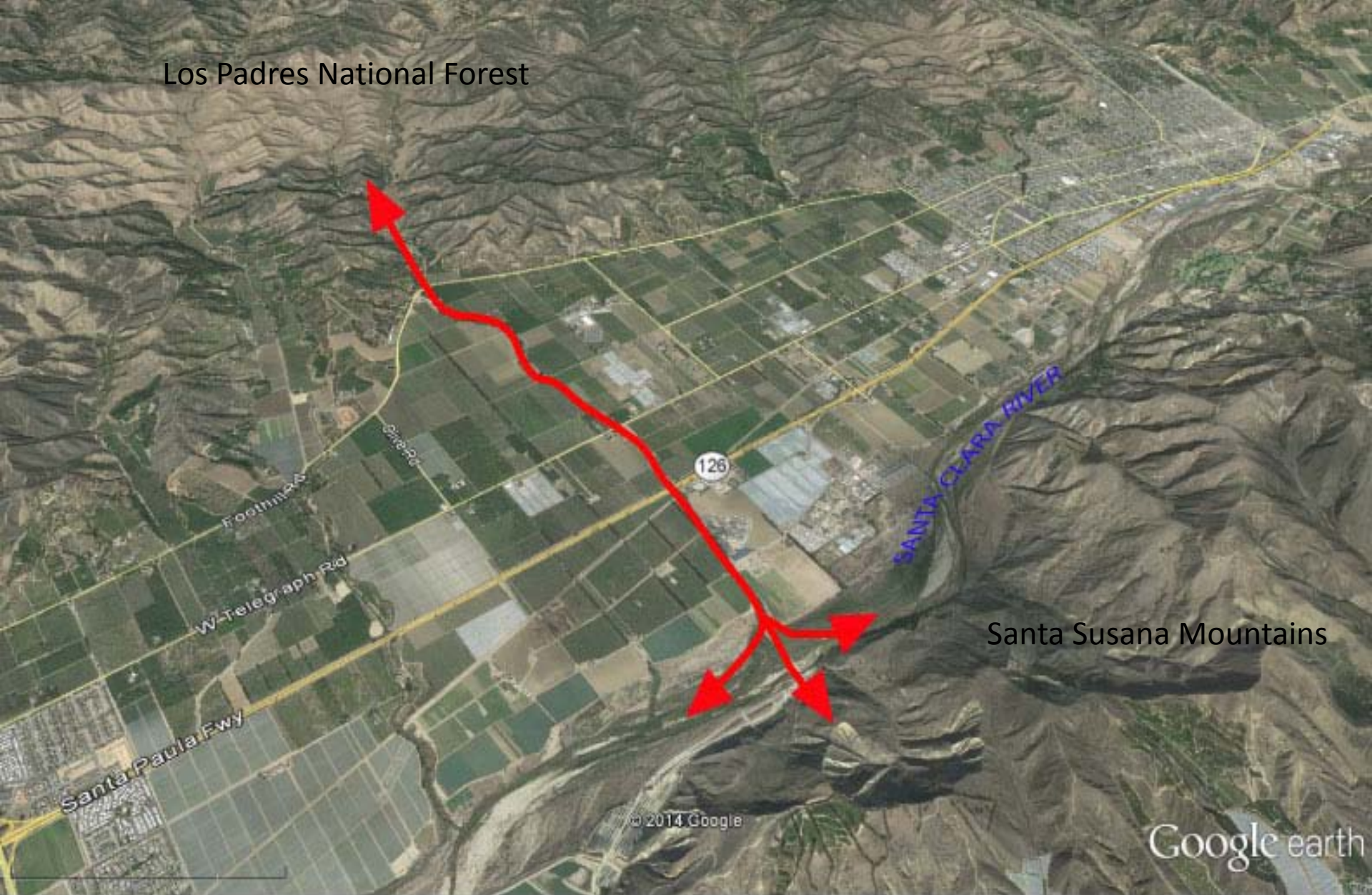
CONEJO CREEK





Piru Creek Inter-Mountain Range Habitat Linkage

Looking North



Los Padres National Forest

Santa Susana Mountains

SANTA CLARA RIVER

126

Santa Paula Fwy

W-Telegraph Rd

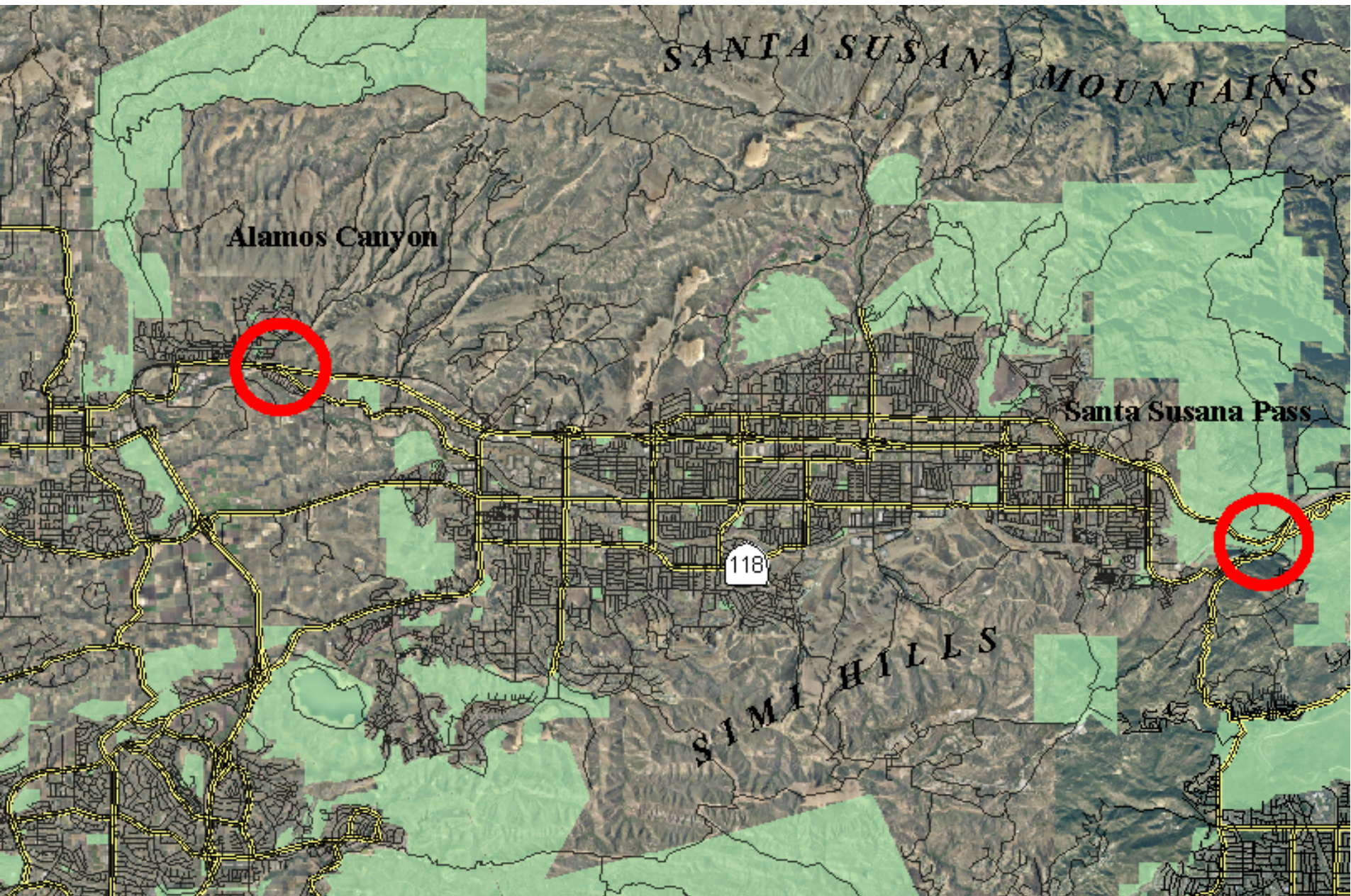
Footprints

Santa Rd

© 2014 Google

Google earth

Great Habitat Linkage Between Los Padres National Forest and Santa Susana Mountains - Including Santa Clara River



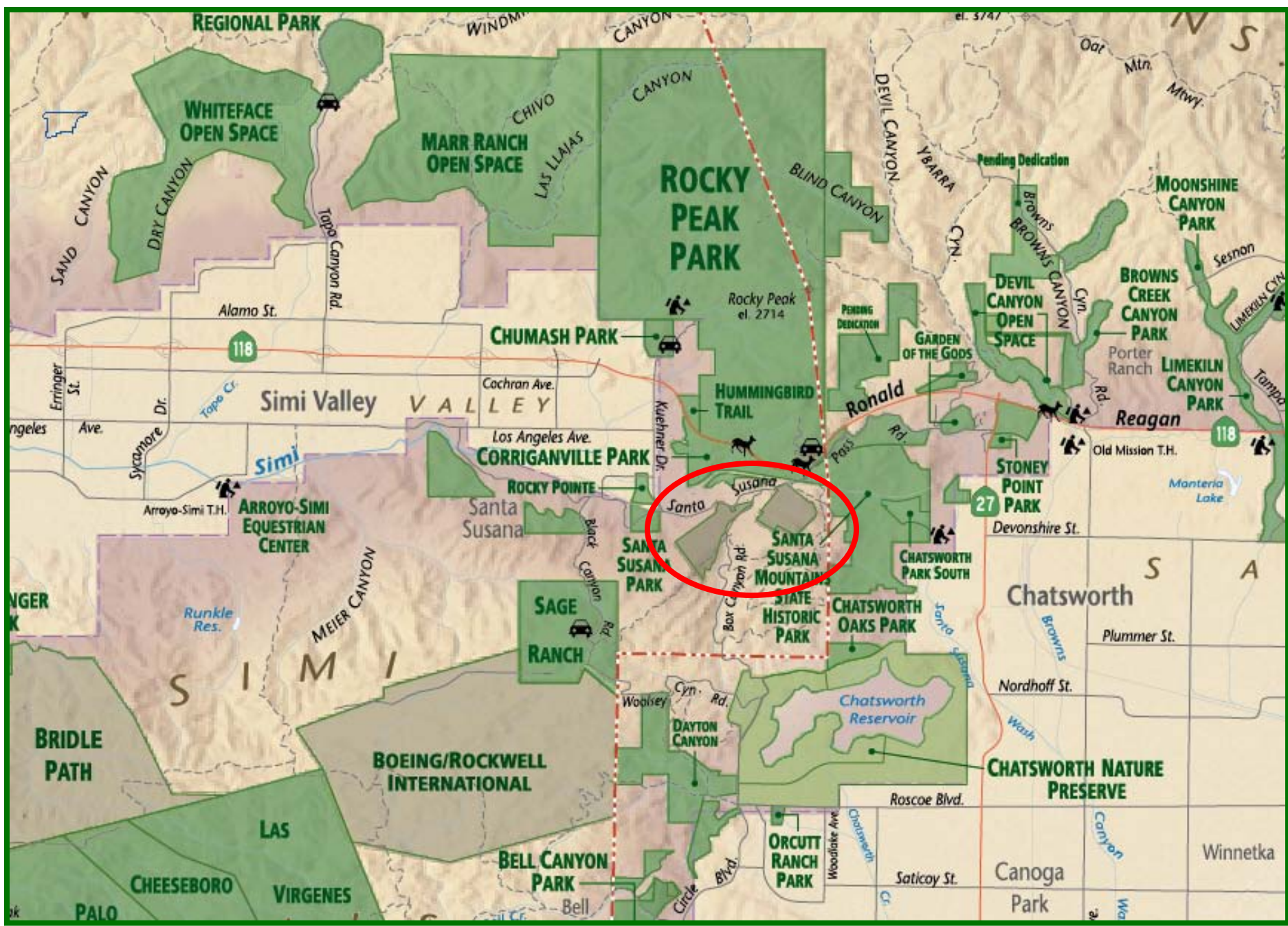
SANTA SUSANA MOUNTAINS

Alamos Canyon

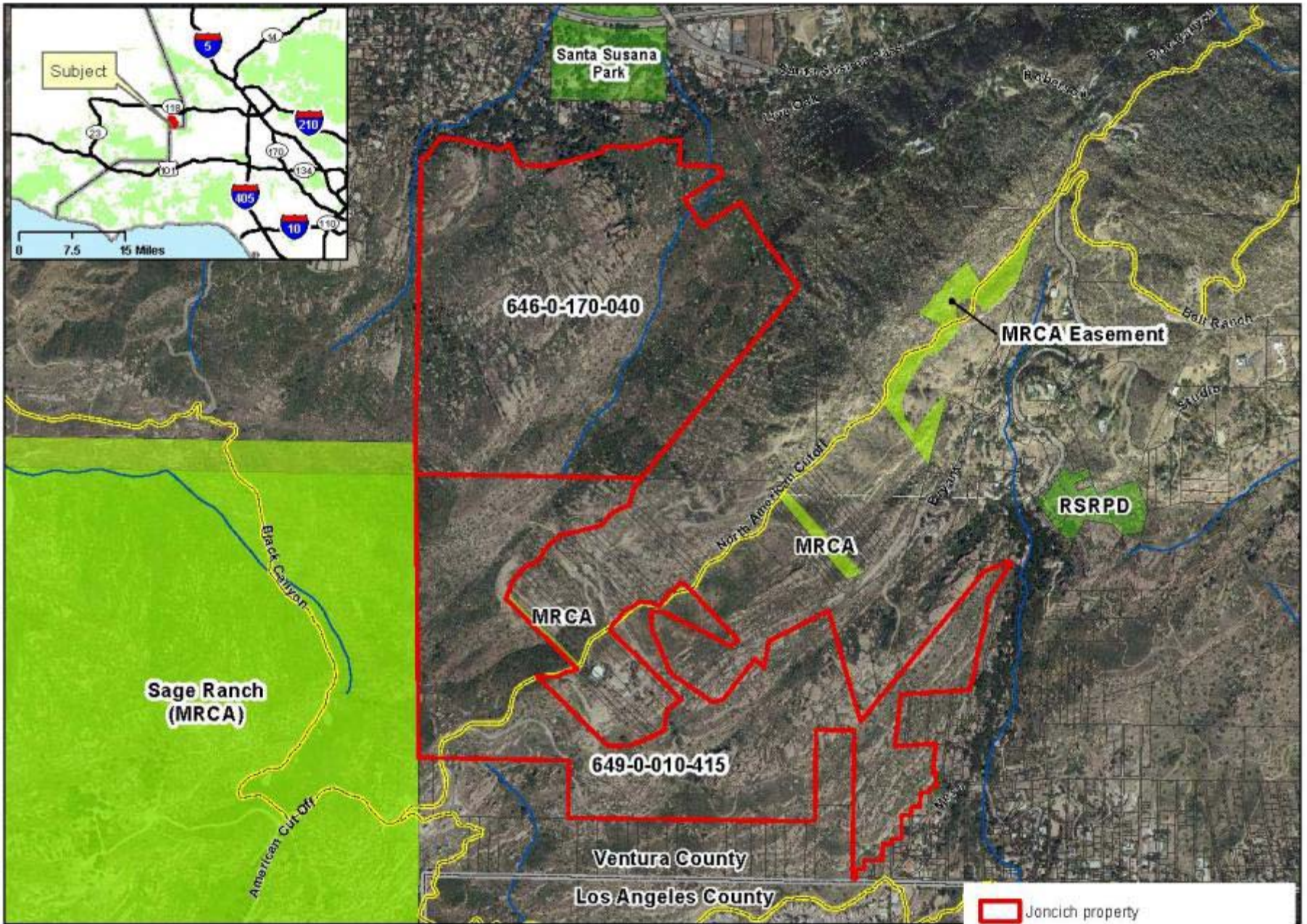
Santa Susana Pass

118

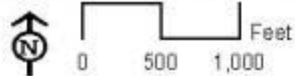
SIMI HILLS



Box Canyon



Joncich Property



- Joncich property
- Public Land
- Rim of the Valley Trail (spur concept)



Tunnel

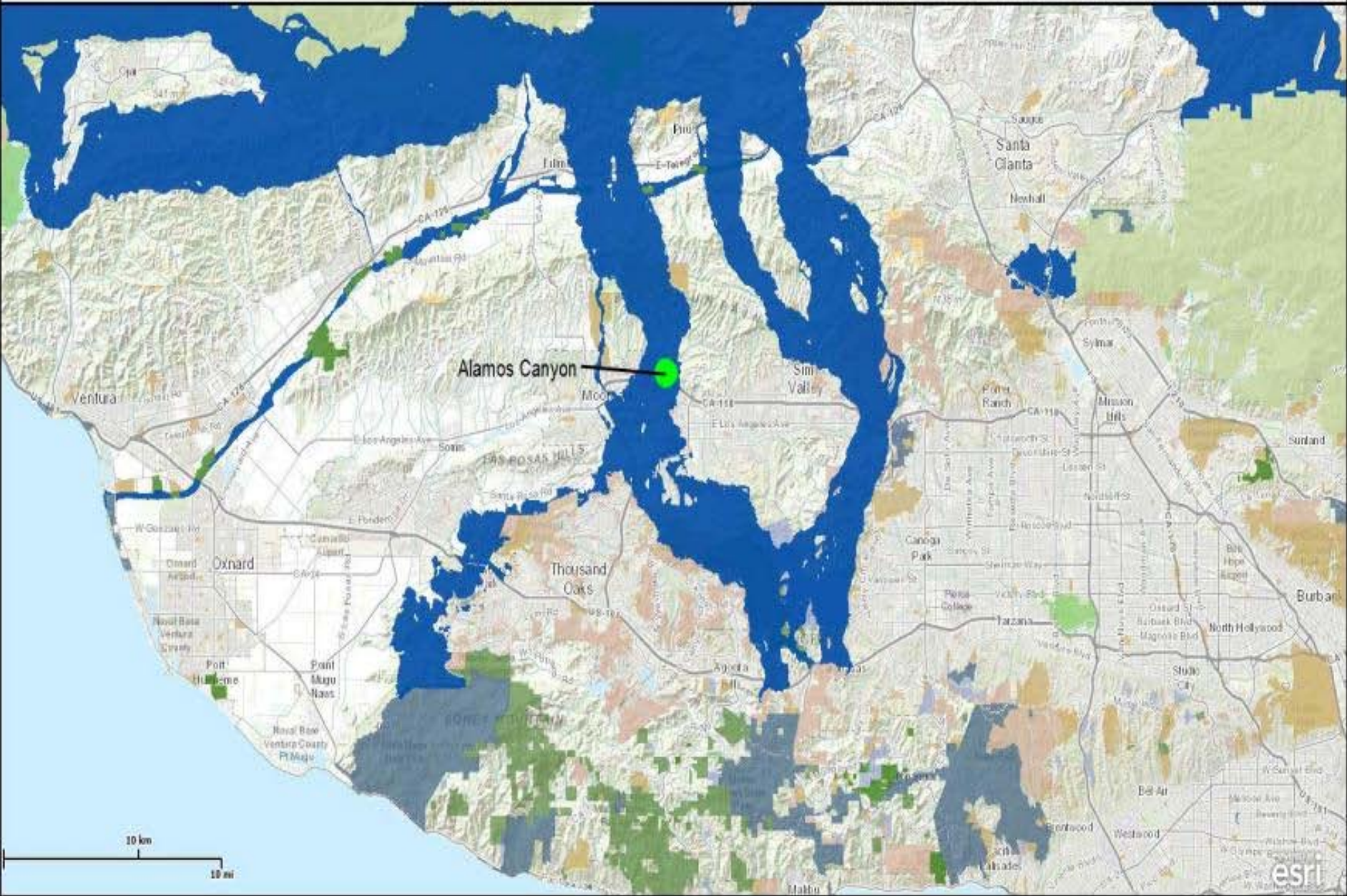


Interstate 405 HOV Land Over the Sepulveda Pass (I -10 to US - 101)



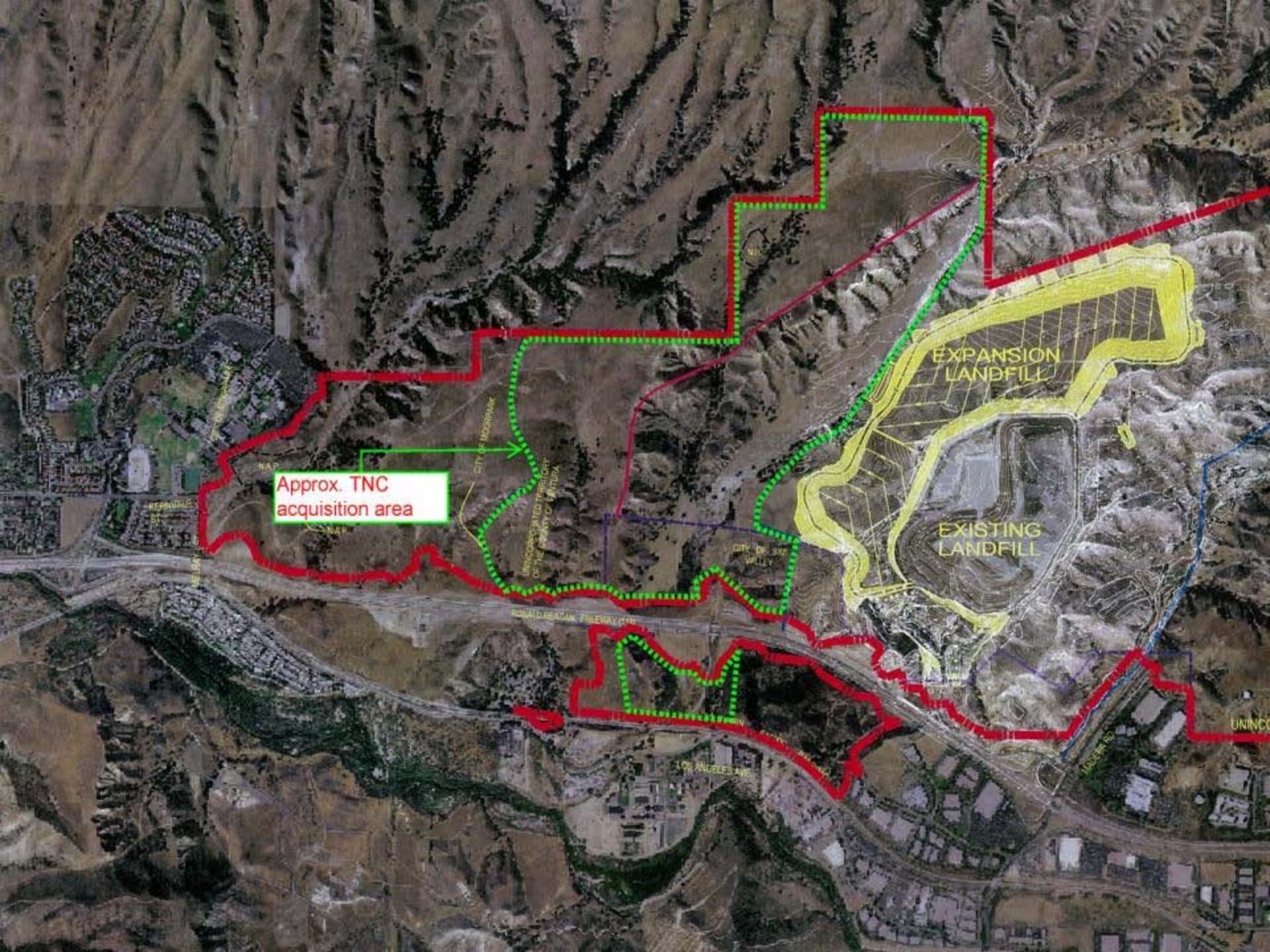
Waste Management - Alamos Canyon

Location relative to Wildlife Linkage and Protected Lands





Alamos Canyon 118 Freeway Undercrossing
Looking South



Approx. TNC acquisition area

EXPANSION LANDFILL

EXISTING LANDFILL

CITY OF INDEPENDENCE

UNINCORPORATED TERRITORY OF THE COUNTY OF INDIANA

CITY OF SAN WILLEY

ROSA LIZARDIAN FREEWAY (101)

LOS ANGELES AVE

MELBY ST

TEPANYA ST

MOSELEY ST

UNINCOR



OAK PARK

6' Box Culvert

LOS ANGELES AVE

Union Pacific Railroad

ALAMOS CANYON

City of Simi Valley
Open Space

QUIMISA

LOS ANGELES AVE

20' RSRPD Trail

60' Wildlife Corridor and Conservation Easement (CSE)

ARROYO SIMI

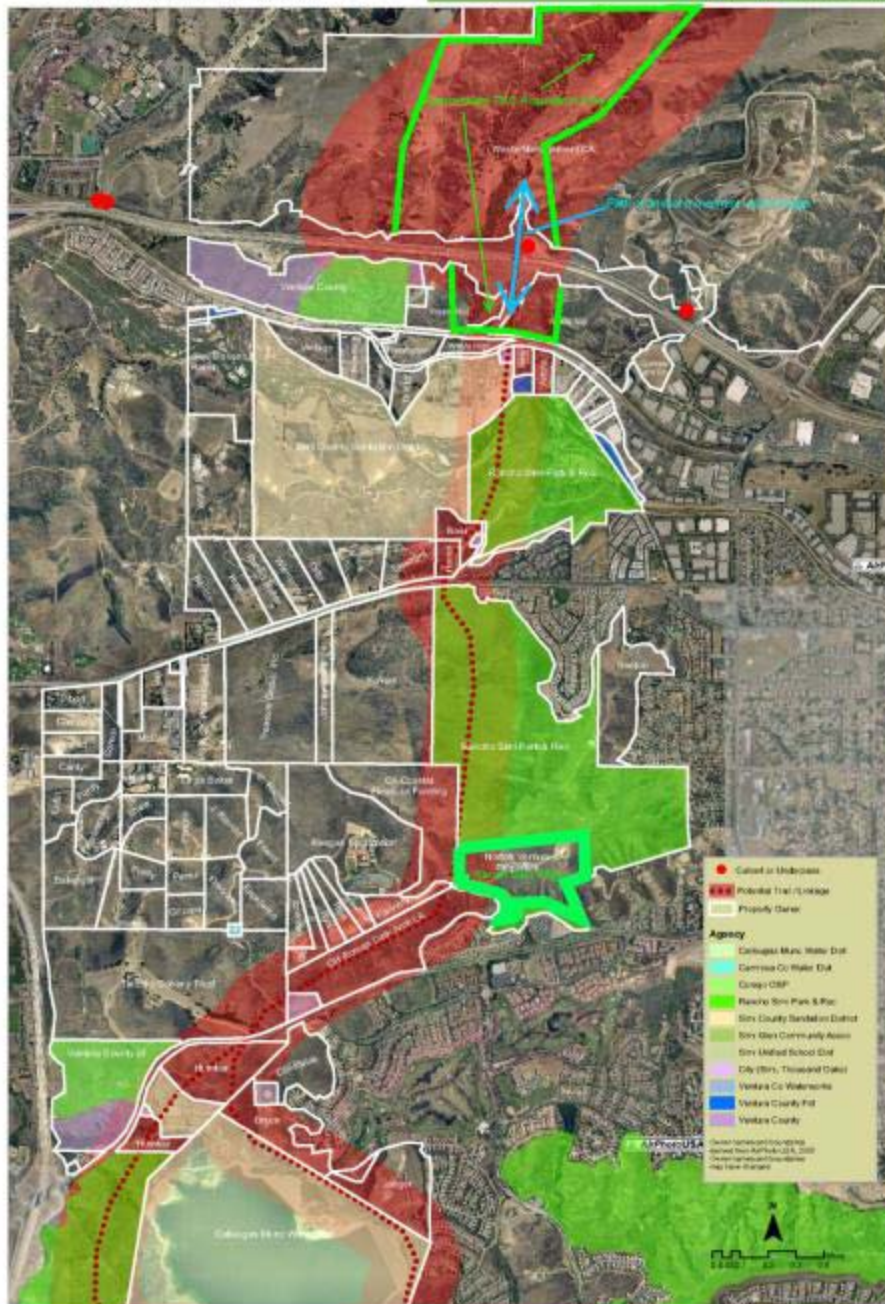
500-0-291-455
All Valleys RV

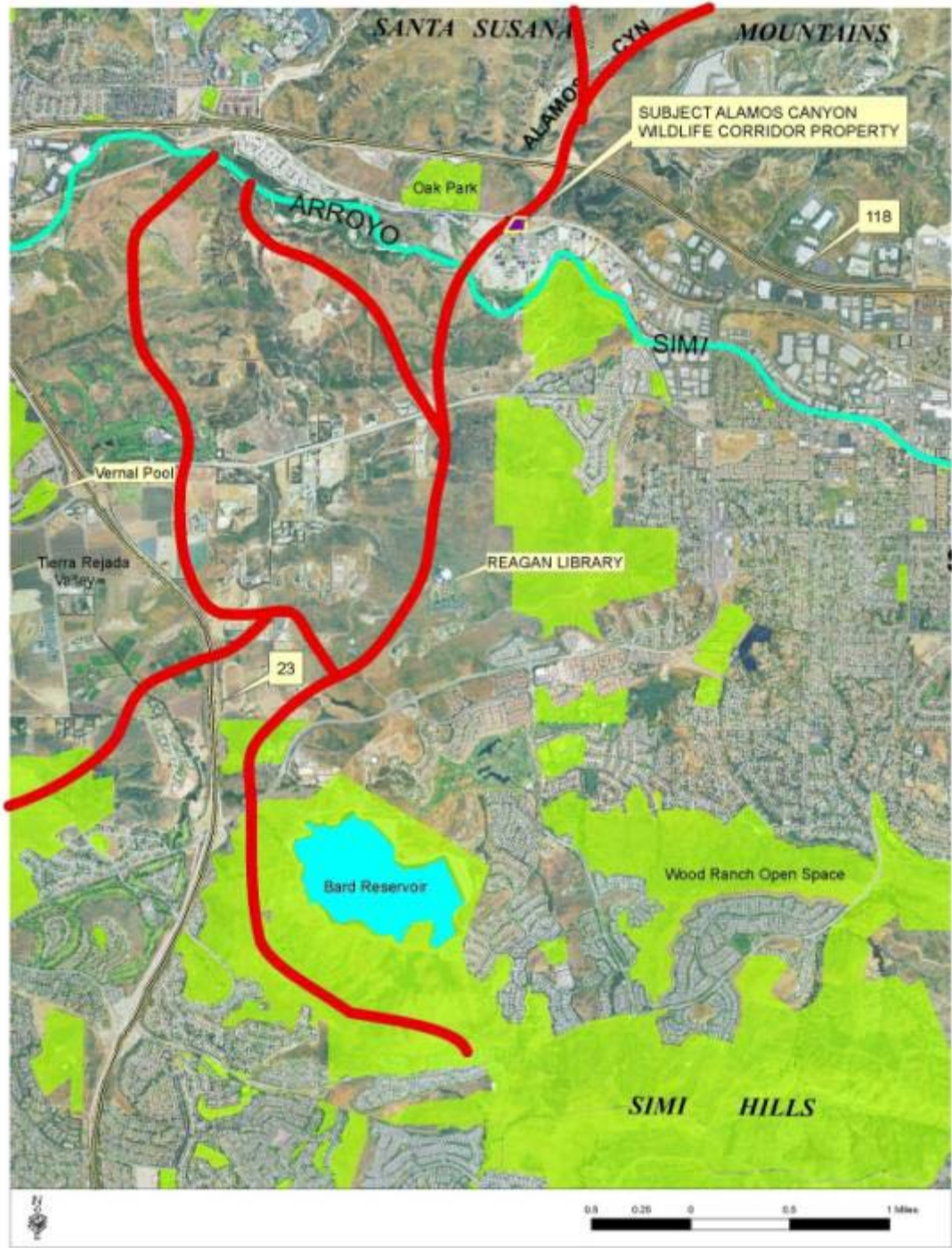
RSRPD Public Land

500-0-291-475

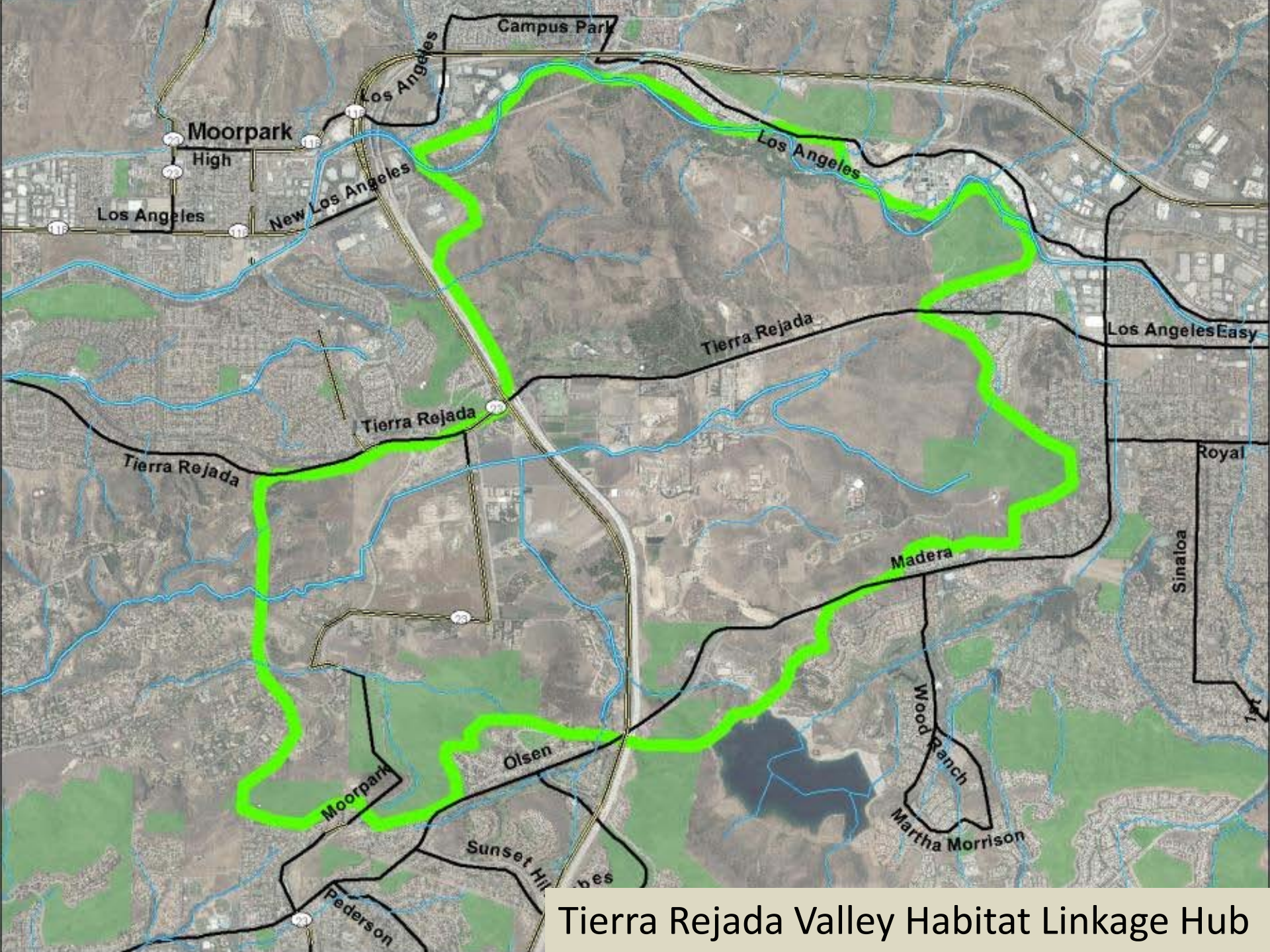
20' Buffer

Simi Valley
Sanitation District Property

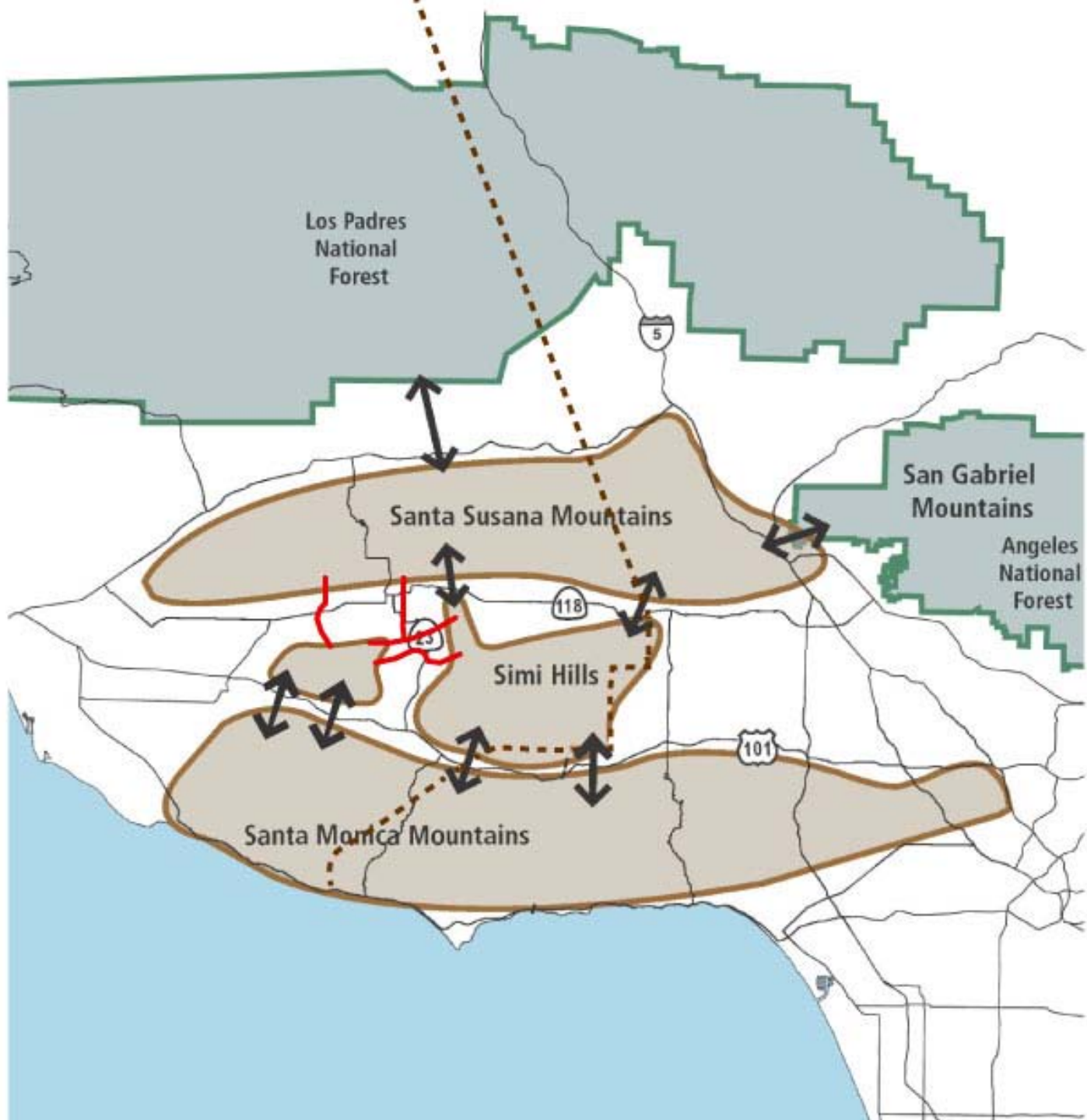








Tierra Rejada Valley Habitat Linkage Hub





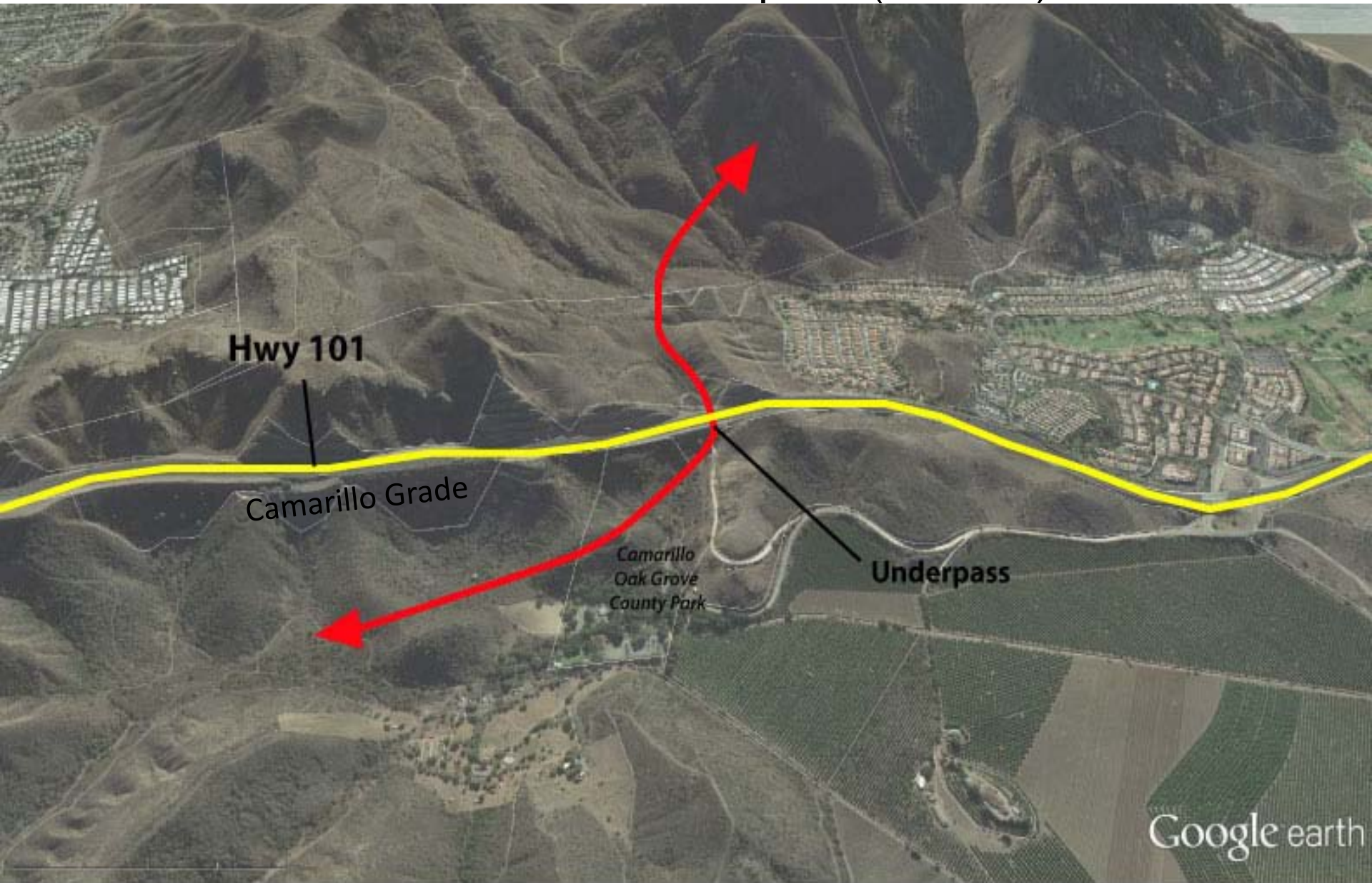
Extensive Remaining Habitat Linkages Surrounding Santa Rosa Valley
Looking South

Western end of Santa Monica Mountains and Las Posas Hills



Looking South

Camarillo Grade Underpass (Fenced)



Looking South



Conejo Creek Underpass
(at 101 Highway)

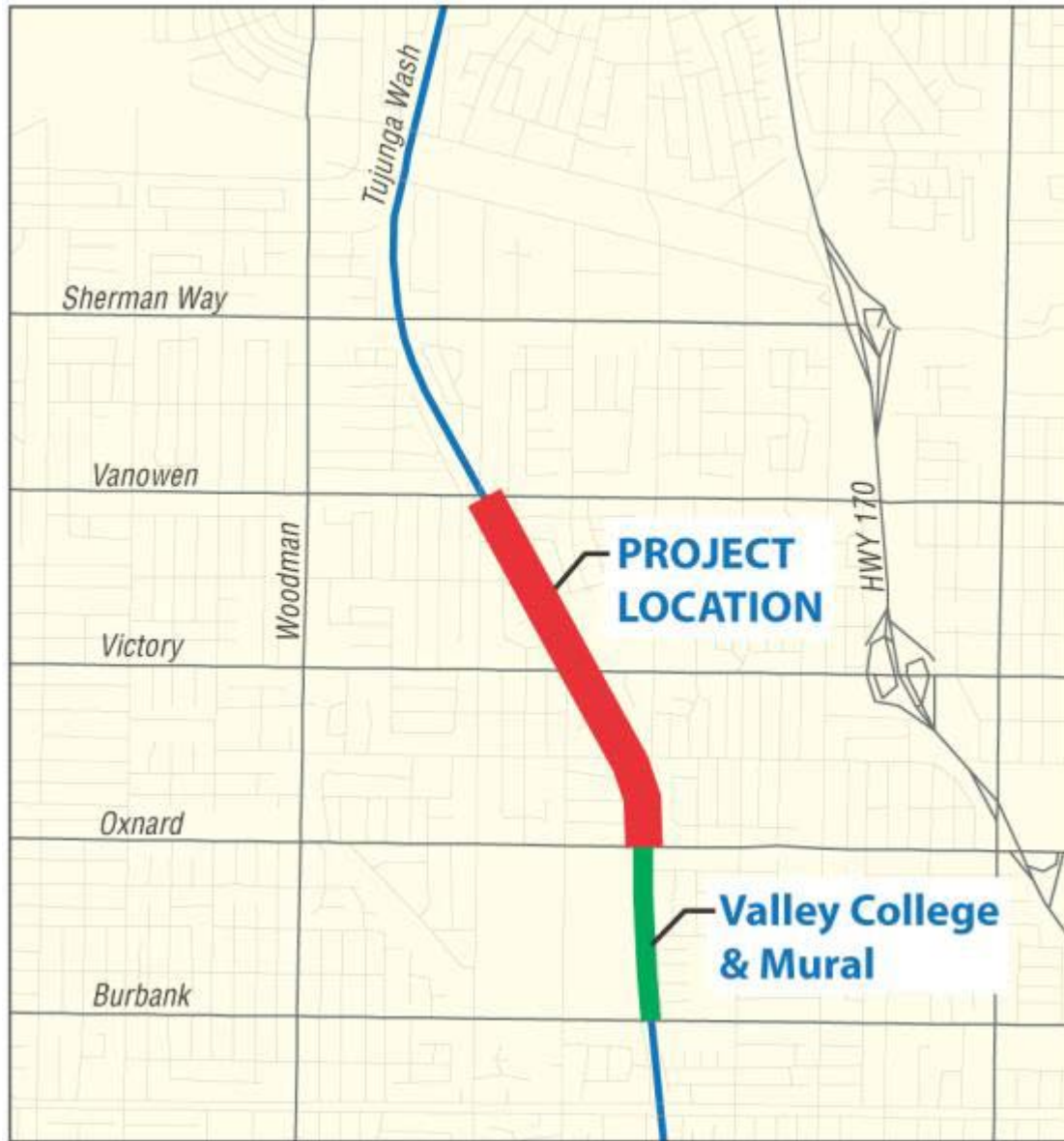
Calleguas Watershed- 118 Freeway / Kadota



Calleguas Watershed- 118 Freeway / Kadota



Tujunga Wash Greenway Project Location

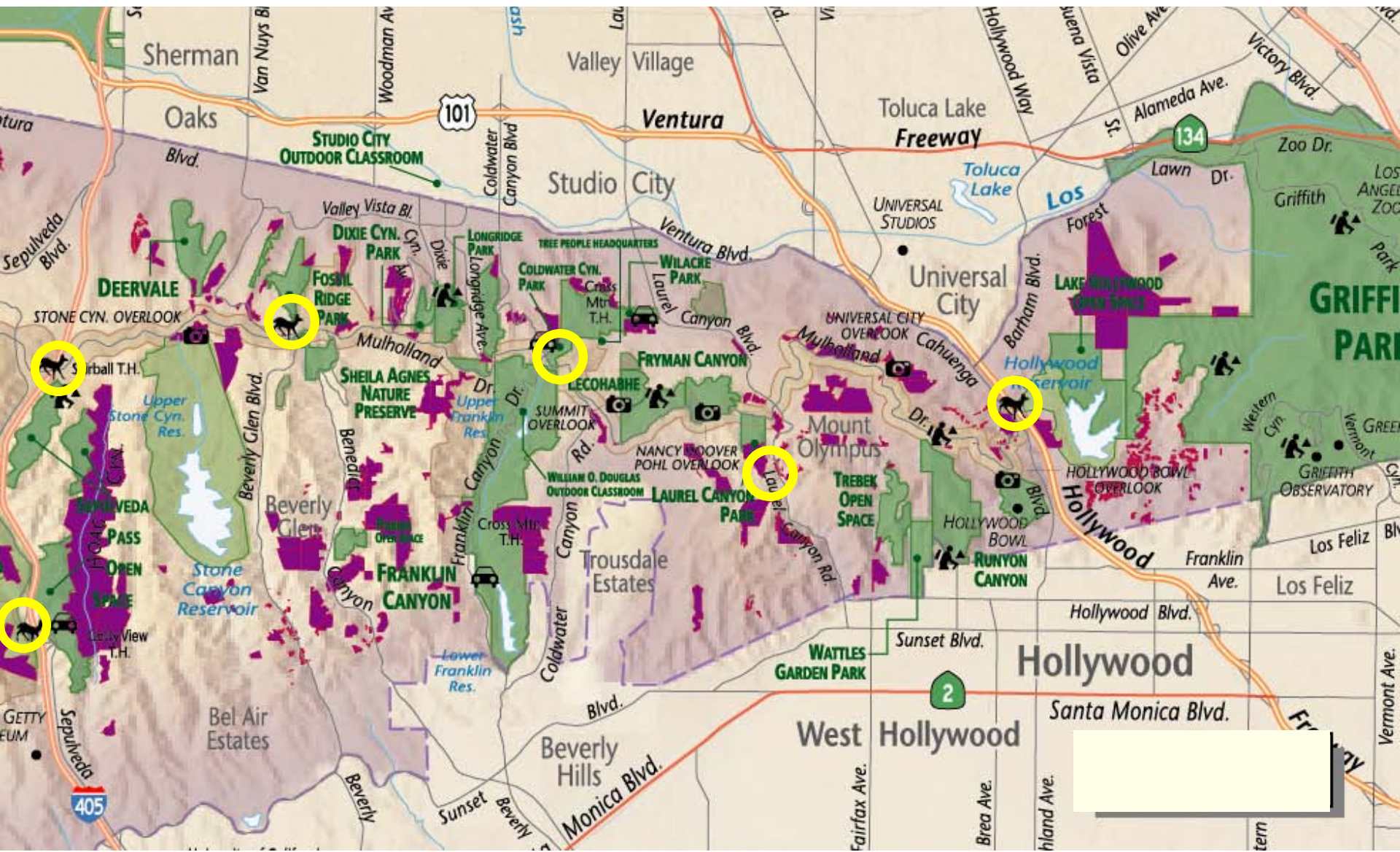












All known - and potential - habitat linkages and wildlife road crossing locations must be clearly defined in all General Plan documents as soon as possible.

MND and EIR analyses need exhaustive wildlife corridor analyses.

Co-locate with Trail Alignments in some cases if ecologically functional.

**Green or Natural
Open Space**

**Politician Approved
Extra Development**

By Right Entitlement

