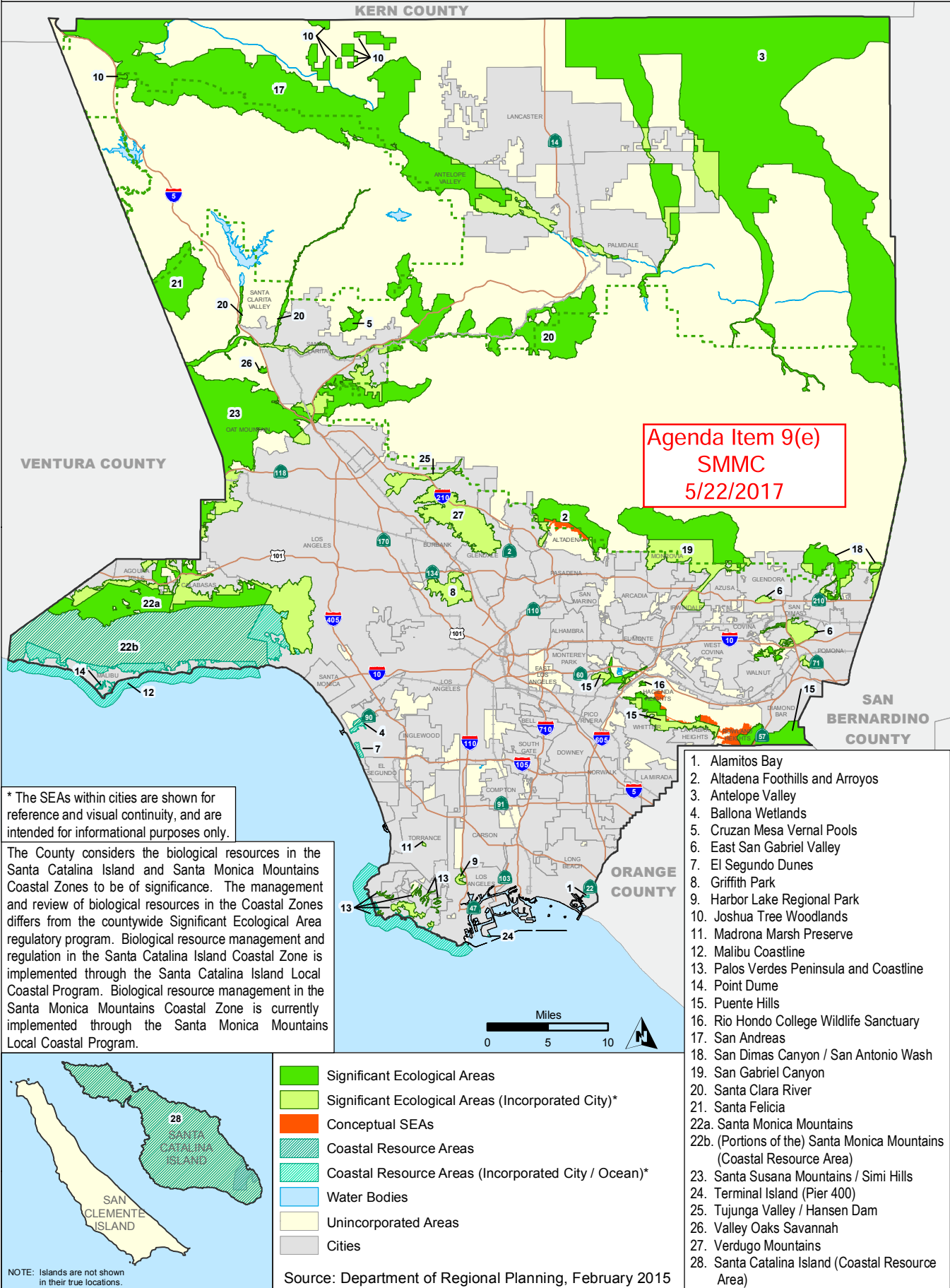


# Significant Ecological Areas and Coastal Resource Areas Policy Map

## Figure 9.3



Agenda Item 9(e)  
 SMMC  
 5/22/2017

\* The SEAs within cities are shown for reference and visual continuity, and are intended for informational purposes only.

The County considers the biological resources in the Santa Catalina Island and Santa Monica Mountains Coastal Zones to be of significance. The management and review of biological resources in the Coastal Zones differs from the countywide Significant Ecological Area regulatory program. Biological resource management and regulation in the Santa Catalina Island Coastal Zone is implemented through the Santa Catalina Island Local Coastal Program. Biological resource management in the Santa Monica Mountains Coastal Zone is currently implemented through the Santa Monica Mountains Local Coastal Program.

1. Alamitos Bay
2. Altadena Foothills and Arroyos
3. Antelope Valley
4. Ballona Wetlands
5. Cruzan Mesa Vernal Pools
6. East San Gabriel Valley
7. El Segundo Dunes
8. Griffith Park
9. Harbor Lake Regional Park
10. Joshua Tree Woodlands
11. Madrona Marsh Preserve
12. Malibu Coastline
13. Palos Verdes Peninsula and Coastline
14. Point Dume
15. Puente Hills
16. Rio Hondo College Wildlife Sanctuary
17. San Andreas
18. San Dimas Canyon / San Antonio Wash
19. San Gabriel Canyon
20. Santa Clara River
21. Santa Felicia
- 22a. Santa Monica Mountains
- 22b. (Portions of the) Santa Monica Mountains (Coastal Resource Area)
23. Santa Susana Mountains / Simi Hills
24. Terminal Island (Pier 400)
25. Tujunga Valley / Hansen Dam
26. Valley Oaks Savannah
27. Verdugo Mountains
28. Santa Catalina Island (Coastal Resource Area)

- Significant Ecological Areas
- Significant Ecological Areas (Incorporated City)\*
- Conceptual SEAs
- Coastal Resource Areas
- Coastal Resource Areas (Incorporated City / Ocean)\*
- Water Bodies
- Unincorporated Areas
- Cities



NOTE: Islands are not shown in their true locations.

Source: Department of Regional Planning, February 2015