



MOUNTAINS RECREATION & CONSERVATION AUTHORITY
Los Angeles River Center & Gardens
570 West Avenue Twenty-Six, Suite 100
Los Angeles, California 90065
Phone (323) 221-9944 Fax (323) 221-9934

November 30, 2018

Chairperson Craig Sap
c/o Rorie Skei, Chief Deputy Executive Director
Santa Monica Mountains Conservancy
26800 Mulholland Hwy
Calabasas, California 91302

**Proposition 1 Competitive Grant Application
Temescal Gateway Park Safety and Restoration Improvements**

Dear Chairperson Sap and Conservancy Members:

I am please to present the enclosed application for a grant for Temescal Gateway Park safety and restoration improvements. The Mountains Recreation and Conservation Authority (MRCA) request a grant in the sum of \$200,000 from the Water Quality, Supply, and Infrastructure Improvement Act of 2014 (Proposition 1). The MRCA's Governing Board will consider approval of this application on December 5, 2018. If approved, we will provide a signed resolution thereafter.

Please refer to the enclosed materials that describe the proposed grant and how it fits the Conservancy's Evaluation Criteria. If you have any questions regarding this, please contact me at (323) 221-9944, ext. 117.

Sincerely,

11/30/2018

X *Cara Meyer*

Cara Meyer
Deputy Executive Officer
Signed by: cmclane

Cara Meyer
Deputy Executive Officer

Grant Application

Print Form



The Natural Resources Agency

Project Title: Temescal GP Safety & Restoration Improv.

Date: 2018/11/30

Funds: Proposition 12

Amount: 200,000

Applicant Name: Mountains Recreation & Conservation Authority

Match amount: 0.00

Address: 570 West Avenue 26, Suite 100

Match source: n/a

State/Province: Los Angeles, CA

Total Project Cost: 200,000

Zip/Postal code: 90065

Phone: 323-221-9944

Brief Project Description: Improvements to structures and landscapes at Temescal Gateway Park to increase protection from wildfire and facilitate restoration.

Fax: 323-221-9934

Grantee's Authorized Representative: Cara Meyer, Deputy Executive Officer 323-221-9944, x117 cara.meyer@mrca.ca.gov

Name and Title

Phone Number

Email

Person with day-to-day responsibility: Ken Nelson, Chief of Fire Division ken.nelson@mrca.ca.gov

Name and Title

Phone Number

Email

Project Objective:

The proposed grant would be used for the planning and execution of improvements at Temescal Gateway Park to improve public safety, increase structure protection from natural disasters, and facilitate restoration. Work proposed includes removal and thinning of vulnerable vegetation, clearance of litter and debris around and on structures, clearing drainage ways and pipes, sealing of vents and building penetrations/openings, and adding water storage. The maintenance storage buildings will be evaluated and may be replaced depending on the feasibility of upgrades. The work will be concentrated in the developed areas of the park. See attached for details.

*Attach additional pages as necessary

Project Address: 15601 Sunset Blvd., Pacific Palisades CA 90272

Latitude: 34.0498268

Acreage: variable

Trail Length: N/A

Longitude: -118.5293992

APN's: 4422-027-900; 002-902

Stream Miles: N/A

Congressional District: 33

State Senate District: 26

Assembly District: 50

Tasks / Milestones:

Budget:

Completion Date:

See attached budget

*Attach additional pages as necessary

I certify that the information contained in this Grant Application form, including required attachments, is accurate.

Cara Meyer

Cara Meyer
cn=Cara Meyer, o=MRCA, ou,
email=cara.meyer@mrca.ca.gov, c=US
2018.11.30 15:00:35 -08'00'

Signature of Authorized Representative

Date

Proposition 1 Competitive Grant Application
Temescal Gateway Park Safety and Restoration Improvements
Mountains Recreation and Conservation Authority

The Mountains Recreation and Conservation Authority (MRCA) operates and manages Temescal Gateway Park (Temescal). Located in the Santa Monica Bay Watershed in the Pacific Palisades, Temescal is one of the most popular parks in the Santa Monica Mountains. The park encompasses 141 acres of oak and sycamore canyons, ridgetop views, and access to trails in Topanga State Park and Will Rogers State Historic Park. Thousands of people visit each year for hiking and other recreational activities.

The recent Woolsey Fire provides a clear picture of how a wildfire in the Santa Monica Mountains is likely to progress and what types of built facilities are most vulnerable. Buildings in close proximity to each other, such as in Temescal Gateway Park, make for a situation that can be difficult for firefighters to control. Woodlands and forests that are stressed after continued years of drought and various pests also present a challenge when they contain significant amounts of combustible dead wood and litter. During a conflagration, firefighting resources are highly likely to be stretched thinly and/or concentrating their efforts in areas outside of natural parkland. Given that the weather and ignition conditions which contributed to the Woolsey Fire are likely to occur again this season, it is imperative that capital improvements targeted toward protecting and restoring the resources of Temescal Gateway Park commence immediately.

The proposed \$200,000 grant would be used to plan and implement improvements to improve public safety, increase structure protection from natural disasters, and facilitate restoration. Work proposed includes removal and thinning of vulnerable vegetation, clearance of litter and debris around and on structures, clearing drainage ways and pipes, sealing of vents and building penetrations/openings, and adding water storage. The maintenance storage buildings will be evaluated and may be replaced depending on the feasibility of upgrades. The work will be concentrated in the developed areas of the park and focused on a goal of structure protection.

Although the scope includes activities other than vegetation management, this grant is submitted in the Vegetation Management because the intent fits best within that category: *Projects to reduce hazard fuels to reduce wildfire risks and protect watersheds and promote watershed health.*

Structures within the property that could be vulnerable to natural disasters include the classrooms, administration offices, restrooms, Elizabeth A. Cheadle Hall, staff residences, maintenance storage buildings, Stewart Hall, bungalows, cabins, dormitories, and the former pool house. Infrastructure elements that could be vulnerable include culverts, roads, various drainages, utilities, water tanks and storage, and trees within the park's forest that are undergoing stress from continued drought. While fire may still occur on the property after the work is complete, the proposed improvements will improve firefighters' ability to defend structures and other resources.

Materials will be chosen to minimize future maintenance costs where possible. The requested grant would fund project planning and design and construction of improvements. Work will be accomplished by a combination of MRCA staff and

Proposition 1 Competitive Grant Application
Temescal Gateway Park Safety and Restoration Improvements
Mountains Recreation and Conservation Authority

subcontractors.

Proposition 1 and the California Water Action Plan (Water Action Plan) outline priorities and strategies to help protect our developed and natural resources from prolonged drought and to establish a water conservation ethic. The proposed project aims to protect developed and natural resources in Temescal from wildfire, with a secondary benefit of helping to achieve greenhouse gas reduction targets. This wildfire prevention effort will help protect plant and animal species and their fragmented habitat found in urban and open space areas of Southern California. This project will result in the restoration and protection of resources within the park.

The objective of the vegetation management work is to reduce the amount of available fuel and create a defensible space to keep developed structures and other resources protected from fire.

Steep hillsides, such as those found in Temescal Canyon, require protection from erosion. Reducing wildfire risk, which in turn reduces erosion risk, provides multiple direct and indirect benefits including reducing sediment, ash, and organic matter from entering streams that drain into our watersheds, thereby limiting creek sedimentation and erosion and encouraging ground water recharge.

The proposed improvements will support ongoing public safety efforts at Temescal. Additionally, the work will protect the continued use and enjoyment of the park by the public. These management efforts avoid future emergency responses associated with higher costs than the proposed preventive measures.

Trees under stress due to the current long-term drought are more susceptible to pests and disease that can kill a previously healthy tree. At Temescal, these tend to be very mature, large trees. The removal of these trees is extremely costly due to the size and proximity to other resources. Removal is a necessary forestry management task due to the risks of infestation of other nearby trees, injury to people and property caused by weakened roots, and fire hazard.

California's efforts to meet goals mandated by the Global Warming Solutions Act ("AB 32") to reduce greenhouse gas emissions to 1990 levels by the year 2020 assumed no net emissions for wildland ecosystems by 2020, underestimating the potential of wildfires as a considerable greenhouse gas source. Current findings are showing that burned, or dead, vegetation releases carbon into the atmosphere as net emitters and not the carbon sinks we rely on them to be, further exacerbating climate change and its impacts.¹ Events such as the Woolsey Fire that are stronger, more damaging, and compounded by current drought conditions underscore the need to perform vegetation management.

¹ Gonzales, P. et.al. (2015) "Aboveground live carbon stock changes of California wildland ecosystems, 2001–2010", *Forest Ecology and Management, Volume 348, p68*

Proposition 1 Competitive Grant Application
Temescal Gateway Park Safety and Restoration Improvements
Mountains Recreation and Conservation Authority

Protection and restoration activities covered under this grant application will be performed by MRCA staff as well as outside contractors. Contractors are used where it is more cost efficient, or where it is necessary for timing. The funds will also be directed to capital improvements to structures within Temescal, which will result in greater longevity and usability to the structures, in addition to making them more defensible. Monitoring and reporting on the progress and effectiveness of the project will occur via written project status reports. After the project's completion, photographs will be provided upon request.

BUDGET

See attached budget. No matching funds are available for this project.

TIMELINE

The proposed project will be completed approximately 1 year after approval. Timeline may vary depending on weather events, and other factors outside of MRCA's control.

RESPONSE TO EVALUATION CRITERIA

Project achieves the purposes of Proposition 1 per Water Code Section 79732(a).

The proposed project will involve the protection and restoration of natural and developed resources by reducing flash fuel vegetation and making structures within Temescal more defensible. The proposed grant achieves the following Prop 1 purposes:

- 1) Protect and increase the economic benefits arising from healthy watersheds, fishery resources, and instream flow. Completion of this project will reduce the destructive potential of future fires, and associated high-cost emergency responses. Improvements to the property will reduce operational costs and protect the enterprise activities that occur at Temescal. Protection of the structures reduces the possibility of their loss, and consequent rebuilding expenses.
- 2) Implement watershed adaptation projects in order to reduce the impacts of climate change on California's communities and ecosystems. The removal of hazardous flash fuel vegetation, and actions to make structures more defensible, directly reduces wildfire risk. Such preventative efforts help to mitigate the release of carbon emissions that would otherwise exacerbate climate change.
- 8) Implement fuel treatment projects to reduce wildfire risks, protect watersheds tributary to water storage facilities, and promote watershed health. A portion of the proposed work is fuel treatment. The intent of the project is wildfire prevention project that will thereby help to protect watersheds and promote watershed health.
- 9) Protect and restore rural and urban watershed health to improve watershed storage capacity, forest health, protection of life and property, stormwater resource management, and greenhouse gas reduction. The reduction of flash fuels and drought-stricken trees

Proposition 1 Competitive Grant Application
Temescal Gateway Park Safety and Restoration Improvements
Mountains Recreation and Conservation Authority

will directly reduce wildfire risks, protect watersheds, protect habitats, improve air quality, and promote overall urban watershed health. The work is intended to provide public safety improvements that protect the property.

- 11) Reduce pollution or contamination of rivers, lakes, streams, or coastal waters, prevent and remediate mercury contamination from legacy mines, and protect or restore natural system functions that contribute to water supply, water quality, or flood management. Actions under the proposed project will reduce sediment, ash, and organic matter that would otherwise run off compromised soils with a large potential to fill the local water supply, and contaminate Temescal's coastal stream drainage. This in turn limits erosion and creek sedimentation and encourages ground water recharge.
- 12) Assist in the recovery of endangered, threatened, or migratory species by improving watershed health, instream flows, fish passage, coastal or inland wetland restoration, or other means, such as natural community conservation plan and habitat conservation plan implementation. Wildfire prevention directly helps to protect plant and animal species and their habitats found in fragmented urban interface and open space areas.

The project will provide multiple benefits related to water quality, water supply and/or watershed protection and restoration.

The proposed work will benefit the water quality and watershed health of Temescal Canyon. The activities will reduce the potential of sediment, ash, and organic matter from entering the Temescal Creek, and promote groundwater recharge.

The project results in restoration or protection of important species and habitat pursuant to the California Water Action Plan.

As mentioned, wildfire prevention and erosion control efforts, such as the proposed project, protect the plant and animal species and their habitats found in Temescal Canyon, Topanga State Park, and other nearby public lands.

The project employs new or innovative technology or practices, including decision support tools that support the integration of multiple jurisdictions, including, but not limited to, water supply, flood control, land use, and sanitation.

The project is a proactive approach to fortify one of Southern California's most popular parks from wildfire damage. As an immediate response to the destruction of the Woolsey Fire, the project takes advantage of our firefighters' first hand experience defending structures in other areas of the Santa Monica Mountains and Simi Hills. The ability to have front line responders actively involved in protection work is uncommon and is an innovative use of our resources.

Applicant has proven that implementation of the project is feasible.

The MRCA staff has many years of experience and expertise to undertake these tasks.

Applicant has financial capacity to perform project on a reimbursable basis.

MRCA has the financial capacity to perform this project on a reimbursable basis. MRCA

Proposition 1 Competitive Grant Application
Temescal Gateway Park Safety and Restoration Improvements
Mountains Recreation and Conservation Authority

has been implementing capital projects on a reimbursable basis for many years and anticipates reimbursable payments in our budgets. MRCA also maintains a line of credit that can be drawn upon in the event of an extended delay.

Applicant, or active project partner, has successfully completed multiple projects of similar size and scope.

MRCA has an in-house Fire Division of full-time staff and seasonal employees who have been eliminating flash fuels and invasive nonnatives on MRCA-managed properties since the agency was founded in 1985. Staff also makes use of outside contractors to increase efficiency during busy growing seasons. MRCA's Construction Division staff similarly has decades of experience implementing improvement projects.

The project is a partnership between two or more organizations and each organization has committed to contributing toward project implementation.

MRCA is a local public agency exercising joint powers of the Santa Monica Mountains Conservancy, the Conejo Recreation & Park District, and the Rancho Simi Recreation & Park District pursuant to Section 6500 *et seq.* of the Government Code. These three entities each have a voting member on MRCA's Governing Board, which will consider the proposed grant application on December 5, 2018.

Completion of the project would assist a government agency in fulfilling a water resources protection, watershed ecosystem restoration, or multi-benefit river parkway plan.

The MRCA is a local government agency with the responsibility to protect and manage both the lands it owns and those owned by the Santa Monica Mountains Conservancy. The management of vegetation within Temescal fulfills the goals of watershed ecosystem restoration. The *Santa Monica Mountains Comprehensive Plan*, a resource protection plan, recommended use of Temescal's conference area for recreational uses. The proposed project helps to carry out that recommendation.

Applicant, or project partner, has 1+ years experience maintaining and operating projects of similar size and scope.

The MRCA has been managing Temescal Gateway Park since the land was put into public ownership in 1994. MRCA staff has been performing fuel hazard reduction and vegetation management, and construction and improvement projects on an ongoing basis since the agency's inception in 1985.

Applicant has identified maintenance funding for at least 2 years after completion.

MRCA will continue to provide maintenance of Temescal Gateway Park funded by enterprise and restricted sources.

The project substantially restores a site by reestablishment of native species to reduce wildfire risk and promote watershed health.

Vegetation management through fuel hazard reduction and removal of nonnative species promotes the re-establishment of native species. Removing failing trees will help other

Proposition 1 Competitive Grant Application
Temescal Gateway Park Safety and Restoration Improvements
Mountains Recreation and Conservation Authority

plants thrive, ensuring a healthier watershed.

The project upgrades an existing regional trail or river parkway to protect its continued use and enjoyment by the public.

Trails at Temescal connect with the regional trail system of Topanga State Park and other public lands of the Santa Monica Mountains. Wildfire prevention protects the continued use and enjoyment of these regional trails, and prevents damage to public resources.

The project includes improvements that would significantly reduce the amount of untreated runoff entering urban rivers, waterways, or coastal watersheds.

Erosion and watershed protection are also accomplished by the prevention of wildfires. The proposed work therefore will serve to reduce the potential of sediment, ash, and organic matter loading of the streams in this coastal watershed.

The project includes improvements that would improve or support regeneration of important native vegetative cover on slopes near a stream or river, which if substantially disturbed may contribute to flood, erosion, creek sedimentation, or reduced groundwater recharge.

A portion of the work proposed will occur on slopes and existing structures near the Temescal creek, on soil that would be prone to erosion without proper vegetative cover. The removal of invasive exotic species will help native vegetation thrive. By preventing wildfire, the proposed grant will also prevent the erosion of sediment, ash, and organic matter into streams.

The project implements public safety practices by reducing wildfire risk.

The primary goal of the proposed grant is to reduce wildfire risk. The protection and restoration of both natural and developed resources supports ongoing public safety efforts. Managing vegetation within Temescal protects its continued use and enjoyment by the public. The crews that will implement the project have regular safety trainings and briefings.

The project implements fuel treatment projects to reduce wildfire risks, protect watersheds tributary to water storage facilities, and promote watershed health.

The proposed grant includes fuel treatment work that will accomplish the stated goals. Benefits will accrue to the watershed in general, and to downstream lands.

The project substantially restores a site by removal of exotic species to reduce wildfire risk and promote watershed health.

The proposed project includes the removal of exotic species to reduce wildfire risk and protect watershed health.

Applicant has conducted outreach to the affected communities.

MRCA staff maintains relationships with local community groups, homeowners associations, and other stakeholders to keep affected communities aware of the vegetation management activities. Posted signs provide contact information for the

Proposition 1 Competitive Grant Application
Temescal Gateway Park Safety and Restoration Improvements
Mountains Recreation and Conservation Authority

public. Reports on land affected by the Woolsey Fire have been given at publicly-noticed Governing Board meetings.

The project adds visitor-serving amenities, accessibility, and public safety improvements to public parkland with multiple ecosystem benefits.

The proposed project is targeted to achieve public safety improvements at Temescal Gateway Park. No new amenities will be added, but Temescal's extensive features will be protected and restored.

Project will benefit specially protected species pursuant to the California Wildlife Protection Act of 1990.

In June of 1990 voters of California approved Proposition 117, the California Wildlife Protection Act, prohibiting the sport hunting of the California Mountain Lion and declaring them to be a specially protected species. The local population of mountain lions requires large areas of undisturbed habitat to thrive. Vegetation management reduces the possibility of the destruction of this habitat due to wildfire or erosion, benefiting the Mountain Lion population.

Project has approval from all landowners to complete the project, or Applicant is the landowner.

The vegetation management project will be performed on land managed by MRCA.

The project demonstrates a reduction in baseline greenhouse gas emissions through carbon sequestration or other innovative techniques or project designs, such as diverting organic material from landfills.

The prevention of fire retains the CO₂ emissions within the carbon sinks of plant material and prevents their release in atmospheric concentrations. In turn, healthy trees aid in reducing Greenhouse Gas (GHG) emissions through carbon sequestration helping to provide clean air for California's residents and helping with the adverse impacts of global warming. Refer to Appendix A for carbon emissions calculations.

The entirety of Temescal Gateway Park is 141 acres. although it is impossible to predict exactly which areas and structures may burn, for calculation purposes, it is assumed that 10% of the park's footprint (14 acres) will be affected.

The proposed project will prevent an approximated 980 metric tons of CO₂ from being released into the atmosphere due to wildfire. Refer to Appendix A for carbon emissions calculations.

The project acquires, preserves, or restores natural areas at risk of development and quantifiably avoids emissions associated with development.

The project work will be conducted on land not designated for development, therefore limiting development-related emissions and preserving, protecting and maintaining healthy open space by reducing wildfire risk.

Proposition 1 Competitive Grant Application
Temescal Gateway Park Safety and Restoration Improvements
Mountains Recreation and Conservation Authority

The project contributes to tree canopy cover and/or greenways in urban areas to mitigate heat island effects and promote public health and recreation.

Temescal Gateway Park is located within the urban metropolis of Los Angeles. The project will benefit tree canopy health by removing invasive competition species, ensuring the ongoing public health benefits contributed by those trees. Additionally, through its protection of drought-tolerant California native trees and shrubs, the project will protect and create additional habitat for local wildlife; ensure public enjoyment of this wildlife and habitat; provide shade to reduce Urban Heat Island effects; promote infiltration; generate oxygen; and sequester carbon and remove pollutants from the air thus helping to further promote and allow for public health and recreation.

The project acquires and/or maintains wildlife corridors and linkages to provide connections between areas of undeveloped lands, particularly significant public lands and key habitat ecosystems.

The area affected by the proposed grant connects to major and minor wildlife corridors that will benefit from the reduction of wildfire risk.

The project develops or maintains multi-use trails that connect communities, provides access to public resources and reduces vehicle miles traveled.

The proposed project will benefit regional multi-use trails by reducing the risk of wildfire and erosion. These trails provide access to public lands.

The project engages local communities through outreach, education, and interpretation regarding long-term stewardship and climate change awareness.

MRCA staff maintain relationships with local community groups, homeowners associations, and other stakeholders to keep affected communities aware of our activities. Posted signs provide contact information for the public.

Project utilizes a local job training entity for a portion of the work.

MRCA recruits staff for the Fire Division from a variety of sources, including job training entities such as the Los Angeles Conservation Corps and training programs such as the Rio Hondo Fire Academy. A portion of work will be conducted by contractors selected through a competitive bid process, and job training programs are eligible to bid.

Proposition 1 Competitive Grant Application
Temescal Gateway Park Safety and Restoration Improvements
Mountains Recreation and Conservation Authority

Appendix A: Carbon Emissions Calculations

$$\text{CO}_2 \text{ emissions} = A_{\text{burned}} \times C_{\text{density}} \times f_{\text{combustion}} \times 3.66$$

CO₂ emissions = Carbon Dioxide emissions from Forest Fires

A_{burned} = Area burned in hectares (ha)

C_{density} = Carbon density in tons of Carbon per hectare in Tier 2 (105 tC/ht)

f_{combustion} = combustion factor (0.45)

3.66 = Carbon to Carbon Dioxide conversion (44/12)

RATIO = 70.01 metric ton of carbon dioxide per acre burned

Source: <http://www3.epa.gov/ttn/chief/firesummit/Flugge.pdf>

Referencing IPCC 2003 and IPCC 2006

Estimate of 14 acres (1/10 of Temescal Gateway Park's 141 acres) protected.

14 acres = 5.67 ha

CO₂ emissions = 5.67 ha x 105 tC/ht x 0.45 x 3.66 = **980 metric tons of CO₂ emissions prevented**

**Budget for Grant Application
Temescal Gateway Park Safety and Restoration Improvements**

Grant Request: \$ 200,000

Budget Item		Amount
A. MRCA Staff		
various	Direct Salaries, Payroll Tax, Benefits & Allocations	\$ 40,000
9998, 9999	Administrative Cost	\$ 55,000
SUBTOTAL A, MRCA Staff:		\$ 95,000
B. Materials and Supplies		
5112	Land & Building Improvement - Materials	\$ 5,000
5113	Land & Building Improvement - Equipment	\$ 5,000
7777	Equipment Allocation	
SUBTOTAL B, Materials and Supplies:		\$ 10,000
C. Consultants and Contractors		
5114	Land & Building Improvement - Subcontractors	\$ 90,000
5116	Land & Building Improvement - Other	\$ 5,000
SUBTOTAL C, Consultants and Contractors:		\$ 95,000
Grand Total (A+B+C):		\$ 200,000



MOUNTAINS RECREATION & CONSERVATION AUTHORITY

Los Angeles River Center & Gardens
570 West Avenue Twenty-Six, Suite 100
Los Angeles, California 90065
Phone (323) 221-9944 Fax (323) 221-9934

SMMC
Attachment
December 10, 2018
Agenda Item 16

November 30, 2018

Chairperson Craig Sap
c/o Rorie Skei, Chief Deputy Executive Director
Santa Monica Mountains Conservancy
26800 Mulholland Hwy
Calabasas, California 91302

**Proposition 1 Competitive Grant Application
Temescal Gateway Park Safety and Restoration Improvements**

Dear Chairperson Sap and Conservancy Members:

I am please to present the enclosed application for a grant for Temescal Gateway Park safety and restoration improvements. The Mountains Recreation and Conservation Authority (MRCA) request a grant in the sum of \$200,000 from the Water Quality, Supply, and Infrastructure Improvement Act of 2014 (Proposition 1). The MRCA's Governing Board will consider approval of this application on December 5, 2018. If approved, we will provide a signed resolution thereafter.

Please refer to the enclosed materials that describe the proposed grant and how it fits the Conservancy's Evaluation Criteria. If you have any questions regarding this, please contact me at (323) 221-9944, ext. 117.

Sincerely,

11/30/2018

X *Cara Meyer*

Cara Meyer
Deputy Executive Officer
Signed by: cmclane

Cara Meyer
Deputy Executive Officer

Grant Application

Print Form



Project Title: Temescal GP Safety & Restoration Improv. **Date:** 2018/11/30

Funds: Proposition 12 **Amount:** 200,000

Applicant Name: Mountains Recreation & Conservation Authority **Match amount:** 0.00

Address: 570 West Avenue 26, Suite 100 **Match source:** n/a

State/Province: Los Angeles, CA **Total Project Cost:** 200,000

Zip/Postal code: 90065

Phone: 323-221-9944 **Brief Project Description:** Improvements to structures and landscapes at Temescal Gateway Park to increase protection from wildfire and facilitate restoration.

Fax: 323-221-9934

The Natural Resources Agency
 Santa Monica Mountains Conservancy
 5750 Ramirez Canyon Road
 Malibu, California 90265
 Phone: 310-589-3200
 Fax: 310-589-3207
 www.smmc.ca.gov

Grantee's Authorized Representative: Cara Meyer, Deputy Executive Officer 323-221-9944, x117 cara.meyer@mrca.ca.gov

Name and Title Phone Number Email

Person with day-to-day responsibility: Ken Nelson, Chief of Fire Division ken.nelson@mrca.ca.gov

Name and Title Phone Number Email

Project Objective: The proposed grant would be used for the planning and execution of improvements at Temescal Gateway Park to improve public safety, increase structure protection from natural disasters, and facilitate restoration. Work proposed includes removal and thinning of vulnerable vegetation, clearance of litter and debris around and on structures, clearing drainage ways and pipes, sealing of vents and building penetrations/openings, and adding water storage. The maintenance storage buildings will be evaluated and may be replaced depending on the feasibility of upgrades. The work will be concentrated in the developed areas of the park. See attached for details. **Attach additional pages as necessary*

Project Address: 15601 Sunset Blvd., Pacific Palisades CA 90272

Latitude: 34.0498268 **Acreage:** variable **Trail Length:** N/A

Longitude: -118.5293992 **APN's:** 4422-027-900; 002-902 **Stream Miles:** N/A

Congressional District: 33 **State Senate District:** 26 **Assembly District:** 50

Tasks / Milestones: See attached budget **Budget:** **Completion Date:**

**Attach additional pages as necessary*

I certify that the information contained in this Grant Application form, including required attachments, is accurate.

Cara Meyer
 Cara Meyer
 cn=Cara Meyer, o=MRCA, ou,
 email=cara.meyer@mrca.ca.gov, c=US
 2018.11.30 15:00:35 -08'00'

Signature of Authorized Representative _____ Date _____

Proposition 1 Competitive Grant Application
Temescal Gateway Park Safety and Restoration Improvements
Mountains Recreation and Conservation Authority

The Mountains Recreation and Conservation Authority (MRCA) operates and manages Temescal Gateway Park (Temescal). Located in the Santa Monica Bay Watershed in the Pacific Palisades, Temescal is one of the most popular parks in the Santa Monica Mountains. The park encompasses 141 acres of oak and sycamore canyons, ridgetop views, and access to trails in Topanga State Park and Will Rogers State Historic Park. Thousands of people visit each year for hiking and other recreational activities.

The recent Woolsey Fire provides a clear picture of how a wildfire in the Santa Monica Mountains is likely to progress and what types of built facilities are most vulnerable. Buildings in close proximity to each other, such as in Temescal Gateway Park, make for a situation that can be difficult for firefighters to control. Woodlands and forests that are stressed after continued years of drought and various pests also present a challenge when they contain significant amounts of combustible dead wood and litter. During a conflagration, firefighting resources are highly likely to be stretched thinly and/or concentrating their efforts in areas outside of natural parkland. Given that the weather and ignition conditions which contributed to the Woolsey Fire are likely to occur again this season, it is imperative that capital improvements targeted toward protecting and restoring the resources of Temescal Gateway Park commence immediately.

The proposed \$200,000 grant would be used to plan and implement improvements to improve public safety, increase structure protection from natural disasters, and facilitate restoration. Work proposed includes removal and thinning of vulnerable vegetation, clearance of litter and debris around and on structures, clearing drainage ways and pipes, sealing of vents and building penetrations/openings, and adding water storage. The maintenance storage buildings will be evaluated and may be replaced depending on the feasibility of upgrades. The work will be concentrated in the developed areas of the park and focused on a goal of structure protection.

Although the scope includes activities other than vegetation management, this grant is submitted in the Vegetation Management because the intent fits best within that category: *Projects to reduce hazard fuels to reduce wildfire risks and protect watersheds and promote watershed health.*

Structures within the property that could be vulnerable to natural disasters include the classrooms, administration offices, restrooms, Elizabeth A. Cheadle Hall, staff residences, maintenance storage buildings, Stewart Hall, bungalows, cabins, dormitories, and the former pool house. Infrastructure elements that could be vulnerable include culverts, roads, various drainages, utilities, water tanks and storage, and trees within the park's forest that are undergoing stress from continued drought. While fire may still occur on the property after the work is complete, the proposed improvements will improve firefighters' ability to defend structures and other resources.

Materials will be chosen to minimize future maintenance costs where possible. The requested grant would fund project planning and design and construction of improvements. Work will be accomplished by a combination of MRCA staff and

Proposition 1 Competitive Grant Application
Temescal Gateway Park Safety and Restoration Improvements
Mountains Recreation and Conservation Authority

subcontractors.

Proposition 1 and the California Water Action Plan (Water Action Plan) outline priorities and strategies to help protect our developed and natural resources from prolonged drought and to establish a water conservation ethic. The proposed project aims to protect developed and natural resources in Temescal from wildfire, with a secondary benefit of helping to achieve greenhouse gas reduction targets. This wildfire prevention effort will help protect plant and animal species and their fragmented habitat found in urban and open space areas of Southern California. This project will result in the restoration and protection of resources within the park.

The objective of the vegetation management work is to reduce the amount of available fuel and create a defensible space to keep developed structures and other resources protected from fire.

Steep hillsides, such as those found in Temescal Canyon, require protection from erosion. Reducing wildfire risk, which in turn reduces erosion risk, provides multiple direct and indirect benefits including reducing sediment, ash, and organic matter from entering streams that drain into our watersheds, thereby limiting creek sedimentation and erosion and encouraging ground water recharge.

The proposed improvements will support ongoing public safety efforts at Temescal. Additionally, the work will protect the continued use and enjoyment of the park by the public. These management efforts avoid future emergency responses associated with higher costs than the proposed preventive measures.

Trees under stress due to the current long-term drought are more susceptible to pests and disease that can kill a previously healthy tree. At Temescal, these tend to be very mature, large trees. The removal of these trees is extremely costly due to the size and proximity to other resources. Removal is a necessary forestry management task due to the risks of infestation of other nearby trees, injury to people and property caused by weakened roots, and fire hazard.

California's efforts to meet goals mandated by the Global Warming Solutions Act ("AB 32") to reduce greenhouse gas emissions to 1990 levels by the year 2020 assumed no net emissions for wildland ecosystems by 2020, underestimating the potential of wildfires as a considerable greenhouse gas source. Current findings are showing that burned, or dead, vegetation releases carbon into the atmosphere as net emitters and not the carbon sinks we rely on them to be, further exacerbating climate change and its impacts.¹ Events such as the Woolsey Fire that are stronger, more damaging, and compounded by current drought conditions underscore the need to perform vegetation management.

¹ Gonzales, P. et.al. (2015) "Aboveground live carbon stock changes of California wildland ecosystems, 2001–2010", *Forest Ecology and Management, Volume 348, p68*

Proposition 1 Competitive Grant Application
Temescal Gateway Park Safety and Restoration Improvements
Mountains Recreation and Conservation Authority

Protection and restoration activities covered under this grant application will be performed by MRCA staff as well as outside contractors. Contractors are used where it is more cost efficient, or where it is necessary for timing. The funds will also be directed to capital improvements to structures within Temescal, which will result in greater longevity and usability to the structures, in addition to making them more defensible. Monitoring and reporting on the progress and effectiveness of the project will occur via written project status reports. After the project's completion, photographs will be provided upon request.

BUDGET

See attached budget. No matching funds are available for this project.

TIMELINE

The proposed project will be completed approximately 1 year after approval. Timeline may vary depending on weather events, and other factors outside of MRCA's control.

RESPONSE TO EVALUATION CRITERIA

Project achieves the purposes of Proposition 1 per Water Code Section 79732(a).

The proposed project will involve the protection and restoration of natural and developed resources by reducing flash fuel vegetation and making structures within Temescal more defensible. The proposed grant achieves the following Prop 1 purposes:

- 1) Protect and increase the economic benefits arising from healthy watersheds, fishery resources, and instream flow. Completion of this project will reduce the destructive potential of future fires, and associated high-cost emergency responses. Improvements to the property will reduce operational costs and protect the enterprise activities that occur at Temescal. Protection of the structures reduces the possibility of their loss, and consequent rebuilding expenses.
- 2) Implement watershed adaptation projects in order to reduce the impacts of climate change on California's communities and ecosystems. The removal of hazardous flash fuel vegetation, and actions to make structures more defensible, directly reduces wildfire risk. Such preventative efforts help to mitigate the release of carbon emissions that would otherwise exacerbate climate change.
- 8) Implement fuel treatment projects to reduce wildfire risks, protect watersheds tributary to water storage facilities, and promote watershed health. A portion of the proposed work is fuel treatment. The intent of the project is wildfire prevention project that will thereby help to protect watersheds and promote watershed health.
- 9) Protect and restore rural and urban watershed health to improve watershed storage capacity, forest health, protection of life and property, stormwater resource management, and greenhouse gas reduction. The reduction of flash fuels and drought-stricken trees

Proposition 1 Competitive Grant Application
Temescal Gateway Park Safety and Restoration Improvements
Mountains Recreation and Conservation Authority

will directly reduce wildfire risks, protect watersheds, protect habitats, improve air quality, and promote overall urban watershed health. The work is intended to provide public safety improvements that protect the property.

- 11) Reduce pollution or contamination of rivers, lakes, streams, or coastal waters, prevent and remediate mercury contamination from legacy mines, and protect or restore natural system functions that contribute to water supply, water quality, or flood management. Actions under the proposed project will reduce sediment, ash, and organic matter that would otherwise run off compromised soils with a large potential to fill the local water supply, and contaminate Temescal's coastal stream drainage. This in turn limits erosion and creek sedimentation and encourages ground water recharge.
- 12) Assist in the recovery of endangered, threatened, or migratory species by improving watershed health, instream flows, fish passage, coastal or inland wetland restoration, or other means, such as natural community conservation plan and habitat conservation plan implementation. Wildfire prevention directly helps to protect plant and animal species and their habitats found in fragmented urban interface and open space areas.

The project will provide multiple benefits related to water quality, water supply and/or watershed protection and restoration.

The proposed work will benefit the water quality and watershed health of Temescal Canyon. The activities will reduce the potential of sediment, ash, and organic matter from entering the Temescal Creek, and promote groundwater recharge.

The project results in restoration or protection of important species and habitat pursuant to the California Water Action Plan.

As mentioned, wildfire prevention and erosion control efforts, such as the proposed project, protect the plant and animal species and their habitats found in Temescal Canyon, Topanga State Park, and other nearby public lands.

The project employs new or innovative technology or practices, including decision support tools that support the integration of multiple jurisdictions, including, but not limited to, water supply, flood control, land use, and sanitation.

The project is a proactive approach to fortify one of Southern California's most popular parks from wildfire damage. As an immediate response to the destruction of the Woolsey Fire, the project takes advantage of our firefighters' first hand experience defending structures in other areas of the Santa Monica Mountains and Simi Hills. The ability to have front line responders actively involved in protection work is uncommon and is an innovative use of our resources.

Applicant has proven that implementation of the project is feasible.

The MRCA staff has many years of experience and expertise to undertake these tasks.

Applicant has financial capacity to perform project on a reimbursable basis.

MRCA has the financial capacity to perform this project on a reimbursable basis. MRCA

Proposition 1 Competitive Grant Application
Temescal Gateway Park Safety and Restoration Improvements
Mountains Recreation and Conservation Authority

has been implementing capital projects on a reimbursable basis for many years and anticipates reimbursable payments in our budgets. MRCA also maintains a line of credit that can be drawn upon in the event of an extended delay.

Applicant, or active project partner, has successfully completed multiple projects of similar size and scope.

MRCA has an in-house Fire Division of full-time staff and seasonal employees who have been eliminating flash fuels and invasive nonnatives on MRCA-managed properties since the agency was founded in 1985. Staff also makes use of outside contractors to increase efficiency during busy growing seasons. MRCA's Construction Division staff similarly has decades of experience implementing improvement projects.

The project is a partnership between two or more organizations and each organization has committed to contributing toward project implementation.

MRCA is a local public agency exercising joint powers of the Santa Monica Mountains Conservancy, the Conejo Recreation & Park District, and the Rancho Simi Recreation & Park District pursuant to Section 6500 *et seq.* of the Government Code. These three entities each have a voting member on MRCA's Governing Board, which will consider the proposed grant application on December 5, 2018.

Completion of the project would assist a government agency in fulfilling a water resources protection, watershed ecosystem restoration, or multi-benefit river parkway plan.

The MRCA is a local government agency with the responsibility to protect and manage both the lands it owns and those owned by the Santa Monica Mountains Conservancy. The management of vegetation within Temescal fulfills the goals of watershed ecosystem restoration. The *Santa Monica Mountains Comprehensive Plan*, a resource protection plan, recommended use of Temescal's conference area for recreational uses. The proposed project helps to carry out that recommendation.

Applicant, or project partner, has 1+ years experience maintaining and operating projects of similar size and scope.

The MRCA has been managing Temescal Gateway Park since the land was put into public ownership in 1994. MRCA staff has been performing fuel hazard reduction and vegetation management, and construction and improvement projects on an ongoing basis since the agency's inception in 1985.

Applicant has identified maintenance funding for at least 2 years after completion.

MRCA will continue to provide maintenance of Temescal Gateway Park funded by enterprise and restricted sources.

The project substantially restores a site by reestablishment of native species to reduce wildfire risk and promote watershed health.

Vegetation management through fuel hazard reduction and removal of nonnative species promotes the re-establishment of native species. Removing failing trees will help other

Proposition 1 Competitive Grant Application
Temescal Gateway Park Safety and Restoration Improvements
Mountains Recreation and Conservation Authority

plants thrive, ensuring a healthier watershed.

The project upgrades an existing regional trail or river parkway to protect its continued use and enjoyment by the public.

Trails at Temescal connect with the regional trail system of Topanga State Park and other public lands of the Santa Monica Mountains. Wildfire prevention protects the continued use and enjoyment of these regional trails, and prevents damage to public resources.

The project includes improvements that would significantly reduce the amount of untreated runoff entering urban rivers, waterways, or coastal watersheds.

Erosion and watershed protection are also accomplished by the prevention of wildfires. The proposed work therefore will serve to reduce the potential of sediment, ash, and organic matter loading of the streams in this coastal watershed.

The project includes improvements that would improve or support regeneration of important native vegetative cover on slopes near a stream or river, which if substantially disturbed may contribute to flood, erosion, creek sedimentation, or reduced groundwater recharge.

A portion of the work proposed will occur on slopes and existing structures near the Temescal creek, on soil that would be prone to erosion without proper vegetative cover. The removal of invasive exotic species will help native vegetation thrive. By preventing wildfire, the proposed grant will also prevent the erosion of sediment, ash, and organic matter into streams.

The project implements public safety practices by reducing wildfire risk.

The primary goal of the proposed grant is to reduce wildfire risk. The protection and restoration of both natural and developed resources supports ongoing public safety efforts. Managing vegetation within Temescal protects its continued use and enjoyment by the public. The crews that will implement the project have regular safety trainings and briefings.

The project implements fuel treatment projects to reduce wildfire risks, protect watersheds tributary to water storage facilities, and promote watershed health.

The proposed grant includes fuel treatment work that will accomplish the stated goals. Benefits will accrue to the watershed in general, and to downstream lands.

The project substantially restores a site by removal of exotic species to reduce wildfire risk and promote watershed health.

The proposed project includes the removal of exotic species to reduce wildfire risk and protect watershed health.

Applicant has conducted outreach to the affected communities.

MRCA staff maintains relationships with local community groups, homeowners associations, and other stakeholders to keep affected communities aware of the vegetation management activities. Posted signs provide contact information for the

Proposition 1 Competitive Grant Application
Temescal Gateway Park Safety and Restoration Improvements
Mountains Recreation and Conservation Authority

public. Reports on land affected by the Woolsey Fire have been given at publicly-noticed Governing Board meetings.

The project adds visitor-serving amenities, accessibility, and public safety improvements to public parkland with multiple ecosystem benefits.

The proposed project is targeted to achieve public safety improvements at Temescal Gateway Park. No new amenities will be added, but Temescal's extensive features will be protected and restored.

Project will benefit specially protected species pursuant to the California Wildlife Protection Act of 1990.

In June of 1990 voters of California approved Proposition 117, the California Wildlife Protection Act, prohibiting the sport hunting of the California Mountain Lion and declaring them to be a specially protected species. The local population of mountain lions requires large areas of undisturbed habitat to thrive. Vegetation management reduces the possibility of the destruction of this habitat due to wildfire or erosion, benefiting the Mountain Lion population.

Project has approval from all landowners to complete the project, or Applicant is the landowner.

The vegetation management project will be performed on land managed by MRCA.

The project demonstrates a reduction in baseline greenhouse gas emissions through carbon sequestration or other innovative techniques or project designs, such as diverting organic material from landfills.

The prevention of fire retains the CO₂ emissions within the carbon sinks of plant material and prevents their release in atmospheric concentrations. In turn, healthy trees aid in reducing Greenhouse Gas (GHG) emissions through carbon sequestration helping to provide clean air for California's residents and helping with the adverse impacts of global warming. Refer to Appendix A for carbon emissions calculations.

The entirety of Temescal Gateway Park is 141 acres. although it is impossible to predict exactly which areas and structures may burn, for calculation purposes, it is assumed that 10% of the park's footprint (14 acres) will be affected.

The proposed project will prevent an approximated 980 metric tons of CO₂ from being released into the atmosphere due to wildfire. Refer to Appendix A for carbon emissions calculations.

The project acquires, preserves, or restores natural areas at risk of development and quantifiably avoids emissions associated with development.

The project work will be conducted on land not designated for development, therefore limiting development-related emissions and preserving, protecting and maintaining healthy open space by reducing wildfire risk.

Proposition 1 Competitive Grant Application
Temescal Gateway Park Safety and Restoration Improvements
Mountains Recreation and Conservation Authority

The project contributes to tree canopy cover and/or greenways in urban areas to mitigate heat island effects and promote public health and recreation.

Temescal Gateway Park is located within the urban metropolis of Los Angeles. The project will benefit tree canopy health by removing invasive competition species, ensuring the ongoing public health benefits contributed by those trees. Additionally, through its protection of drought-tolerant California native trees and shrubs, the project will protect and create additional habitat for local wildlife; ensure public enjoyment of this wildlife and habitat; provide shade to reduce Urban Heat Island effects; promote infiltration; generate oxygen; and sequester carbon and remove pollutants from the air thus helping to further promote and allow for public health and recreation.

The project acquires and/or maintains wildlife corridors and linkages to provide connections between areas of undeveloped lands, particularly significant public lands and key habitat ecosystems.

The area affected by the proposed grant connects to major and minor wildlife corridors that will benefit from the reduction of wildfire risk.

The project develops or maintains multi-use trails that connect communities, provides access to public resources and reduces vehicle miles traveled.

The proposed project will benefit regional multi-use trails by reducing the risk of wildfire and erosion. These trails provide access to public lands.

The project engages local communities through outreach, education, and interpretation regarding long-term stewardship and climate change awareness.

MRCA staff maintain relationships with local community groups, homeowners associations, and other stakeholders to keep affected communities aware of our activities. Posted signs provide contact information for the public.

Project utilizes a local job training entity for a portion of the work.

MRCA recruits staff for the Fire Division from a variety of sources, including job training entities such as the Los Angeles Conservation Corps and training programs such as the Rio Hondo Fire Academy. A portion of work will be conducted by contractors selected through a competitive bid process, and job training programs are eligible to bid.

Appendix A: Carbon Emissions Calculations

CO_2 emissions = $A_{\text{burned}} \times C_{\text{density}} \times f_{\text{combustion}} \times 3.66$

CO_2 emissions = Carbon Dioxide emissions from Forest Fires

A_{burned} = Area burned in hectares (ha)

C_{density} = Carbon density in tons of Carbon per hectare in Tier 2 (105 tC/ht)

$f_{\text{combustion}}$ = combustion factor (0.45)

3.66 = Carbon to Carbon Dioxide conversion (44/12)

RATIO = 70.01 metric ton of carbon dioxide per acre burned

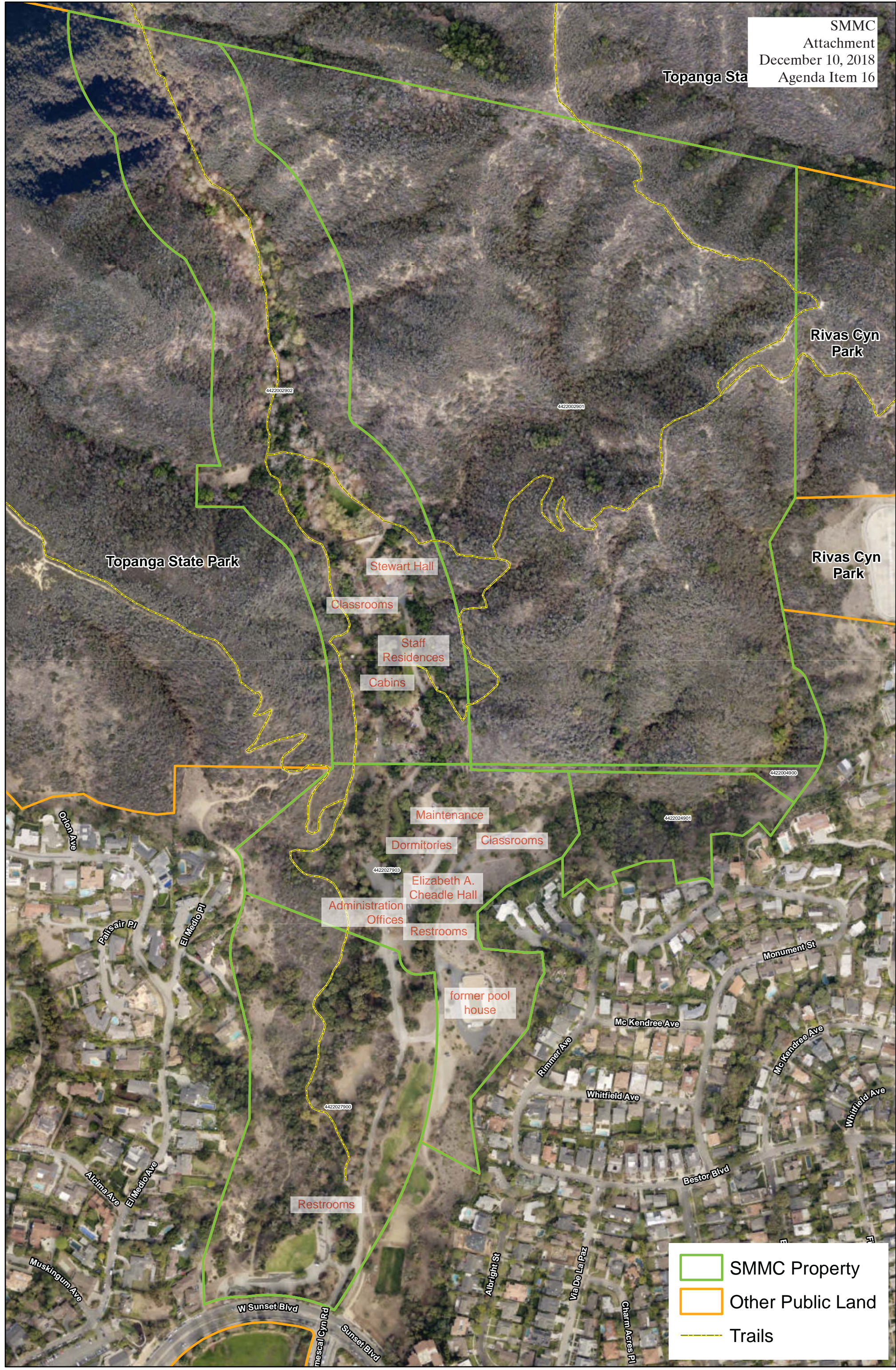
Source: <http://www3.epa.gov/ttn/chief/firesummit/Flugge.pdf>
Referencing IPCC 2003 and IPCC 2006

Estimate of 14 acres (1/10 of Temescal Gateway Park's 141 acres) protected.

14 acres = 5.67 ha

CO_2 emissions = 5.67 ha x 105 tC/ht x 0.45 x 3.66 = **980 metric tons of CO_2 emissions prevented**

Budget for Grant Application		
Temescal Gateway Park Safety and Restoration Improvements		
		Grant Request: \$ 200,000
Budget Item		Amount
A. MRCA Staff		
various	Direct Salaries, Payroll Tax, Benefits & Allocations	\$ 40,000
9998, 9999	Administrative Cost	\$ 55,000
SUBTOTAL A, MRCA Staff:		\$ 95,000
B. Materials and Supplies		
5112	Land & Building Improvement - Materials	\$ 5,000
5113	Land & Building Improvement - Equipment	\$ 5,000
7777	Equipment Allocation	
SUBTOTAL B, Materials and Supplies:		\$ 10,000
C. Consultants and Contractors		
5114	Land & Building Improvement - Subcontractors	\$ 90,000
5116	Land & Building Improvement - Other	\$ 5,000
SUBTOTAL C, Consultants and Contractors:		\$ 95,000
Grand Total (A+B+C):		\$ 200,000



Temescal Gateway Park

- SMMC Property
- Other Public Land
- Trails

