

MOUNTAINS RECREATION & CONSERVATION AUTHORITY

Los Angeles River Center & Gardens
570 West Avenue Twenty-Six, Suite 100
Los Angeles, California 90065
Phone (323) 221-9944 Fax (323) 221-9934

June 18, 2018

Chairperson Irma Muñoz
c/o Rorie Skei, Chief Deputy Executive Director
Santa Monica Mountains Conservancy
570 Ramirez Canyon Road
Malibu, California 90265

**Proposition 68 Competitive Grant Application
Pre-Improvement Planning, Coastal Slope Trail Public Works Plan**

Dear Chairperson Muñoz and Conservancy Members:

I am pleased to present the enclosed draft application for a grant for Pre-improvement planning for the Coastal Slope Trail Public Works Plan. The Mountains Recreation and Conservation Authority (MRCA) requests a grant in the sum of \$500,000 from the California Drought, Water, Parks, Climate, Coastal Protection and Outdoor Access for All Act of 2018 (Proposition 68), under the Conservancy's Competitive Grant Program. The MRCA's Governing Board will consider submittal of this application on July 3, 2019.

The proposed grant would fund the pre-improvement planning, design and engineering, environmental analysis, preparation of the Public Works Plan (PWP), and application materials required to submit the PWP to the California Coastal Commission.

Please refer to the enclosed materials that describe the proposed grant and how it fits the Conservancy's Evaluation Criteria. If you have any questions regarding this, please contact me at (323) 221-9944, extension 117.

Sincerely,

Cara Meyer
Deputy Executive Officer

Proposition 68 Competitive Grant Application
Visitor Serving Development and Improvement Project
Coastal Slope Trail Public Works Plan
Mountains Recreation and Conservation Authority

SCOPE OF WORK / PROJECT DESCRIPTION

The Mountains Recreation and Conservation Authority (MRCA) requests grant funding from the California Drought, Water, Parks, Climate, Coastal Protection, and Outdoor Access for All Act of 2018 (Proposition 68) through the Santa Monica Mountains Conservancy's (Conservancy) Proposition 68 Grant Program to facilitate the proposed Pre-Improvement Planning for the Coastal Slope Trail Public Works Plan.

The MRCA is proposing a new Public Works Plan (PWP) to authorize implementation of the central segment of the Coastal Slope Trail (CST) from Kanan Dume Road through Tuna Canyon Park (the Project). The PWP includes development of amenities to complement the trail such as trailheads, public parking, picnic areas, and restroom facilities. The proposed conceptual alignment of the Coastal Slope Trail traverses several canyons, slopes, and ridges along the Santa Monica Mountains within the City of Malibu and the unincorporated areas of the County of Los Angeles. The exact alignment of the trail may be subject to change, and the locations of amenities will be determined during the technical analysis.

Section 30605 of the Coastal Act provides that as an alternative to project by project review, plans for public works may be submitted to the Coastal Commission for review in the same manner prescribed for review of local coastal programs. Section 30114 of the Coastal Act defines "public works" as including "all publicly financed recreational facilities, all projects of the State Coastal Conservancy, and any development by a special district." Since the proposed Project traverses multiple jurisdictions and must be implemented through a series of acquisitions and improvement projects over time, a PWP is the appropriate means to evaluate consistency with the Coastal Act and the adopted Local Coastal Programs of the City of Malibu and County of Los Angeles. The proposed PWP is subject to environmental review pursuant to the California Environmental Quality Act (CEQA). The proposed PWP will be submitted to the California Coastal Commission (CCC) for certification pursuant to Sections 30321, 30515, and 30605 of the Coastal Act.

The activities to be funded by the proposed grant include pre-improvement planning, design and engineering, environmental analysis, preparation of the PWP, and application materials. Work would be accomplished by a combination of MRCA staff, professional consultants, and subcontractors. Once implemented, the CST would create new access to programs, services, and activities for a variety of park users and will contribute to a more enjoyable user experience. The proposed Project includes funding for community access programs, to be held by project partner Community Nature Connection (CNC), specifically to expand access to the CST area for diverse populations.

If the subject grant is not awarded, MRCA would be unable to complete the project and development of the CST would be suspended until funding comes available.

Proposition 68 Competitive Grant Application
Visitor Serving Development and Improvement Project
Coastal Slope Trail Public Works Plan
Mountains Recreation and Conservation Authority

BUDGET

This grant request is for a total of \$500,000. See attached budget.

TIMELINE

MRCA requests a completion date of June 30, 2021. Work will commence upon execution of the grant agreement.

Selection of consultants	1 month
Pre-improvement planning and engineering	2-4 months
Environmental Studies	3 months
Preparation of PWP application materials	3-4 months
Review by CCC staff	3-6 months
Contingency for unexpected delays	6 months

Total: 12-24 months

Proposition 68 Competitive Grant Application
Visitor Serving Development and Improvement Project
Coastal Slope Trail Public Works Plan
Mountains Recreation and Conservation Authority

RESPONSES TO EVALUATION CRITERIA

Prioritization Value

The proposed project achieves the following Proposition 68 grant program priorities:

PV1. Project achieves 80001(b)(3)(4) by providing urban recreation and protecting or restoring natural resources.

The CST will provide a new recreation resource to the greater urban area of Los Angeles, as well as protect and restore natural resources along the CST. Specific opportunities will be identified during the environmental analysis.

PV2. Project achieves 80001(b)(5) by providing workforce education and training, contractor, and job opportunities for disadvantaged communities.

A portion of the grant will be directed to non-profit CNC, an organization focused on serving disadvantaged communities that regularly provides training for volunteer naturalists. A naturalist's skill set is needed for paid positions with camps, parks, and recreational program providers. During implementation projects, construction work will be either self-performed or completed by contractors via a competitive bid process. Trade organizations representing disadvantaged businesses will be notified of all bid opportunities.

PV3. Project achieves 80001(b)(6) by having already obtained all required permits and entitlements.

This criterion is not applicable, as the proposed project includes completion of an entitlement process.

PV4. Project achieves 80001(b)(9) - advances solutions to prevent displacement if a potential unintended consequence associated with the project is an increase in the cost of housing.

This criterion is not applicable. Compared to the region, the project area has very a low percentile of low-income households stressed by high housing costs, as analyzed by CalEnviroScreen 3.0¹.

PV5. Project achieves three or more actions listed in 80001(b)(8)(A through G).

By nature of the project, it will accomplish the purpose of promoting diversity and inclusion in our public lands as recommended by Proposition 68. The primary purpose of the project is to improve access to the public to important coastal recreation resources.

The project includes funding for community access programs, to be held by project

¹ *Housing Burdened Low Income Households. Percent of households in a census tract that are both low income (making less than 80% of the HUD Area Median Family Income) and severely burdened by housing costs (paying greater than 50% of their income to housing costs). (5-year estimates, 2009-2013).*
<https://oehha.ca.gov/media/downloads/calenviroscreen/report/ces3report.pdf#page=135>

Proposition 68 Competitive Grant Application
Visitor Serving Development and Improvement Project
Coastal Slope Trail Public Works Plan
Mountains Recreation and Conservation Authority

partner CNC, specifically to expand access to the CST area for diverse populations. Active outreach to diverse populations, particularly minority, low-income, and disabled populations, is an integral part of the MRCA's goals, and is a focus of CNC's mission. All communications about the access programs will use multilingual and culturally appropriate materials. As part of their regular employee duties, MRCA staff promote awareness of open spaces, parks, trail locations, and restoration activities.

PV6. Project achieves more than one of the Conservancy's Strategic Objectives.
The proposed project furthers the following Conservancy Strategic Objectives:

- Implement the *Santa Monica Mountains Comprehensive Plan*;
- Create comprehensive, regional, and integrated trails plan;
- Develop comprehensive plan for areas not covered by initial Conservancy Comprehensive Plan and incorporate and link those areas to protect species and ecosystems;
- Further cooperation with local governments in the region to secure open space and parkland;
- Expand efforts to integrate nature into the urban environment;
- Expand education, public access, and resource stewardship components in a manner that best serves the public, protects habitat, and provides recreational opportunities; and
- Develop long term capital improvement and maintenance plans.

PV7. Project achieves more than one Common Ground guiding principle.
This criterion is not applicable.

Category Value

CV1. The project will provide benefits to multiple values including water, recreation, habitat, and interpretation of natural resources.

Upon completion, the CST and its related improvement projects will have benefits to water, recreation, and habitat, and for the interpretation of natural resources. The CST provides a unique recreation resource as scenic coastal and water views are the prime feature of the CST. By strategically focusing trails in areas of least impact to habitat, the CST will be able to protect sensitive habitat while providing for this unique coastal experience. Protection of the CST corridor enhances the movement of large mammals. Community access programs provided by CNC will expand access to the CST area for diverse populations and create opportunities for interpretation of natural resources.

CV2. The project implements a major component of an existing relevant plan related to a major recreational facility, regional ecosystem restoration, or master land protection plan.

Proposition 68 Competitive Grant Application
Visitor Serving Development and Improvement Project
Coastal Slope Trail Public Works Plan
Mountains Recreation and Conservation Authority

In addition to the *Santa Monica Mountains Comprehensive Plan*, the proposed project is consistent with other applicable plans, including the following:

- California Coastal Act
- Santa Monica Mountains Conservancy Strategic Plan
- City of Malibu, Local Coastal Program
- County of Los Angeles, Santa Monica Mountains Local Coastal Program
- County of Los Angeles, General Plan

CV3. The project provides a plan or feasibility study to advance cooperative watershed health protection activities or recreation goals important to two or more organizations.

The proposed CST crosses coastal watersheds in areas that are otherwise threatened by increasing development. Conservation and recreation benefits can be realized through the management of these lands and the proposed CST by the MRCA. The significance of the CST is emphasized through its presence on parkland and trails maps included in the City of Malibu's General Plan and Local Coastal Program (LCP). Its presence in the City's LCP elevates the significance of the CST to a statewide significance, as it satisfies the public access and coastal resource-dependent use objectives of the Coastal Act, which created the CCC to ensure that its objectives are carried out.

CV4. Applicant has a realistic plan for serving disadvantaged communities upon completion of the improvements.

Disadvantaged communities will be served through new community access programs provided by CNC with funding from this grant. CNC has been providing access to nature and public lands for over 25 years. The CST itself will provide increased opportunities for visitation and recreation related to coastal resources to the general public, including disadvantaged populations.

CV5. The project uses renewable or non-potable water sources of water, such as reclaimed water, captured stormwater, or other method.

Such measures could be incorporated into the proposed improvement projects when the CST is implemented, but this scale of design is more detailed than will be studied for the PWP.

CV6. Project implements Best Management Practices (BMP) to treat stormwater.

Mitigation measures to reduce impacts on water resources will be studied as part of the environmental analysis, including BMPs for stormwater management during construction.

CV7. Project provides safe and reliable drinking water supplies to park and open space visitors.

New trailheads and amenities along the CST will include new accessible drinking

Proposition 68 Competitive Grant Application
Visitor Serving Development and Improvement Project
Coastal Slope Trail Public Works Plan
Mountains Recreation and Conservation Authority

fountain(s) for visitors to enjoy safe and reliable water supplies.

- CV8. The project provides a high-quality access point for nearby open space, parkland, regional multi-modal trails, or water-based recreation.
The entire purpose and intent of the proposed Project is to create new high-quality access for the public use and enjoyment of coastal recreational resources along the Santa Monica Mountains. The proposed CST will cross several regionally significant parklands including, but not limited to, Ramirez Canyon Park, Escondido Canyon Park, Corral Canyon Park, Solstice Canyon Park, James Cameron Nature Preserve, and Tuna Canyon Park.
- DV9. The project completes a new, significant link in a regional trail system.
Implementation of the Kanan Dume to Tuna Canyon segment will complete a significant link in the CST network, which will connect several parklands together where there are currently no connections, such as from Ramirez Canyon Park to Escondido Canyon Park.
- CV10. Project adds new trail or recreational resources not available within a 0.5-mile radius.
The proposed Project includes a new trail with accompanying recreational amenities. Portions of the proposed CST may be within 0.5 miles of similar resources but there may not be any mechanisms to link these resources together. The proposed CST will provide connection opportunities for these resources. See answer to DV9.
- CV11. The project contains multi-modal accommodations that will benefit hikers, cyclists and equestrians.
The proposed Project is a multi-modal trail and will benefit all these user groups for a large swath of the coastal Santa Monica Mountains.
- CV12. The project results in new public access to a natural resource with high interpretive and/or educational value, or enhances existing access.
The proposed CST provides new public access to coastal resources with high interpretive and educational value and is also a resource in itself that enhances existing access with recreational amenities and additional connections to separate parklands.
- CV13. The project provides non-personal interpretive elements that will significantly enhance appreciation and enjoyment of a natural resource.
The trailheads and visitor amenities to be implemented along the proposed CST could include non-personal interpretive signage, such as “every drop counts” or “leave no trace” signs, that will inform visitors about water resources and the importance of conservation.
- CV14. The project creates a new venue, or enhances an existing venue, for education

Proposition 68 Competitive Grant Application
Visitor Serving Development and Improvement Project
Coastal Slope Trail Public Works Plan
Mountains Recreation and Conservation Authority

and/or interpretation activities that promote natural resources stewardship.

The trailheads and visitor amenities to be implemented along the trail could include venues for education and interpretation activities. The project includes a 5% line item for community access programs, and these programs will promote stewardship of natural resources.

CV15. The project alleviates stress on other overburdened recreational resources within a 0.5-mile radius.

The proposed CST has the potential to relieve stress on overburdened recreational resources in the coastal areas of the Santa Monica Mountains. There are many places along the trail where this is expected to occur. For example, the sole parking lot and existing Winding Way Trail that serve Escondido Canyon Park are consistently full and crowded. Completion of the CST and its new trailheads will give visitors new options for accessing the park.

CV16. The project provides a new vista point or overlook for a significant scenic view shed.

Several new vista points and overlooks will be created along the proposed CST.

CV17. The project adds visitor-serving amenities, accessibility, and public safety improvements to existing parkland.

A core feature of the proposed Project is the provision of new amenities that will serve existing parklands, as well as the new CST segments. These improvements will increase opportunities for recreation, activities, and programs to a wide variety of people, of all abilities.

CV18. Project results in additional uses for users of a wide range of ability levels.

Recreation opportunities for a range of ability levels could be incorporated into improvement projects when the proposed CST is implemented pursuant to the proposed PWP. The improvement projects will use current codes and standards to ensure that a wide range of abilities will be accommodated.

CV19. The project is designed to accommodate the needs of users from a variety of cultural and economic backgrounds.

As mentioned, a core purpose of the proposed Project is to improve access for visitation, recreation, activities, and programs to the public, including people from a variety of cultural and economic backgrounds who live throughout Los Angeles. These amenities are, and will continue to be, free of charge. The CST will serve diverse populations, including disadvantaged, minority, low-income, and disabled groups from many different cultures and backgrounds.

CV20. The project directly abuts and increases the ecosystem function of a protected habitat area including fish and wildlife corridors.

Portions of the proposed CST abut protected habitat areas. Opportunities to increase ecosystem function of protected habitat areas will be studied as part of

Proposition 68 Competitive Grant Application
Visitor Serving Development and Improvement Project
Coastal Slope Trail Public Works Plan
Mountains Recreation and Conservation Authority

the environmental analysis.

CV21. The project includes restoration, protection or enhancements of a native ecosystem appropriate to the site.

Portions of the proposed CST abut protected habitat areas. Opportunities for restoration of native ecosystems will be studied as part of the environmental analysis.

CV22. Project will benefit specially protected species pursuant to the California Wildlife Protection Act of 1990.

Protection of the CST corridor enhances the movement of mountain lions and all other large mammals. Potential impacts and benefits for specially protected species will be studied as part of the environmental analysis and if needed, mitigation measures to benefit such species will be incorporated.

CV23. The project employs new or innovative technology or practices.

The proposed Project is part of a proactive approach to improving access to coastal resources, as well as enhancing recreation and providing connection opportunities between coastal parklands.

Implementation Value

IV1. Applicant has proven that implementation of the project is feasible.

MRCA has years of experience in planning, designing, permitting and implementing complex improvement projects and has conducted enough research to confirm the Project's feasibility. The MRCA manages many of the lands in the plan area.

IV2. Applicant has financial capacity to perform project on a reimbursable basis.

The majority of projects that the MRCA has historically completed are funded by grants on a reimbursable basis. MRCA has full confidence and capacity to begin and complete the project under this situation.

IV3. Applicant, or active project partner, has successfully completed multiple projects of similar size and scope.

The MRCA has successfully completed numerous trail and planning projects, including previous Public Works Plans.

IV4. The project is a partnership between two or more organizations and each organization has committed to contributing toward project implementation.

In addition to the work implemented by MRCA, the grant includes funding for non-profit Community Nature Connection (CNC) to provide community access programs.

Proposition 68 Competitive Grant Application
Visitor Serving Development and Improvement Project
Coastal Slope Trail Public Works Plan
Mountains Recreation and Conservation Authority

- IV5. Applicant has conducted outreach to the affected communities.
Previous planning efforts have included extensive public outreach. The grant includes funding for non-profit CNC to provide programs along the proposed CST for local disadvantaged communities and the general public.
- IV6. Applicant, or project partner, has 1+ years' experience maintaining and operating projects of similar size and scope.
MRCA has more than 30 years of experience implementing pre-improvement projects similar to the proposed Project.
- IV7. Applicant has identified maintenance funding for at least 2 years after completion.
The long-term operation and maintenance of project improvements will be defined at the time that projects are implemented.
- IV8. Project has approval from all landowners to complete the project, or Applicant is the landowner.
Applicant is a landowner for large portions of the study area.

Climate Change Value

- CC1. The project demonstrates a reduction in baseline greenhouse gas emissions through carbon sequestration or other innovative techniques or project designs, such as diverting organic material from landfills.
Such measures could be incorporated into improvement projects when the proposed CST is implemented, but this scale of design is more detailed than will be studied for the proposed Project.
- CC2. The project implements water saving technologies and techniques to yield quantifiable water and energy savings. Such techniques may include the use of drought-efficient landscaping, including climate resilient and native landscaping whenever possible, stormwater filtration, impervious surfaces, green roofs and other forms of water capture and storage.
Such measures could be incorporated into improvement projects when the proposed CST is implemented, but this scale of design is more detailed than will be studied for the proposed PWP.
- CC3. The project contributes to tree canopy cover and/or greenways in urban areas to mitigate heat island effects and promote public health and recreation.
No change to tree canopy cover in urban areas is expected, but eventual implementation projects may add trees and shade to trailheads and restoration areas.
- CC4. The project develops or maintains multi-use trails that connect communities, provides access to public resources and reduces vehicle miles traveled.

Proposition 68 Competitive Grant Application
Visitor Serving Development and Improvement Project
Coastal Slope Trail Public Works Plan
Mountains Recreation and Conservation Authority

The proposed Project includes a multi-use trail whose primary purpose is to provide access to public resources.

- CC5. The project engages local communities through outreach, education, and interpretation regarding long-term stewardship and climate change awareness.
The grant includes a 5% line item for partner CNC to provide access to the proposed CST to local communities. CNC programs are designed to increase stewardship of natural resources. The trailheads to be constructed when the CST is implemented may incorporate non-personal interpretive signage, such as “every drop counts” or “leave no trace” signs, that will inform visitors about natural resources and stewardship actions they can take.
- CC6. The project implements water saving techniques that utilize nature-based solutions like wetlands, rain gardens, swales, berms, curb cuts with parkway basins, infiltration trenches, vegetation, tree planting, stream daylighting/restoration, and floodplain reclamation.
Such measures could be incorporated into improvement projects when the proposed CST is implemented, but this scale of design is more detailed than will be studied for the proposed Project.

Additional Considerations

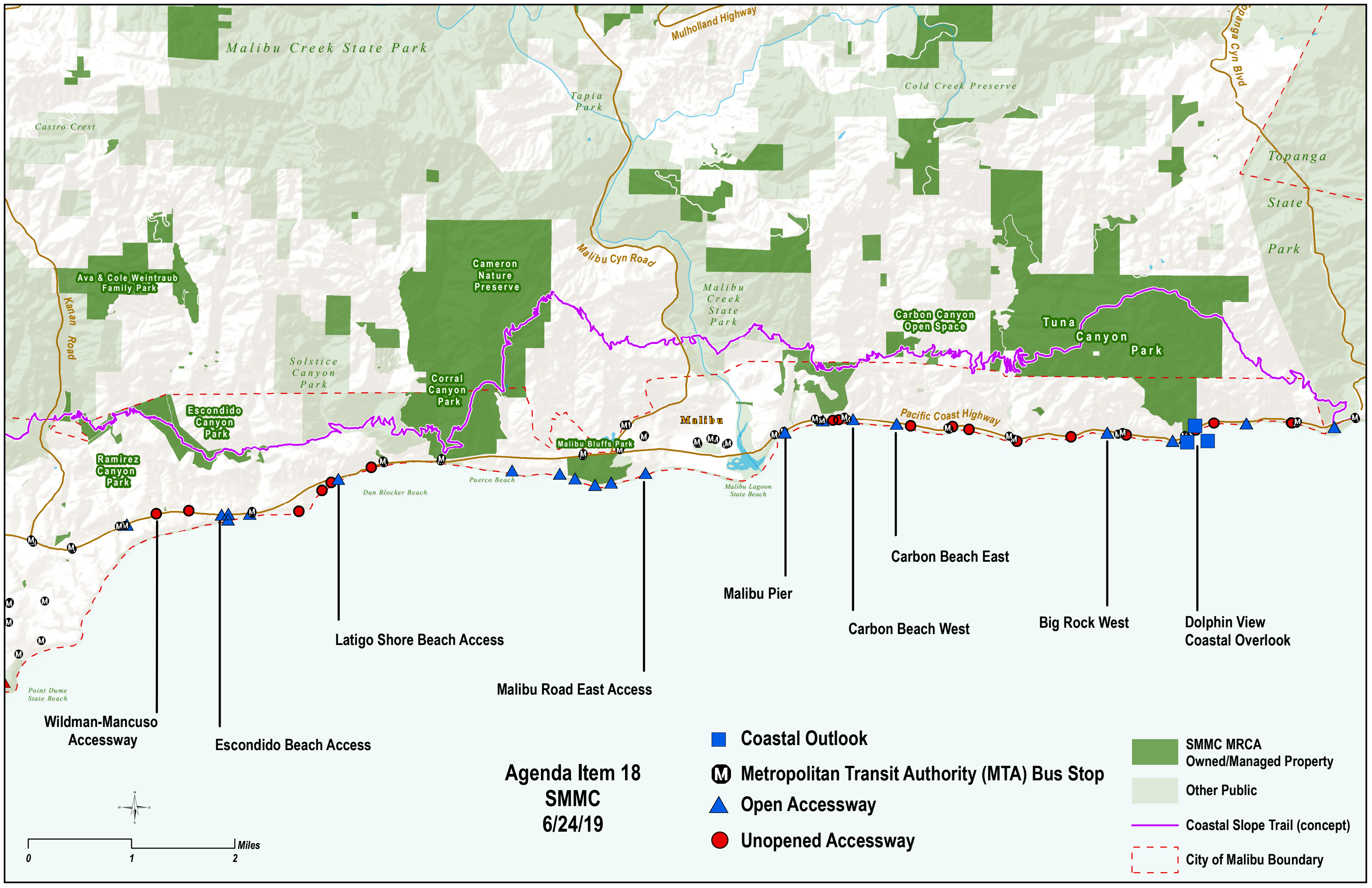
- AC1. The site is subject to an imminent threat that would preclude future implementation value.
Completion of the proposed PWP is necessary to combat the increasing rates of private development in the coastal areas of the Santa Monica Mountains, which have lessened the value of coastal resources that draws visitors to these mountains. The proposed PWP intends to develop the CST and associated recreation amenities to protect and preserve these valuable coastal resources for future generations to enjoy.
- AC2. Project utilizes a local job training entity for a portion of the work.
A portion of the grant is for community access programs provided by non-profit CNC, which regularly provide training for volunteer naturalists. A naturalist’s skill set is needed for paid positions with camps, parks, and recreational program providers.
- AC3. Project is within 0.25 miles of public transportation.
Metro Express Line 534 runs along Pacific Coast Highway. The majority of the Coastal Slope Trail is more than 0.25 miles away, except where it comes down to the southern border of Corral Canyon.
- AC4. Project serves a disadvantaged community.
The proposed CST is not located within a disadvantaged community. The subgrant

Proposition 68 Competitive Grant Application
Visitor Serving Development and Improvement Project
Coastal Slope Trail Public Works Plan
Mountains Recreation and Conservation Authority

to CNC is intended to provide access to the project area to disadvantaged communities. All communities have people with mobility impairments that will benefit from the new amenities that will be constructed as the CST is implemented.

AC5. Project serves a severely disadvantaged community.

The proposed CST is not located in a severely disadvantaged community as defined by the Proposition 68 Grant Guidelines. Attendees of the programs to be offered by CNC under this grant could potentially include residents of a severely disadvantaged community.



Malibu Creek State Park

Mulholland Highway

Tapia Park

Cold Creek Preserve

Castro Crest

Topanga

State

Park

Ava & Cole Weintraub Family Park

Cameron Nature Preserve

Malibu Cyn Road

Malibu Creek State Park

Carbon Canyon Open Space

Tuna Canyon Park

Kanan Road

Solstice Canyon Park

Corral Canyon Park

Escondido Canyon Park

Ramirez Canyon Park

Malibu Bluffs Park

Malibu

Pacific Coast Highway

Dan Blocker Beach

Puerto Beach

Malibu Lagoon State Beach

Latigo Shore Beach Access

Malibu Road East Access

Malibu Pier

Carbon Beach East

Carbon Beach West

Big Rock West

Dolphin View Coastal Overlook

Wildman-Mancuso Accessway

Escondido Beach Access

Agenda Item 18
SMMC
6/24/19

■ Coastal Outlook

Ⓜ Metropolitan Transit Authority (MTA) Bus Stop

▲ Open Accessway

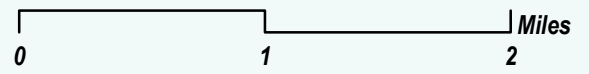
● Unopened Accessway

■ SMMC MRCA Owned/Managed Property

■ Other Public

— Coastal Slope Trail (concept)

- - - City of Malibu Boundary



**Budget for Grant Application
Pre-Improvement Planning, Coastal Slope Trail Public Works Plan**

Grant Request: \$ 500,000

Budget Item	Amount
A. MRCA Staff	
various Direct Salaries, Payroll Tax, Benefits & Allocations	
Project Management, Pre-Improvement Planning	\$ 93,500
9998, 9999 Administrative Cost	\$ 65,000
SUBTOTAL A, MRCA Staff:	\$ 158,500
B. Materials and Supplies	
5115 Land & Building Improvement - Design/Pre-Construction	\$ 5,000
CCC Fees	\$ 20,000
7777 Equipment Allocation	\$ 1,500
SUBTOTAL B, Materials and Supplies:	\$ 26,500
C. Consultants and Contractors	
4001 Grant - Community Access Program	\$ 25,000
5115 Land & Building Improvement - Design/Pre-Construction	
CEQA Studies	\$ 165,000
Engineering	\$ 75,000
Contingency	\$ 50,000
SUBTOTAL C, Consultants and Contractors:	\$ 315,000
Grand Total (A+B+C):	\$ 500,000