

**SANTA MONICA MOUNTAINS CONSERVANCY
GRANT APPLICATION**

Project Name: Tuna Canyon Detention Station Visitors Serving Facilities PP&D Project	Amount of Request: \$ 25,000		
Applicant Name: Mountains Recreation and Conservation Authority	Total Project Cost: \$ 35,000		
	Matching Funds: \$ 10,000		
	Lat/Long: 34°14'2.35"N, 118°16'20.52"W		
Applicant Address: 570 West Avenue 26, Suite 100 Los Angeles, CA 90065	Project Address: 6433 La Tuna Canyon Road		
	County	Senate District	Assembly District
	Los Angeles	25	39
Phone: 310-589-3230 ext. 121	Tax ID: 77-0112367		
Email: Chad Christensen			

Grantee's Authorized Representative:

Tim Miller, Deputy Executive Officer <i>Name and Title</i>	323-221-9944 ext. 202 <i>Phone</i>
---	---------------------------------------

Overhead Allocation Notice:

- ✓ Any overhead costs will be identified as a separate line item in the budget and invoices.
- ✓ The Conservancy encourages grantees to reduce overhead costs including vehicle and phone expenses.
- ✓ The overhead allocation policy has been submitted prior to or with the grant application.

All check boxes must be checked


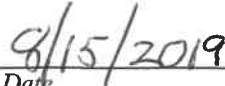
Project Description:

The proposed Proposition 68 project will plan and design visitor serving facilities on both to-be-dedicated and to-be-acquired open space within the now closed Verdugo Golf Course in Tujunga. The primary focus of the facilities is to interpret the former Tuna Canyon Detention Station that is recognized by the City of Los Angeles as Historic-Cultural Monument (HCM) Site No.1039. HCM No. 1039 commemorates the imprisonment of Japanese, German and Italian immigrants and extradited Japanese Peruvians during World War II at the Tuna Canyon Detention Station (TCDS). The MRCA will hold fee title to the subject open space which will range in size from 2.9 to 6 acres based on available acquisition funding. The project focuses on the core 2.9 acres which are assured to be public open space. The project will integrate TCDS Coalition input to maximize community engagement with the park and provide a public space to reflect on history and place.

Tasks / Milestones: Serving Facilities Design Plan	Budget: \$ 35,000	Completion Date November 29, 2019
--	-----------------------------	---

For Acquisition Projects: APN(s): N/A
Acreage: N/A

I certify that the information contained in this Grant Application form, including required attachments, is accurate.

	
<i>Signature of Authorized Representative</i>	<i>Date</i>

Proposition 68 Competitive Grant Application
Tuna Canyon Detention Station Visitors Serving Facilities PP&D Project

NARRATIVE

The Mountains Recreation and Conservation Authority (MRCA) requests \$25,000 of Proposition 68 grant funding for Project Planning and Design of visitor serving facilities on the former Tuna Canyon Detention Station in Tujunga along the Verdugo Wash tributary of the Los Angeles River.

Description of Project Area

The proposed Proposition 68 project will plan and design a visitor serving facilities template on both to-be-dedicated and to-be-acquired open space within the now closed Verdugo Golf Course in Tujunga. The primary focus of the facilities is to interpret the former Tuna Canyon Detention Station that is recognized by the City of Los Angeles as Historic-Cultural Monument (HCM) Site No.1039 with a natural community park setting. HCM No. 1039 commemorates the imprisonment of Japanese, German and Italian immigrants and extradited Japanese Peruvians during World War II at the Tuna Canyon Detention Station (TCDS). The remainder of the site is under control of Snowball West which has a proposed tract map over majority of the subject property. The tract map conditions require a dedication of over 30 acres of open space to the MRCA. A MOA with Snowball West provides for the MRCA to acquire additional sections (see attachment) of open space that enhance the HCM after the tract map is approved. The subject visitor serving facilities template should help efforts to seek additional acquisition funding for more sections of the tract map.

BUDGET

This Project grant request to the Conservancy's Proposition 68 Grant Program is for a total of \$25,000.

Matching funds from the MRCA in the amount of \$10,000 will contribute to the proposed Project budget.

Combined, the total budget for the proposed Project is \$35,000.

TIMELINE

The proposed grant expenditures will be completed by November 30, 2019.

RESPONSE TO EVALUATION CRITERIA

The Project achieves multiple purposes of Proposition 68 per Public Resource Code Section 80001(b) and several Strategic Goals and Common Ground principles of the Conservancy.

Prioritization Value

Project achieves 80001(b)(4) by providing urban recreation and protecting or restoring natural resources.

The Project will provide a spatial template to transform disturbed coast live oak woodland, abandoned turf grass, and an asphalt parking lot into a community park. The community park will feature at least one primary interpretive area for the TCDS in combination with the Historic Cultural Monument. The design process will determine how to spread out or concentrate such interpretive resources. The minimum park size is 2.9 acres and could be as large as 7 acres. The proposed project will concentrate on the 2.9-acre core area that is guaranteed to be permanently protected with the development of adjacent Tentative Tract Map No. 69976.

The community park will have multiple trails and seating areas. Because a majority of the site is heavily disturbed, it has vast potential for reforestation with coast live oaks and California sycamores. Also because of the disturbance and gentle slopes for sheet flow, the site is optimal for features to passively capture and infiltrate surface flows.

Project achieves 80001(b)(5) by providing workforce education and training, contractor, and job opportunities for disadvantaged communities.

The project in its PP&D phase does not achieve these objectives but in its implementation phase it will achieve these objectives.

Project achieves 80001(b)(6) by having already obtained all required permits and entitlements.

As a PP&D project, the project is not advanced enough to seek any required permits or entitlements; however, the MRCA has the authority to use its land, conduct restoration, erect interpretive displays, arrange signage, and use existing parking without any new permits or entitlements. In short, the project most likely will not require any permits or entitlements.

Project achieves 80001(b)(9) – advances solutions to prevent displacement if a potential unintended consequence associated with the project is an increase in the cost of housing.

The project does not have the potential to increase the cost of housing.

Proposition 68 Competitive Grant Application
Tuna Canyon Detention Station Visitors Serving Facilities PP&D Project

Project achieves three or more actions listed in 80001(b)(8)(A through G).

- A. The project's work to date to actively reach out to diverse populations to increase community awareness about the opportunity for a unique combined historical, cultural, and recreation site has been significant. That outreach will continue and expand to address a message most relevant in the United States at this time.

- C. The project creates a unique public – private partnership between the MRCA and the TCDS Coalition which represents diverse populations.

- E. The non-personnel interpretation of the TCDS experience and environment expands the use culturally important materials in public communications for diverse populations about a subject event that has poignant lessons for the United States with its currently divided and fractured populous.

Project achieves more than one of the Conservancy's Strategic Objectives.

The project facilitates many aspects of the Conservancy's Strategic Objectives. The project is scoped to restore and enhance key Southern California open space. It creates a park with its own trails that is connected to other open space parkland, and it is easily accessible to general public.

Project achieves more than one of the Common Ground guiding principles.

The project facilitates both the expansion and recreational access to public open space. It further improves habitat quality and serves to connect to an open space trail network.

Category Value

The project will provide benefits to multiple values including water, recreation, habitat, and interpretation of natural resources.

The high level of existing disturbance to the project site and its gentle sloping terrain provide an optimal template for storm water retention, habitat restoration (reforestation), walking paths, and interpretation of the Verdugo Wash tributary system (Las Barras Creek and Verdugo Wash).

The project implements a major component of an existing relevant plan related to a major recreational facility, regional ecosystem restoration, or master land protection plan.

N/A

Proposition 68 Competitive Grant Application
Tuna Canyon Detention Station Visitors Serving Facilities PP&D Project

The project provides a plan or feasibility study to advance cooperative watershed health protection activities or recreation goals important to two or more organizations.

The project provides a plan to improve a section of the Verdugo Wash watershed both through direct habitat restoration and increased groundwater infiltration. Multiple recreation elements would also be added. These goals are important to the Conservancy, VOICE, and the City of Los Angeles.

Applicant has a realistic plan for serving disadvantaged communities upon completion of the improvements.

Although the site does not abut disadvantaged communities, it is easily accessible by street or freeway and supports rare gentle terrain in a foothill setting.

The project uses renewable or non-potable water sources of water, such as reclaimed water, captured stormwater, or other method.

The gentle terrain on the project site combined with extensive existing ground disturbance provide optimal elements to design in fully passive stormwater capture features into the grading and drainage plan.

Project implements Best Management Practices (BMP) to treat stormwater.

The plans and designs produced by the project will maximize implementation of BMPs to treat stormwater onsite and perhaps seek storm water from offsite.

Project provides safe and reliable drinking water supplies to park and open space visitors.

The project site is where the visitor facilities were for the Verdugo golf course. The proposed project will be designed to provide potable drinking water from the Los Angeles Department of Water and Power. It will also enhance recharge of affected aquifer related to the Los Angeles River watershed.

The project provides a high quality access point for nearby open space, parkland, regional multi-modal trails, or water-based recreation.

The project will provide a staging area for a trail along the Verdugo Wash that in turn will connect to a greater than 30-acre open space dedication from VTT Map No. 69976 with a trail that will lead to existing MRCA-owned open space that is contiguous with the core habitat of the Verdugo Mountains located north of the 210 freeway. An attached figure shows this complete trail system.

The project completes a new, significant link in a regional trail system.

The project will provide both a staging area and new link or spur to the Rim of the Valley Trail Corridor via a trail segment along the Verdugo Wash (and/or within the new tract)

Proposition 68 Competitive Grant Application
Tuna Canyon Detention Station Visitors Serving Facilities PP&D Project

that in turn will connect to a greater than 30-acre open space dedication from VTT Map No. 69976 with a trail that will lead to existing MRCA-owned open space that is contiguous with the core habitat of the Verdugo Mountains located north of the 210 freeway. An attached figure shows this complete trail system.

Project adds new trail or recreational resources not available within a 0.5 mile radius.

The project clearly adds both a new trail and a recreational resource not available within a 0.5 mile radius.

The project contains multi-modal accommodations that will benefit hikers, cyclists and equestrians.

All project trails will be multi-use.

The project results in new public access to a natural resource with high interpretive and/or educational value, or enhances existing access.

The project will provide a staging area with trails for a unique gentle terrain area with existing coast live oak woodland. Parking will be included. The gentle terrain of the former golf course, parking lot, and driving range will make for trails with great access by all abilities.

The project provides non-personal interpretive elements that will significantly enhance appreciation and enjoyment of a natural resource.

A major component of the project is non-personal interpretive elements that will focus on the TCDS in this unique mountain environment close to downtown Los Angeles. Those elements with tie in the natural resources including the Los Angeles River tributaries within or abutting the site.

The project creates a new venue, or enhances an existing venue, for education and/or interpretation activities that promote natural resources stewardship.

The project will provide a staging area with trails for a unique gentle terrain area with existing coast live oak woodland. Parking will be included. The gentle terrain of the former golf course, parking lot, and driving range will make for trails with great access by all abilities. A major component of the project is non-personal interpretive elements that will focus on the TCDS in this unique mountain environment close to downtown Los Angeles. Those elements with tie in the natural resources including the Los Angeles River tributaries within or abutting the site.

The project alleviates stress on other overburdened recreational resources within a 0.5 mile radius.

N/A

Proposition 68 Competitive Grant Application
Tuna Canyon Detention Station Visitors Serving Facilities PP&D Project

The project provides a new vista point or overlook for a significant scenic viewshed.

N/A

The project adds visitor-serving amenities, accessibility, and public safety improvements to existing parkland.

The project will provide a staging area with trails for a unique gentle terrain area with existing coast live oak woodland. Parking will be included. The gentle terrain of the former golf course, parking lot, and driving range will make for trails with great access by all abilities. The plan will include seating, drinking water, and post and rail fencing to keep visitors away from roads.

Project results in additional uses for users of a wide range of ability levels.

The project will provide a staging area with trails for a unique gentle terrain area with existing coast live oak woodland. Parking will be included. The gentle terrain of the former golf course, parking lot, and driving range will make for trails with great access by all abilities. The plan will include seating, drinking water, and post and rail fencing to keep visitors away from roads. The terrain and parking (existing) provide ample opportunity for ADA accessible pathways of considerable length.

The project is designed to accommodate the needs of users from a variety of cultural and economic backgrounds.

The project will be designed to accommodate the needs of users from a broad variety of cultures and economic backgrounds. The nucleus of the project is Historic Cultural Monument (HCM) which addresses the discrimination of distinct sets of American residents via incarceration in the TCDS. The feeling of equality and welcoming of all will permeate the project design.

The project includes restoration, protection or enhancements of a native ecosystem appropriate to the site.

The project includes the design to restore new clusters of coast live oak woodland and to enhance existing oak woodland. Swales for surface water retention will create large micro-sites for unique native flora.

Project will benefit specially protected species pursuant to the California Wildlife Protection Act of 1990.

The project will enhance habitat with connectivity to the Verdugo Mountains core habitat. The Verdugo Mountains support a few mountain lions.

Proposition 68 Competitive Grant Application
Tuna Canyon Detention Station Visitors Serving Facilities PP&D Project

The project employs new or innovative technology or practices.

N/A

Implementation Value

Applicant has proven that implementation of the project is feasible.

The HCM has already been approved by the Los Angeles City Council. The MRCA has an agreement with Snowball West the developer of the subject VTT Map to acquire different phases of the subject property based on available funding (see attached phase map). The 5th Supervisorial District has long set aside funding for the MRCA to acquire a portion of the Verdugo golf course property. The exiting golf course facilities and the consent of the current landowner show that improvements are feasible.

Applicant has financial capacity to perform project on a reimbursable basis.

The MRCA has \$9 million annual operations budget and a \$3 million credit line.

Applicant, or active project partner, has successfully completed multiple projects of similar size and scope.

The MRCA has designed and improved scores of parks in Los Angeles County.

The project is a partnership between two or more organizations and each organization has committed to contributing toward project implementation.

The project is a partnership with the TCDS Coalition and the MRCA. The Coalition has shown stout commitment to completing the project in concert with the MRCA.

Applicant has conducted outreach to the affected communities.

The TCDS Coalition and VOICE have conducted extension outreach to the immediately affected neighborhoods over the course of almost a decade. The local Neighborhood Council is clearly on record expressing a desire for the largest possible area of parkland on the site.

Applicant, or project partner, has 1+ years' experience maintaining and operating projects of similar size and scope.

The MRCA has over 30 years of experience maintaining a broad variety of public parks.

Applicant has identified maintenance funding for at least 2 years after completion.

The MRCA's agreement with landowner Snowball West provides for in perpetuity maintenance funding from the approved tract's HOA. The minimum amount is \$25,000

Proposition 68 Competitive Grant Application
Tuna Canyon Detention Station Visitors Serving Facilities PP&D Project

annually with up to \$35,000 annually if the MRCA is able to acquire additional tract map lands via the MOA provisions.

Project has approval from all landowners to complete the project, or Applicant is the landowner.

The MRCA's agreement with the landowner Snowball West provides pre-approval of the proposed visitor serving facilities and the MRCA will have fee simple ownership of the land before any improvements are constructed.

Climate Change Value

The project demonstrates a reduction in baseline greenhouse gas emissions through carbon sequestration or other innovative techniques or project designs, such as diverting organic material from landfills.

The project will reduce baseline greenhouse gas emissions via the planting of scores of coast live oak trees.

The project implements water saving technologies and techniques to yield quantifiable water and energy savings. Such techniques may include the use of drought-efficient landscaping, including climate resilient and native landscaping whenever possible, stormwater filtration, impervious surfaces, green roofs and other forms of water capture and storage.

The project will 100 percent use native drought tolerant landscaping and new landforms to maximize stormwater infiltration.

The project contributes to tree canopy cover and/or greenways in urban areas to mitigate heat island effects and promote public health and recreation.

The project integrates the planting of scores of native coast live oak trees to mitigate heat island effects and to promote both public health and recreation.

The project develops or maintains multi-use trails that connect communities, provides access to public resources and reduces vehicle miles traveled.

N/A

The project engages local communities through outreach, education, and interpretation regarding long-term stewardship and climate change awareness.

The project engages local communities by interpreting a unique cultural event (TCDS) in the area that has poignant lessons for the United States with its currently divided and fractured populous. The use of swales and extensive oak tree planting will reflect the importance of land stewardship and how disturbed lands can be reclaimed.

Proposition 68 Competitive Grant Application
Tuna Canyon Detention Station Visitors Serving Facilities PP&D Project

The project implements water saving techniques that utilize nature-based solutions like wetlands, rain gardens, swales, berms, curb cuts with parkway basins, infiltration trenches, vegetation, tree planting, stream daylighting/restoration, and floodplain reclamation.

The project takes advantage of gentle, disturbed terrain to maximize the use swales and berms to retain water onsite. The project involves the planting of scores of coast live oak trees.

Additional Consideration

The site is subject to imminent threat that would preclude future implementation value.

Most of the project is in imminent threat of development if the MRCA cannot find additional land acquisition dollars. The core 2.9 acres of the site is secure.

Project utilizes a local job training entity for a portion of the work.

N/A

Project is within 0.25 miles of public transportation.

N/A

Project serves a disadvantaged community.

N/A

Project serves a severely disadvantaged community.

N/A

Proposition 68 Competitive Grant Application
Tuna Canyon Detention Station Visitors Serving Facilities PP&D Project

Summary Visitor Serving Development and Improvement Projects Rating

Prioritization Value.

Category Value.

Implementation Value.

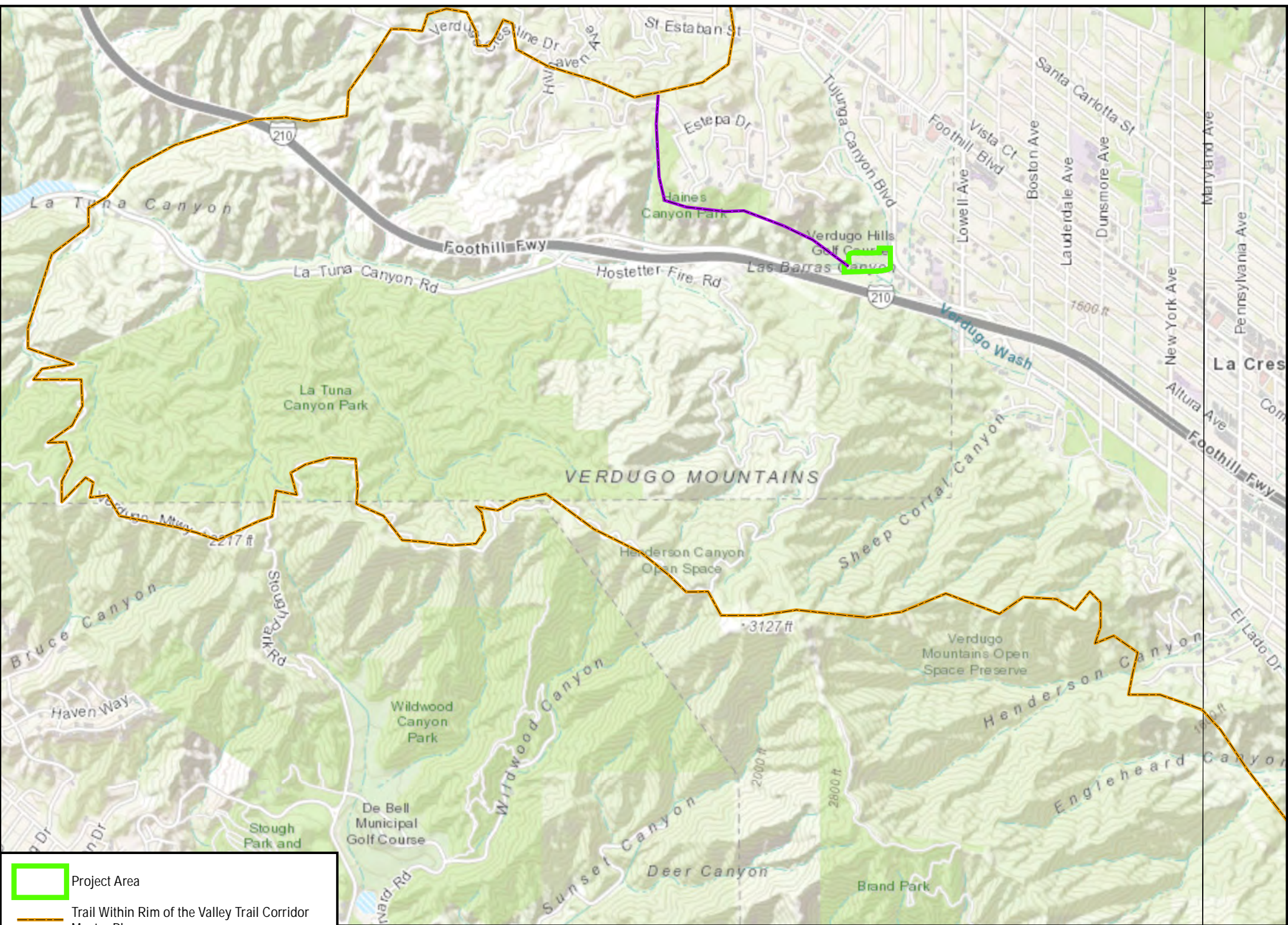
Climate Change Value.

Additional Consideration.

MATCHING FUNDS WEIGHTING

Matching funds from the MRCA of \$10,000 will contribute to the proposed Project budget.

Combined, the total budget for the proposed Project is \$35,000.

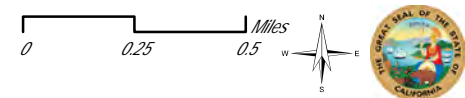


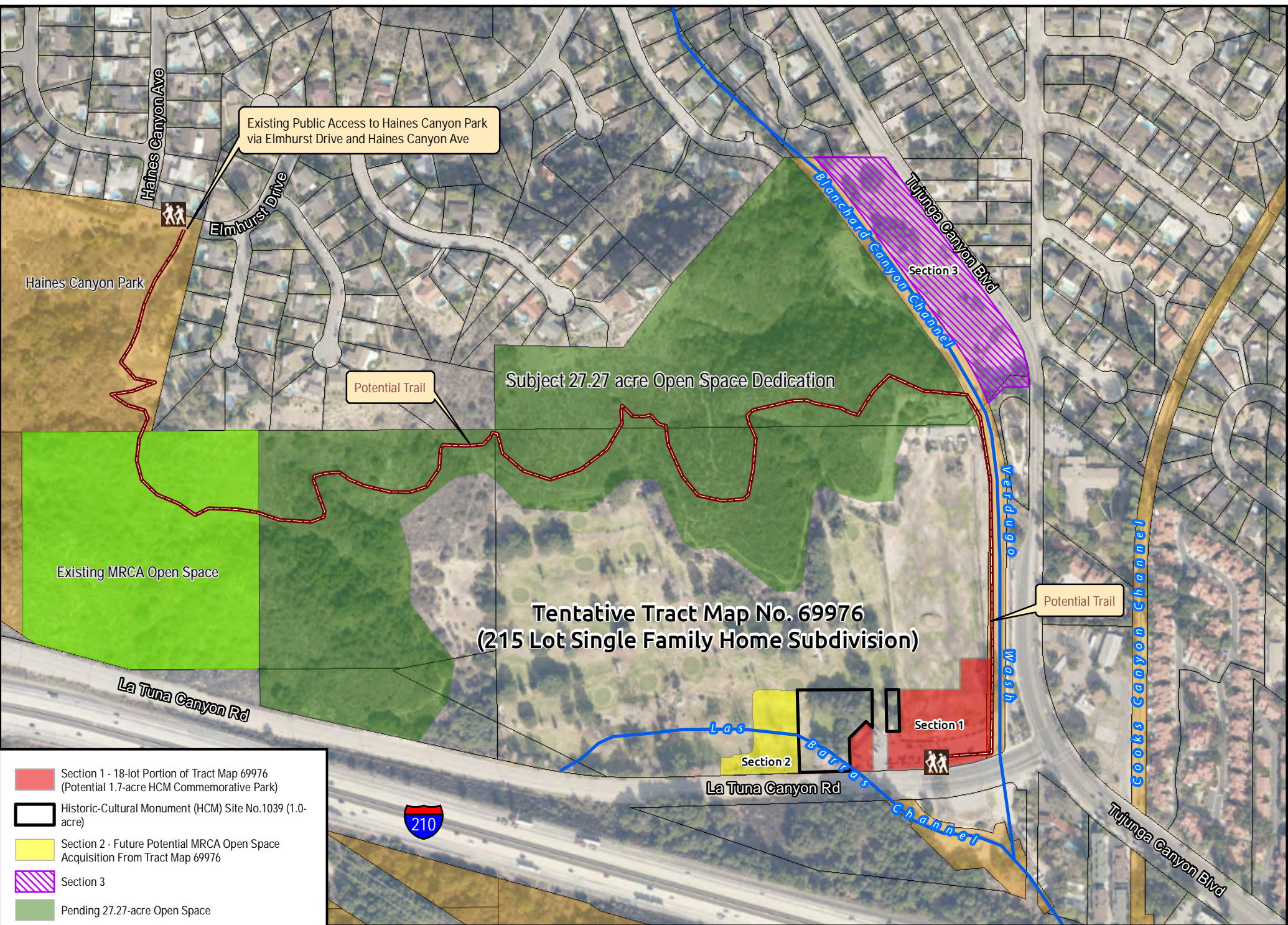
Project Area

Trail Within Rim of the Valley Trail Corridor Master Plan

Trail Spur (concept)

Tuna Canyon Detention Station Acquisition Project
Vicinity Map



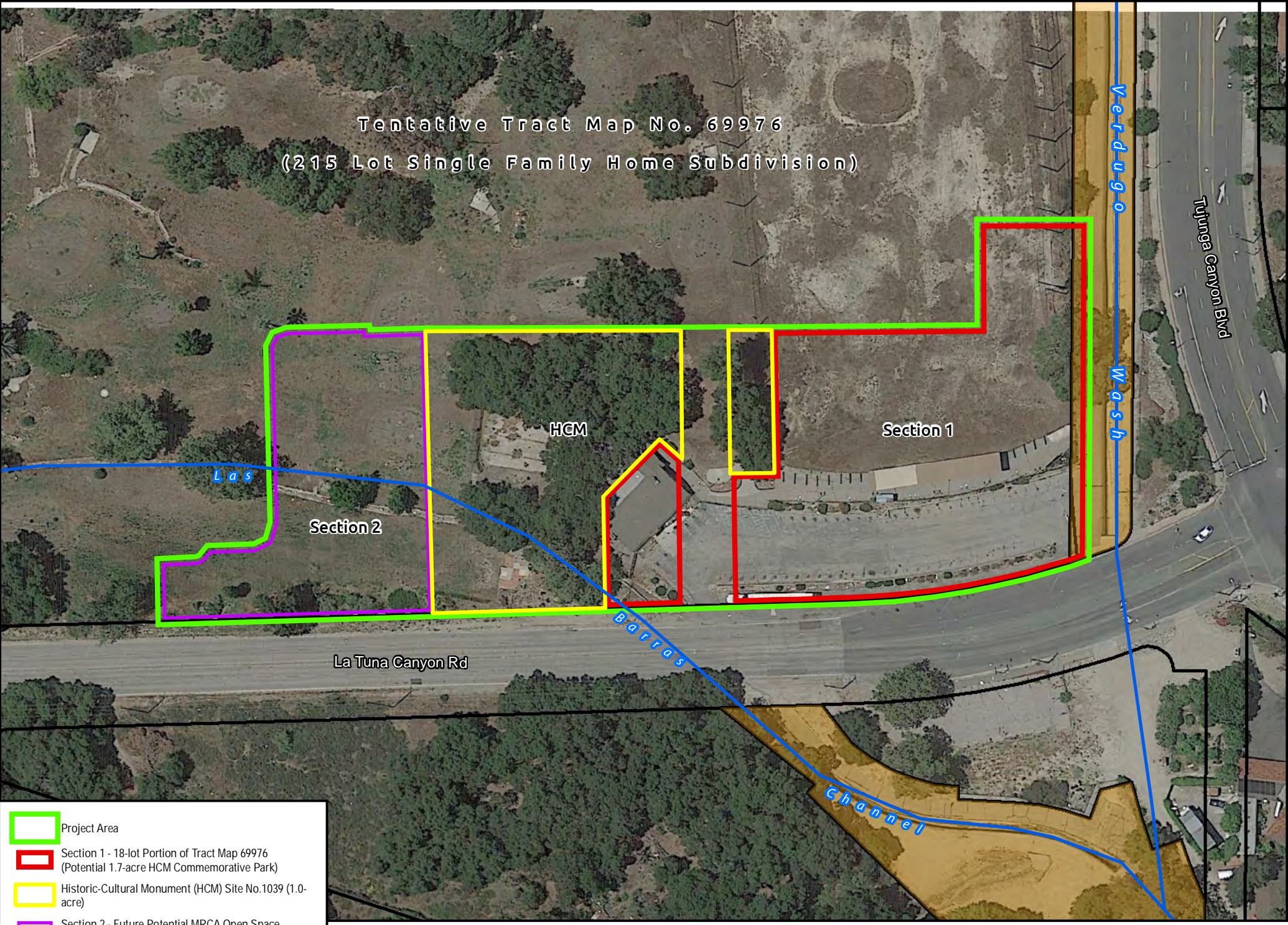







**Tentative Tract Map No. 69976
(215 Lot Single Family Home Subdivision)**

- Section 1 - 18-lot Portion of Tract Map 69976 (Potential 1.7-acre HCM Commemorative Park)
- Historic-Cultural Monument (HCM) Site No.1039 (1.0-acre)
- Section 2 - Future Potential MRCA Open Space Acquisition From Tract Map 69976
- Section 3
- Pending 27.27-acre Open Space
- SMMC MRCA Owned/Managed Property
- Other Public Land

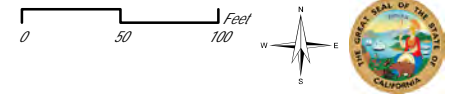
Tuna Canyon Detention Station Acquisition Project
Site Plan Map

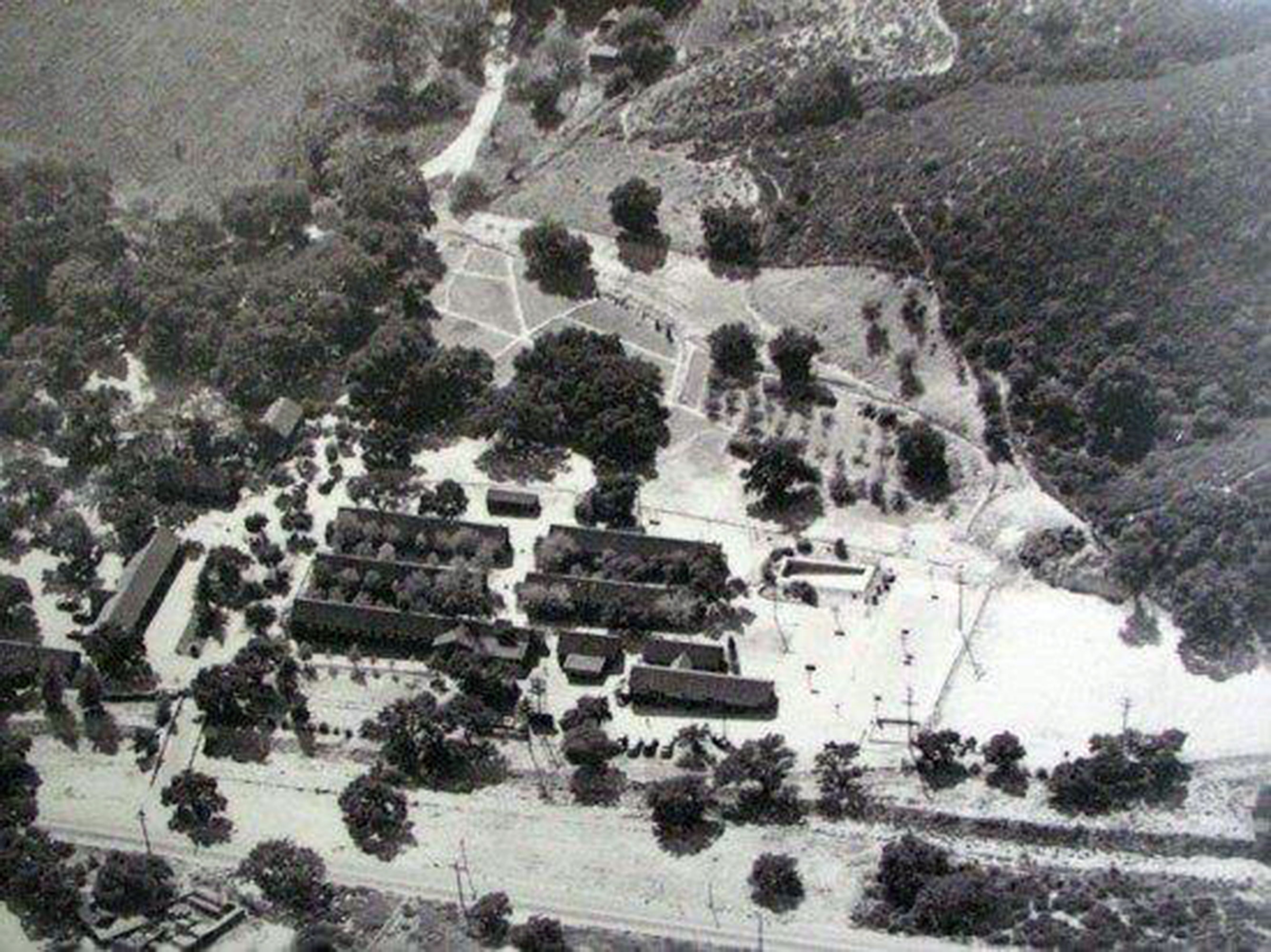
Tentative Tract Map No. 69976
(215 Lot Single Family Home Subdivision)

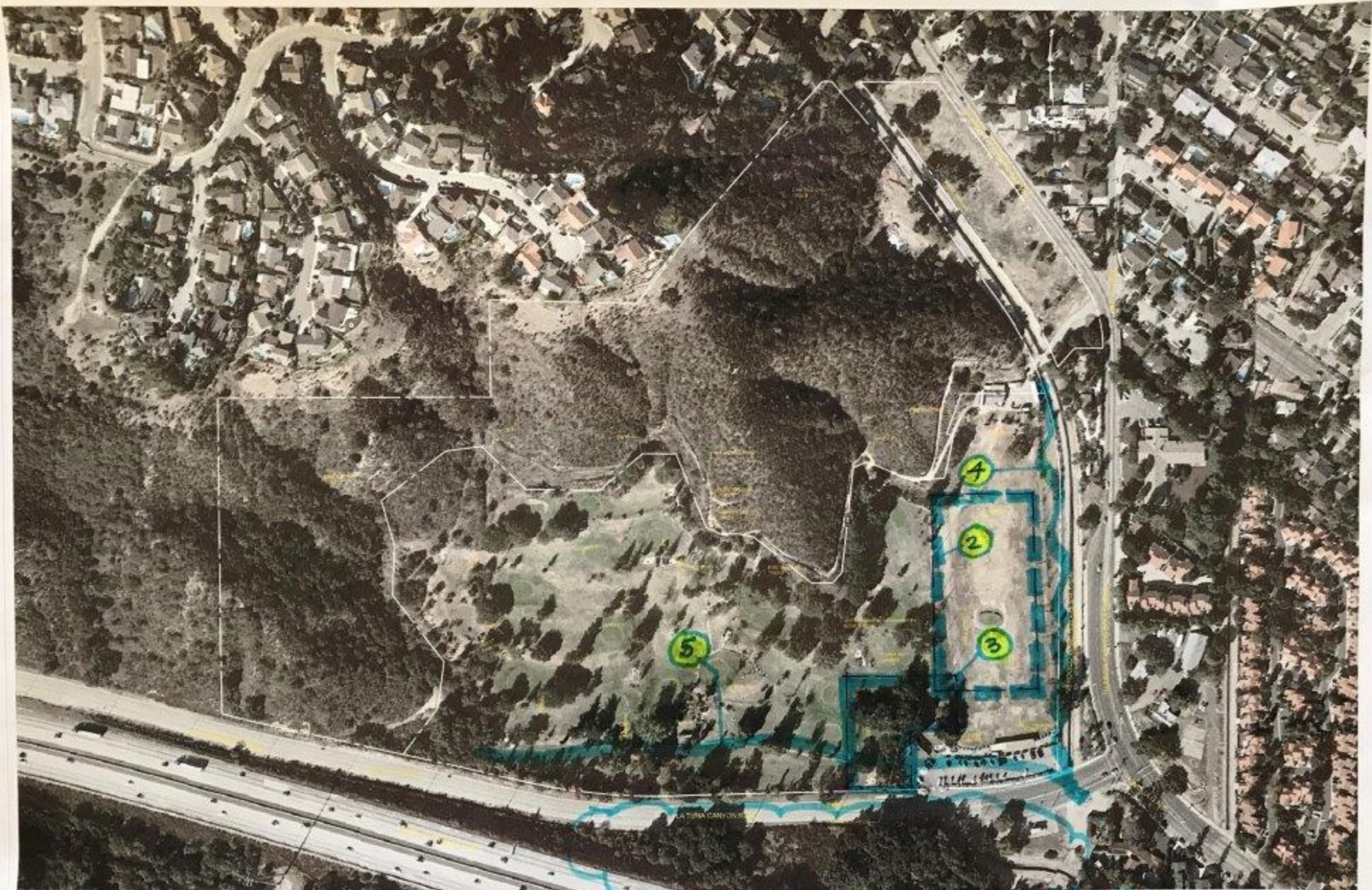


-  Project Area
-  Section 1 - 18-lot Portion of Tract Map 69976 (Potential 1.7-acre HCM Commemorative Park)
-  Historic-Cultural Monument (HCM) Site No.1039 (1.0-acre)
-  Section 2 - Future Potential MRCA Open Space Acquisition From Tract Map 69976
-  Public Land

Tuna Canyon Detention Station Acquisition Project
Site Plan Map







5

4

2

3

1

LA TIERRA CANYON

As bombs fell on Pearl Harbor, there would be no looking back. The world was at war. The FBI and other law enforcement officials implemented their pre-war plans to arrest and imprison Japanese, German, and Italian immigrant leaders in Hawaii. Arrests began on the U.S. mainland by nightfall. In Southern California, these individuals were taken to local jails and then transferred to detention facilities like Tuna Canyon Detention Station, located about 14 miles north of downtown Los Angeles.

THEIR STORY

Because of prewar agreements with the U.S. government, arrests of Japanese, German, and Italian immigrants also began in Latin America. Over 200 Latin Americans, mostly Japanese from Peru, would eventually be taken through the gates of Tuna Canyon Detention Station.

It would receive its first detainees on December 16, 1941, and processed its last in October of 1943.



*We must learn from history
that this should
never happen again*



An exhibition by
TUNA CANYON
DETENTION STATION COALITION

THE EXHIBIT WAS FUNDED, IN PART,
BY A GRANT FROM THE U.S. DEPARTMENT OF
THE INTERIOR, NATIONAL PARK SERVICE,
JAPANESE AMERICAN COMPENSATION SITES
GRANT PROGRAM.

Tuna Canyon Detention Station Coalition
is an educational non-profit.

This deductible donation may be made out to:

TCDSG
c/o San Fernando Valley
Japanese American Community Center,
12953 Brandford Street, Pacoima CA 91331
or online at www.tunacanyon.org
Email: remember@tunacanyon.org

Additional information is available via QR codes
throughout the exhibit from a device
or at www.tunacanyon.org by tapping
Digital History or Oral History.

© 2016
Tuna Canyon Detention Station Coalition.
All Rights Reserved.

ONLY THE OAKS REMAIN

The Story of
TUNA CANYON DETENTION STATION



The Tuma Canyon Detention Station exhibition opens with a plaque that will be installed at this historic site. The plaque contains the following words:

The beauty of an oak grove in Tujunga, California, belies a tragic history. At the beginning of World War II, the U.S. Department of Justice turned Civilian Conservation Corps Camp 902 into the Tuma Canyon Detention Station by enclosing it with barbed wire and posting armed guards.

THIS WAS THEIR STORY

From December 1941 to October 1943, Japanese, German, and Italian immigrants, Japanese taken from Peru, and others were imprisoned here in violation of their civil liberties.

On June 25, 2013, the Los Angeles City Council designated this site as a Los Angeles Historic-Cultural Monument. The oaks, as witnesses to history, compel us to learn from our nation's mistakes and stand strong against prejudice, wartime hysteria, and injustice.

Only The Oaks Remain is an experiential presentation of World War II history that took place in Los Angeles County.

It has been created by a dedicated group of volunteers, the Tuma Canyon Detention Station Coalition, many of whom have family connections to the events described.

The Coalition's purpose is to protect and memorialize this wartime confinement site.

Tuma Canyon Detention Station coalition is proud to present the Tuma Canyon Detention Station Honor Roll, the centerpiece of the exhibition.

Over 2,000 names of detainees who passed through Tuma Canyon Detention Station are displayed. Most of these individuals were later transferred to Immigration & Naturalization or Army internment camps. Some were eventually involved in exchanges with Axis nations for American prisoners of war.

We are dedicated to our mission to present a complete detainee list. If after visiting you have information about missing names, please contact remembertunacanyon@gmail.com.

This exhibition is presented in sections that deal with the following four important questions*

What Was Tuma Canyon Detention Station?

An exploration of the physical site is presented through photographs provided by the family of Officer-in-Charge Merrill Scott, a virtual tour narrated by George Takei, and a diorama that displays each building and its function.

How Was Detention/Internment Even Possible?

The exhibition explains why these immigrants were arrested and detained/interned and provides details about the vast scale of all the government's wartime imprisonment activities.

Who Was At Tuma Canyon Detention Station?

Biographies are presented of representatives of the Tuma Canyon Detention Station community including Officer-in-Charge Merrill H. Scott, Reverend Herbert Nicholson, Reverend Deisho Tana, Dr. Eugen Barzhaq, Cesare Grimaldi, Heigoro Endo, Kishiro Hayashi, Nikuma Tanouye, and his son Technical Sergeant Ted Tanouye.

What Was It Like Being An Enemy Alien?

The exhibition presents an evocation through poetry, diaries, letters, and oral and written histories of what it was like to be an enemy alien.

*Smaller venues may not be able to accommodate all sections of the exhibit

