



COUNTY OF LOS ANGELES DEPARTMENT OF PARKS AND RECREATION

TRAILS LA COUNTY EXPANSION: EQUITY, INCLUSION AND WATERSHED EDUCATION PROJECT



Photo: Black Girls Trekkin'

**GRANT PROPOSAL
PROPOSITION 1 GRANT PROGRAM
SANTA MONICA MOUNTAINS CONSERVANCY
AUGUST 6, 2020**



COUNTY OF LOS ANGELES DEPARTMENT OF PARKS AND RECREATION

TRAILS LA COUNTY EXPANSION: EQUITY, INCLUSION AND WATERSHED EDUCATION PROJECT

- TABLE OF CONTENTS -

Application Form	1 - 2
Response to Grant Application Requirements — ‘All Other Improvements Projects’	3 - 30
Tasklist and Timeline	31
Trails LA County Expansion Map	32
Overhead Allocation Notice Requirement	33

**SANTA MONICA MOUNTAINS CONSERVANCY
GRANT APPLICATION**

Project Name: Trails LA County Expansion: Equity, Inclusion and Watershed Education	Amount of Request: \$500,000						
	Total Project Cost: \$1,000,000						
Applicant Name: County of Los Angeles Department of Parks and Recreation	Matching Funds: \$500,000 Lat/Long: Multiple- Santa Monica Mountains Conservancy jurisdiction						
Applicant Address: 1000 S. Fremont Ave. Unit 40 Alhambra, CA 91803	Project Address: Multiple- Santa Monica Mountains Conservancy jurisdiction						
	<table border="1"> <thead> <tr> <th>County</th> <th>Senate District</th> <th>Assembly District</th> </tr> </thead> <tbody> <tr> <td>Los Angeles</td> <td>18, 21, 24, 25, 26, 27</td> <td>36, 38, 39, 41, 43, 44, 45, 46, 50, 51</td> </tr> </tbody> </table>	County	Senate District	Assembly District	Los Angeles	18, 21, 24, 25, 26, 27	36, 38, 39, 41, 43, 44, 45, 46, 50, 51
	County	Senate District	Assembly District				
	Los Angeles	18, 21, 24, 25, 26, 27	36, 38, 39, 41, 43, 44, 45, 46, 50, 51				
Tax ID: 95-6000927							
Phone: (626) 588-5249 Email: avona@parks.lacounty.gov							

Grantee's Authorized Representative: (626) 588-5322
 Alina Bokde, Deputy Director, Planning and Development
Name and Title *Phone*

- Overhead Allocation Notice:**
- Any overhead costs will be identified as a separate line item in the budget and invoices.
 - The Conservancy encourages grantees to reduce overhead costs including vehicle and phone expenses.
 - The overhead allocation policy has been submitted prior to, or with, the grant application.
- Outreach and Advertising Requirement:**
- Applicant has read the staff report and board resolution regarding contract policies.
 - Applicant has adopted contract policies for the purpose of increasing outreach and advertising to disadvantaged businesses and individuals.
- All check boxes must be checked*

Brief Project Description:
 The Project scope of work will consist of variety of key initiatives aimed at expanding the scope and utility of the Trails LA County platform; supporting statewide goals related to public education on watershed and water supply issues; strengthening the platform's usefulness and representation to reflect the diverse culture and interests of the region; and engaging strategic community partners and at-risk youth as part of the project team.

The outcome of the Project will be a comprehensive and integrated digital resource for trail users that serves to advance and encourage innovative collaborations with Cities and Agencies throughout the County of Los Angeles to showcase all of the estimated 2000+ miles of official public trails throughout the County. In addition, the project will create a more equitable and inclusive platform through representation and partnerships of diverse outdoor recreation and trail-user groups as well as provide equitable access for very high-need and high-need

communities to our countywide trails and parklands. Ultimately, the projects seeks to encourage connection to natural landscapes as a means for recreation, and to also foster a sense of investment in the conservation and protection of trails and public parklands.

*attach additional pages with project detail

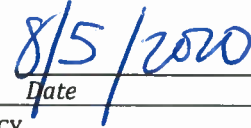
Tasks / Milestones:	Budget:	Completion Date
1 Data & Content Expansion	\$250,000	12/31/2023
2 Watershed Education Program	\$50,000	12/31/2022
3 Inclusion & Access Enhancements	\$50,000	12/31/2022
4 Marketing & Outreach	\$75,000	12/31/2023
5 Workforce Development	\$75,000	03/31/2022

See attached timeline for full details.

For Acquisition **APN(s):** N/A
Projects:
Acreage: N/A

I certify that the information contained in this Grant Application form, including required attachments, is accurate.





Signature of Authorized Representative

Date

STATE OF CALIFORNIA ♦ THE NATURAL RESOURCES AGENCY

RESPONSE TO GRANT APPLICATION REQUIREMENTS

1. A detailed scope of work, including a list of specific tasks, a detailed budget, and a timeline for project implementation (including a completion date for each task);

PROJECT DESCRIPTION

The County of Los Angeles Department of Parks and Recreation (County DPR) is requesting a grant from the Santa Monica Mountains Conservancy (SMCC) Proposition 1 funds (All Other Improvements Category) in the amount of \$500,000 for the Trails LA County Expansion Project (Project).

The Project scope of work will consist of variety of key initiatives aimed at expanding the scope and utility of the Trails LA County platform; supporting statewide goals related to public education on watershed and water supply issues; strengthening the platform's usefulness and representation to reflect the diverse culture and interests of the region; and engaging strategic community partners and at-risk youth as part of the project team.

The outcome of the Project will be a comprehensive and integrated digital resource for trail users that serves to advance and encourage innovative collaborations with Cities and Agencies throughout the County of Los Angeles to showcase all of the estimated 2000+ miles of official public trails throughout the County. In addition, the project will create a more equitable and inclusive platform through representation and partnerships with diverse outdoor recreation and trail-user groups as well as expand access for under resourced communities to our countywide trails and parklands. Ultimately, the project seeks to encourage connection to natural landscapes as a means for recreation, and to also foster a sense of investment in the conservation and protection of trails and public parklands.

The Project scope will focus on the following five primary goals:

- **Data & Content Expansion**

The current utility of Trails LA County is limited by the fact that it does not provide information on all of the 2,000+ miles of trails throughout the County. The objective is to create a complete informational resource for all the trails countywide to meet user needs and expand access to valuable recreational opportunities.

- **Watershed Education Program**

The Trails LA County platform currently focuses on providing useful and accurate information for authorized public trails, primarily geared towards user access, wayfinding and trail use education. The objective of the enhanced education program is to implement creative and engaging content related to watershed and water supply that advances State goals.

Proposition 1 Grant Application
TRAILS LA COUNTY EXPANSION: EQUITY, INCLUSION AND WATERSHED EDUCATION

- **Enhanced Inclusion & Access**
Similar to the above stated goal for expanded educational information on the platform, there are opportunities to improve the platform with the objective of enhanced inclusion and access. Improvements to linguistic accessibility will be explored, as well as methods of increasing engagement and access to trails for high need communities.
- **Marketing, Communications & Outreach**
Effective marketing, communication and community outreach are critical to achieving the vision of the Trails LA County platform as the “go-to” resource for trails information countywide. The objective is to ensure that the platform is effectively promoted to broaden access and to work extensively with strategic non-profit partner organizations to ensure that prioritized improvements reflect the needs and desires of high need communities.
- **Workforce Development**
The expansion of the platform will rely heavily upon field data collection of trail alignments across the County using GPS mapping software. This portion of the scope of work is a prime opportunity to train and employ at-risk young adults through partnerships with local conservation corps.

BACKGROUND

The Trails LA County platform consists of a dynamic and engaging website and mobile application featuring information on more than 600 miles of public trails spread across diverse landscapes throughout Los Angeles County. Since the launch of the original trails.lacounty.gov website in 2014, the County of Los Angeles Department of Parks and Recreation has remained committed to the enrichment of the platform as a countywide resource based upon the following central goals:

- Serve as the “go-to” online resource for official information on the more than 2,000 miles of public trails throughout Los Angeles County.
- Promote broader access to public trails, particularly for high need communities.
- Develop a comprehensive database for trails countywide for an improved user interface and regional trail planning/connectivity.

The Trails LA County platform features official trail maps, guides and information to connect locals and visitors to the diverse landscapes our region has to offer. It began in 2014 as a standalone website that included detailed information, interactive maps, and photos of 200+ miles of public multi-use trails operated by the County of Los Angeles. It has since grown to become a public resource for authoritative information on more than 600 miles of trails operated by multiple land managing agencies throughout the County, including many partners in the Santa Monica Mountains. Although a solid foundation has been established for Trails LA County, there is a recognized need to expand the platform to showcase the estimated 2000+ miles of official public trails throughout the County regardless of jurisdiction.

Equally as important to this overarching vision of a one-stop resource for countywide trail information, is the creation of a platform that promotes broader access, inclusion and

Proposition 1 Grant Application
TRAILS LA COUNTY EXPANSION: EQUITY, INCLUSION AND WATERSHED EDUCATION

representation of the diversity of the region and the 10 million+ people living in Los Angeles County. Prioritization and emphasis throughout the Project will be placed on addressing the needs of disadvantaged communities by promoting greater access, stewardship, watershed comprehension and advocacy of trails and public parklands. This will include exploring opportunities to enhance linguistic accessibility of the platform. Amid the COVID-19 crisis, the Trails LA County platform has become a critical conduit for information about trail operations and public health protocols, as well as a messaging tool for all trail managers and stakeholders at the Federal, State, and local level. As newspapers, blogs, and media outlets promoted Trails LA County as the “go-to” for public information, visitation to the platform increased more than tenfold. These recent events are one example of how the Trails LA County platform has the potential to become much more than a repository for trail data. The website and app have the potential to serve as a hub and an empowerment tool from which we can address a whole host of initiatives related to equity and access to our trail systems including enhanced language accessibility and culturally relevant educational themes such as watershed education.

The following information details the scope of work required to achieve the five primary goals and objectives for the Project. Please also refer to the attached timeline and budget.

DATA & CONTENT EXPANSION

To create a platform that meets the needs of economically, socially and ethnically diverse Los Angeles County and expands access to valuable recreational opportunities, County DPR will coordinate with cities, conservancies, and federal partners to digitize official trail alignments and verify the accuracy of the information with each respective trail manager. The level of existing documentation of official trail alignments varies greatly by agency and staff capacity. A thorough review of available digital records, paper maps, and interviews with field staff is required to validate the accuracy of the trail information that will eventually be hosted on the Trails LA County platform. Additional GPS equipment, computers, and software may be required for field recording and integration.

Qualitative information about each trail will also be collected, organized, and uploaded by trail name. Content such as detailed trail descriptions, parking information, and relevant tags are also required to complete the profile for each trail on the platform. Additionally, photos that accurately show the character of the trail are immediately useful to users browsing for a specific trail experience. Photos can be obtained through the trail managers themselves, taken during the field assessments, or procured through the public by way of volunteer submissions or photo contests.

Additional improvements to the platform may also be implemented as part of the Project to better support the expansion of the platform and to improve efficiencies. For instance, all the detailed GIS information for trails is currently contained in two independent datasets for the website and mobile app. This requires duplicative efforts for all updates required for trail data and information, and sometimes results in inconsistencies among

Proposition 1 Grant Application
TRAILS LA COUNTY EXPANSION: EQUITY, INCLUSION AND WATERSHED EDUCATION

the data on the website and app. Options to streamline and improve in this area will be evaluated and implemented as possible.

WATERSHED EDUCATION PROGRAM

The Trails LA County platform currently shares information about the flora and fauna found along our trails and is used to share information about meaningful topics such as trail safety during COVID-19, hiking safety, hiking with kids, horses on trails, and sharing the trails. The enrichment of Trails LA County seeks to expand upon educational themes in terms of watershed, water supply, and other key educational themes determined to be critical through our stakeholder outreach process and in consultation with educators. The incorporation of watershed and water supply education will promote the accessibility and comprehension of this information more broadly throughout the region. The intersection of trails and watershed/water supply will offer a new and innovative way to engage the community around these critical topics while encouraging the stewardship of both trails and the environment. Furthermore, it is anticipated that educators will be able to utilize the platform in their classrooms or on the field to support environmental comprehension and educational goals.

The following is a list of potential components of the educational program:

Watershed Data Mapping

Los Angeles County contains six major watersheds, significant areas of coastline, multiple lakes, tributaries, rivers, and creeks. The land uses within the various watersheds of the region are diverse, ranging from designated wilderness areas, open space, and agriculture to dense urban cores. This results in a diversity of issues and concerns stemming from those various land uses. Over the past decade, funding and investments focused on watershed planning, water storage, non-point source pollution mitigation, and stormwater Low Impact Developments have resulted in a variety of stormwater and watershed projects throughout the County. A comprehensive map illustrating the relationships of these various projects in relation to our trail systems, watersheds, and each other has not been made. Having this information on one mapping platform can become a game changing tool for app and website users, educators and planners.

Features of the map may include:

- Watershed and sub-watershed outlines, names, sizes and basic data. In addition, tributaries, rivers, creeks and major waterbodies will also be highlighted to illustrate watershed connections.
- Infrastructure features such as channels, spreading grounds, dams, and reservoirs that manage water adjacent to and along the trails.
- Stormwater LID projects adjacent to and along the trails, possibly with additional background information such as function, year built, lead agency, etc.

Proposition 1 Grant Application
TRAILS LA COUNTY EXPANSION: EQUITY, INCLUSION AND WATERSHED EDUCATION

Featured Content

Featured content posts and/or videos on watershed education will be created to increase understanding, comprehension, familiarity, and vocabulary of the watershed for Los Angeles County Trails users while supporting the stewardship of our trails. Final themes for the posts will be selected through an outreach process with our NGO stakeholders and project partners to determine the most meaningful topics.

Potential themes include:

- What is a watershed?
- What are signs of a healthy watershed?
- How to become a watershed steward?
- Follow the Flow exercise
- Green vs. Gray Infrastructure
- What is Stormwater LID and why is it important?
- How do LID BMPs protect you from floods?
- Flora and Fauna found along our trails and how they support watershed health

Interactive Watershed Game

Create an interactive element that can be accessed for watershed, flora and fauna information while on a trail, with a test your watershed IQ option. The goal of this component is to engage trail users while on the trail or the website to increase their understanding of the watershed, especially while they recreate outdoors.

ENHANCED INCLUSION & ACCESS

There are a variety of potential opportunities to improve the Trails LA County platform to achieve the objective of enhanced inclusion and access, particularly for very high-need and high-need communities. Working closely with strategic community partners, improvements to linguistic accessibility will be explored, as well as methods of increasing engagement and access to trails for underresourced communities. The improvements selected for implementation will be determined by the priorities identified through stakeholder engagement and the available budget. They will likely range in scope and complexity, with some focusing on new content that is representative of the diversity of Los Angeles County, and others requiring more significant functional (programming) improvements to the website and mobile app.

The following is a list of potential improvements to support inclusion and access:

- Expanded linguistic accessibility with priority on Spanish and Mandarin options
- Enhanced location discoverability/visibility for nearby based on the user's location
- More prominent transit to trails discoverability, highlighting nearby public transit locations and hubs
- Improved analytics to better understand user characteristics and trends, as well as

Proposition 1 Grant Application

TRAILS LA COUNTY EXPANSION: EQUITY, INCLUSION AND WATERSHED EDUCATION

peak usage, the most popular trails, most searched trails and features, etc.

- Options for improved user interface and engagement (i.e. a curatorial aspect for diverse user groups, self-posting, meetups, etc.)

MARKETING, COMMUNICATIONS AND OUTREACH

Marketing and communication will include a variety of tasks aimed at increasing the use and diverse representation of Trails LA County. Extensive outreach to underserved communities within the County will be central to these efforts. The County will engage a strategic group of local organizations as subconsultants on the Project team to collaborate, leverage their networks/channels, and expand outreach to ensure equity. Furthermore, the outcome of the stakeholder engagement will yield meaningful interactions with communities that have the greatest need for access to ultimately inform and prioritize the enhancements implemented to the platform as part of the Project.

The following is a preliminary list of associated tasks for marketing, communications and outreach:

- Selection of the Strategic Community Partner Team
- Development of a Marketing, Communications and Outreach Strategy
- Targeted and/or paid advertising via traditional media outlets and/or social media
- A limited term social media/marketing internship position to support initiatives related to outreach, educational program expansion, and enhanced access and inclusion

WORKFORCE DEVELOPMENT

The County will lead the development of a workforce program to accomplish tasks associated with coordinating with partner agencies, GPS field collection of trail data, digitizing trail information, and integrating the content on the platform. The workforce program will strive to employ at-risk young adults through local conservation corps to provide opportunities and skills training to members of our community that could benefit most from the work experience. Volunteers and community groups have also expressed interest in supporting the work of assembling countywide coverage of authoritative trail information.

BUDGET

	Task	Cost Per Task	SMMC Budget	Matching Funds
1	Data & Content Expansion	\$500,000	\$250,000	\$250,000
2	Watershed Education Program	\$100,000	\$50,000	\$50,000
3	Inclusion & Access Enhancements	\$100,000	\$50,000	\$50,000
4	Marketing & Outreach	\$150,000	\$75,000	\$75,000
5	Workforce Development	\$150,000	\$75,000	\$75,000
	TOTAL FUNDED = \$1,000,000		\$500,000	\$500,000

Proposition 1 Grant Application
TRAILS LA COUNTY EXPANSION: EQUITY, INCLUSION AND WATERSHED EDUCATION

TIMELINE

Please see attached timeline.

2. Any preliminary project plans as required;

The Trails LA County platform has been operational since 2014. County DPR has identified the need to review trails owned and managed by other agencies within the County. The Countywide Trails Data Inventory will review existing trail databases and readily available public trail data to identify target agencies, confirm interest, and provide individual scopes and fees for up to six cities or agencies for including their trails on the trails.lacounty.gov website. County DPR consultant, Placeworks, will coordinate with the selected trail-owning/ trail-managing agencies to determine the type, quality, and completeness of their trails data. Individualized scopes and fees will be created that will address refinement or collection trail data, and incorporation into the County's trail geodatabase for inclusion in trails.lacounty.gov.

3. A detailed description of the need and urgency for the grant;

LA County is the largest county in the country with one of the most diverse populations in the world. According to a 2018 report from LA Speaks, nearly one in three residents, or nearly 3.5 million persons, were born outside the United States and a majority of Los Angeles County residents speak a language other than English at home: 38% or 3.3 million speak Spanish and 11% or 925,000 speak an Asian or Pacific Islander language. Additionally, over 2.5 million Los Angeles County residents are limited English proficient. Latinx and Asian American communities face the greatest challenges, with 48% and 43% respectively experiencing some difficulty communicating in English. The result of these linguistic barriers creates significant challenges to accessing critical services such as healthcare, social services including recreational opportunities that can greatly improve quality of life. The expansion of the Trails LA County platform includes improvements to the linguistic capacity and will support the overall goal of inclusion of underrepresented communities and equitable access to public spaces. The proposed enhancement will also provide opportunities for increase diversity of users, specifically in high-needs community. County DPR will develop community outreach strategies in collaboration with various hiking and active recreation groups aimed at bringing more diverse voices to the table to discuss ways to improve their visibility in outdoor recreation and increase community engagement. Additionally, the platform will provide educational opportunities for users to learn about watershed health and habitat restoration by engaging diverse users in the stewardship of trails and parklands.

With so many people looking for outdoor recreational opportunities, the expansion of the Trails LA County website and app could not be timely and more necessary. Currently, there is no resource for a comprehensive map of the trails in Los Angeles County especially one that illustrates the connectivity and relationship between the trails and local watersheds. The website and app only depict a little over 200 miles of the existing 2,000-mile trail network in the County. County DPR has been told that it is extremely difficult for trail users to locate trails near them. This grant would give County DPR the opportunity to create a more comprehensive data set that illustrates the connections

TRAILS LA COUNTY EXPANSION: EQUITY, INCLUSION AND WATERSHED EDUCATION

between various infrastructural and environmental features all while sharing information on watershed health. In addition, this Project will help to identify gaps between existing networks and create synergistic spaces where stakeholders can collaborate during the outreach process to collectively address access and watershed issues and help to guide the direction of the education and outreach components. This commitment to application and iteration can result in direct benefits to the environment and address conservation issues concretely. The Project focus will be on regional issues or locally relevant dimensions of broader issues; collaboration with resource managers, municipal and state agencies, and community organizations. The watershed education component of this Project seeks to develop and enhance watershed comprehension and knowledge, as well as builds skills that prepare individuals and communities to collaboratively undertake positive environmental action.

4. A detailed description of how the project will provide multi-benefit ecosystem, water quality, water supply, and watershed protection and public benefits;

The multi-benefits of this project will be provided through the facilitation and dissemination of information regarding trail access points and transportation alternatives through the data and content expansion program. This will allow individuals to locate and access the trails closest to them. Once there, trail users can choose to improve their comprehension and understanding of the local watersheds through a series of facts and interactive educational components while on the app. The improved website and application will provide our communities and educators with information and maps they can use to better understand the relationships between watershed features, trails and stormwater Low Impact Developments. In addition, the Project proposes to create a workforce program that will focus on employing at-risk youth through the local Conservation Corps, where they will gain valuable skills including GPS field collection, trail digitization, and IT skills focused on integrating the subsequent content onto the platforms. Effective environmental education represents more than a unidirectional transfer of information: rather, this suite of tools develops and enhances environmental attitudes, values, and knowledge, as well as builds skills that prepare individuals and communities to collaboratively undertake positive environmental action.

5. A detailed description of how the project achieves one or more of the purposes of Proposition 1 as stated in Water Code Section 79732(a);

The Project achieves four of the purposes of Proposition 1 as stated in Water Code Section 79732(a).

- #1) Protect and increase the economic benefits arising from healthy watersheds, fishery resources, and instream flow.

Trails in Los Angeles county generate numerous economic benefits for residents by providing free and low-cost recreation activities. Trails and their associated greenspaces enhance property values, provides recreational opportunities, improves human health, attract visitors, and provides natural goods and services such as filtering air pollutants and retaining stormwater (*reference The Economic Benefits of the Public Park and*

Proposition 1 Grant Application
TRAILS LA COUNTY EXPANSION: EQUITY, INCLUSION AND WATERSHED EDUCATION

Recreation System in the City of Los Angeles. TPL) Implementation projects support local jobs, boost spending at local businesses, and create local tax revenue.

The informational and educational aspects of this Project will promote responsible trail use and awareness of stewardship actions that help to keep watersheds healthy, further protecting the myriad of economic benefits offered by recreational trail networks. Environmental education facilitates connections between actionable research findings and on-the-ground practices, creating spaces where stakeholders collaborate to address dynamic environmental issues. Because of this commitment to application and iteration, environmental education can result in direct benefits to the environment and address conservation issues concretely.

#9) Protect and restore rural and urban watershed health to improve watershed storage capacity, forest health, protection of life and property, stormwater resource management, and greenhouse gas reduction.”

This Project will offer reliable multilingual information for people promoting official trails and safe and responsible use of the trail network. This will lead to a reduced reliance on crowd-sourced information, which can often direct visitors to unofficial trails or unsustainable routes. In addition, the Project will offer watershed awareness and conservation education which further supports the trail rules in place designed to keep people on the trails. Staying on trail and not using unofficial spur trails leads to greater protection of habitat and increased greenhouse gas sequestration, reduced erosion, and greater stormwater infiltration.

Recreational impacts on watershed health cannot be overstated. Recently trails throughout the County have experienced impacts due to overuse leading to trampled wetlands, tons of trash left in sensitive natural areas, vandalism and pollution. Effective environmental education builds skills that prepare individuals and communities to collaboratively undertake positive environmental action through stewardship and develops a frame of reference and greater understanding of the symbiotic relationships our landscapes have with the urban environment leading to the protection of the watershed.

#10) Protect and restore coastal watersheds, including, but not limited to, bays, marine estuaries, and nearshore ecosystems.

The improved website and application will provide our communities, stakeholders and educators with information they can use to understand the relationship between watershed features, trails and stormwater Low Impact Developments. Watershed stewardship is built into the educational component of the Project. Official trails will be featured directing trail users to locations where environmental impacts can be mitigated and monitored steering people away from sensitive environmental areas (SEA). Guidelines on trail use, benefits of conservation efforts, safety and information about stewardship activities will be featured. Awareness and understanding of environmental impacts and the activities leading to the degradation of the landscape decreases those

TRAILS LA COUNTY EXPANSION: EQUITY, INCLUSION AND WATERSHED EDUCATION

contributing activities. Watershed education can result in direct benefits to the environment and address conservation issues concretely. The Project seeks to create stewards, who support and promote the protection of our watersheds.

#11) Reduce pollution or contamination of rivers, lakes, streams, or coastal waters, prevent and remediate mercury contamination from legacy mines, and protect or restore natural system functions that contribute to water supply, water quality, or flood management.

The Project's Watershed Education program will give people the ability to relate to and better understand their surroundings while on the trail. By contextualizing their trail experience through the conveyance of information on their location, the local watershed, landscape features, flora and fauna on their phone app they can engage with their surroundings in a meaningful way. Studies have shown that by improving knowledge, instilling values, fostering beliefs and shifting attitudes, education has considerable power to help individuals reconsider environmentally harmful lifestyles and behavior. Therefore, education should always be included as part of the solutions proposed when tackling environmental issues. By increasing awareness and concern, education can encourage people to reduce their impact on the environment through more efficient use water supplies and mitigating non-point source pollution. Information provided on the website and app will illustrate pollution levels, and featured content articles will identify solutions.

6. A detailed description of how the project promotes and implements one or more of the objectives of the California Water Action Plan as stated in Section 1.3 of the guidelines.

According to the California Water Action Plan (CWAP), to be sustainable, solutions must strike a balance between the need to provide for public health and safety, protect the environment, and support a stable California economy. This Project touches on those objectives. A key component of the California Water Action plan is "Making conservation a way of life for Californians". Once implemented, the expansion of Trails LA County will not only advance the action but can inform decisions and plans that result in a more resilient and a more sustainable water infrastructure. The website and app updates will include water conservation components to ensure that Los Angeles County residents are knowledgeable about the importance of water conservation and will present actionable steps aimed at minimizing pollution and making conservation a lifestyle choice as well as providing real-time information about the watershed. In addition, featured content will address the restoration of important species and habitat, resiliency, and will discuss features of a sustainably managed water system and environment. Information on the digital platforms regarding conservation can be referred to by the community, stakeholders and planners to analyze and better understand landscape connections, their relationships, external influences, impacts, identify gaps in access to outdoor recreation opportunities and identify actionable solutions. Much has changed in the past half century, and our technology, values and awareness of how we use water has helped to integrate conservation into our daily lives. In addition, the educational components proposed for the Project should not be understated, the relative availability of the data will lead to a more informed community with an understanding of the importance of watershed

TRAILS LA COUNTY EXPANSION: EQUITY, INCLUSION AND WATERSHED EDUCATION

stewardship. The Trails LA County digital platform endeavors to create trail and watershed stewards through the engagement and inclusivity of non-profits, stakeholders and community partners. These relationships can have far-reaching impacts that could inspire creative solutions to complex problems, and it is in this potential that could result in a more resilient and sustainable urban landscape. This Project supports the continued effort to build on our water efforts and promote the innovation of new systems for increased water resilience and sustainability in turn making conservation a way of life.

7. A detailed description of how the project helps meet the State’s greenhouse gas emissions reduction targets, including a quantification of the metric tons of CO₂ or CO₂e removed or avoided, and an explanation of the methodology used to quantify this figure;

Funding from the grant can help inform the public of the benefits of the Clean Air Act and promote successful reductions of CO₂ or CO₂e. Although the enhancements cannot quantify metric tons of CO₂ or CO₂e, information can be utilized to support direct and indirect impacts of greenhouse gas emissions.

By highlighting transit accessible trails, the expansion of the platform will promote users in disadvantaged and high-need communities to walk, hike, bike, or ride with zero emissions from cars. Interactive educational components can provide the public with facts to promote and protect public health from the harmful effects of air pollution and other environmental issues. Offline trail location mapping reduces printed materials and enhanced reporting of issues on trails directly to multiple jurisdictions and trail-managing agencies also helps benefit maintenance operations who can better plan and prepare to divert organic material from landfills.

8. A detailed description of how the project promotes and implements other relevant regional and state plans and policies;

The Project promotes, implements and is consistent with numerous relevant regional and state plans and policies. A few key examples are:

2016-2021 Los Angeles County Strategic Plan- which includes goals to "Expand Access to Recreational and Cultural Opportunities" and to "Promote Active and Healthy Lifestyles." The Project is centered in expanding access to recreational trails which in turn promote active and healthy lifestyles.

Los Angeles County General Plan- The Project is also aligned with the General Plan. The General Plan notes the rising demands for trails resulting from population growth and urbanization, and states that more trails are needed specifically closer to population centers in the central portions of Los Angeles County, "where more residents could conveniently reap the recreation, health, and mobility benefits of trails." While not creating new trails, this Project will provide information about accessing trails, especially those close to population centers. The Parks and Recreation Element of the Los Angeles County General Plan provides policy direction for the maintenance and expansion of the County’s parks and recreation system. The purpose of the Parks and Recreation Element is to plan and provide for an integrated parks and

TRAILS LA COUNTY EXPANSION: EQUITY, INCLUSION AND WATERSHED EDUCATION

recreation system that meets the needs of residents. The Project is consistent with the goals and policies set forth in this Element which address the growing and diverse recreation needs of the communities served by the County.

Los Angeles Countywide Comprehensive Parks & Recreation Needs Assessment (Needs Assessment)- The Needs Assessment represents an unprecedented effort to document existing parks and recreation facilities in cities and unincorporated communities and to use these data to determine the scope, scale, and location of park need in Los Angeles County. The Project is consistent with the Needs Assessment in bringing equity access and connecting people in high need areas to the greater trail network of the county.

County Trail Manual- In May 2011, the Board of Supervisors adopted the County of Los Angeles Trails Manual, which provides County staff and developers with guidelines and standards for trail planning, design, development, and maintenance of County trails. The Project is consistent with the County Trail Manual which has a purpose to provide guidance to County departments that interface with trail planning, design, development and maintenance of hiking, equestrian, and mountain biking recreational trails, while addressing physical and social constraints and opportunities associated with the diverse topographic and social conditions that occur in the unincorporated areas.

California Statewide Comprehensive Outdoor Recreation Plan (SCORP)- serves as a guide for all public outdoor recreation in urban and rural neighborhoods, cities, and regions, and is inclusive of all local agencies within California, revealed that, according to user surveys, trails are the among the top-rated outdoor recreational activities both desired and used by respondents. Specifically, the SCORP notes that 1) unpaved multiuse trails and 2) paved trails were identified by Californians as two of the top ten most commonly used facility types. This is also consistent with local and national trends. The SCORP emphasizes the need to prioritize projects that provide opportunities for the top 20 outdoor recreation activities identified in the latent demand scoring in the survey of Public Opinions and Attitudes on Outdoor Recreation in California. The Project will promote expanded opportunities for the public to participate in the number one rated recreation activity, "walking for fitness or pleasure," as well as the 7th, 8th, and 16th rated activities: "wildlife viewing, bird watching, viewing natural scenery," "outdoor photography," and "day hiking on trails."

California Water Action Plan (CWAP)- According to the California Water Action Plan (CWAP), to be sustainable, solutions must strike a balance between the need to provide for public health and safety, protect the environment, and support a stable California economy. Once implemented, the Trails LA County Expansion Project can help to inform decisions and plans that result in a more resilient and sustainable water infrastructure. The website and app updates will include water conservation components to ensure that Los Angeles County residents are knowledgeable about the importance of water conservation and will present actionable steps aimed at minimizing pollution and making conservation a lifestyle choice as well as providing real-time information about the watershed. In addition, featured content will address the restoration of important species and habitat, resiliency, and will discuss features of a

Proposition 1 Grant Application
TRAILS LA COUNTY EXPANSION: EQUITY, INCLUSION AND WATERSHED EDUCATION

sustainably managed water system and environment.

9. Indicate whether the project will have matching funds from private, local, or federal sources, and if so, to what extent;

The past investments to Trails LA County have been significant. To date, more than \$3 million in local funding was directed to develop, launch and maintain Trails LA County. This does not take into account the considerable investment of County staff resources deployed to manage and direct this work. The current Project builds from this existing support and is anticipated to secure \$500,000 in matching funds from the Rivers and Mountains Conservancy.

10. Indicate whether the project will benefit a disadvantaged community;

Disadvantaged communities in Los Angeles, Burbank, Pasadena, Glendale and Monrovia will be prioritized for inclusion in the trail mapping and outreach for the Project. According to the CalEnviroScreen3.0, all five disadvantaged communities experience high levels of emissions and air pollution, with Los Angeles having the highest pollution burden of the five communities in the 99th percentile. Additionally, data from CalEnviroScreen 3.0 indicate that residents within the five identified disadvantaged communities experience high poverty and unemployment rates. The disadvantaged community of Los Angeles has the highest rates of the five communities with poverty in the 97th percentile and unemployment in the 79th percentile. According to the California Office of Environmental and Health Hazard Assessment, poverty can cause stress that further weakens the immune system of members living in disadvantaged communities as these members cannot afford healthy living and working conditions, nutritious food and necessary medical care. Evidence strongly suggests that increasing recreation options and improving access to trails or parks can have measurable effects on health by lowering childhood obesity rates, providing spaces for connections and interactions, and providing long-term health benefits. The Project will provide mapped and enhanced access to nearby recreational trails, which will directly support healthier living options and can improve health conditions.

The disadvantaged communities within Los Angeles and Glendale have been identified as areas critically lacking park and open green spaces. The Needs Assessment underscores the need for parks space, identifying these communities as having Very High Park Need Levels. Southeast Los Angeles has 1.1 acres of parkland per 1,000 residents, which is well below the County average of 3.3 acres of local parkland per 1,000 residents. More alarmingly, the southside of the City of Glendale has 0.3 acres of parkland per 1,000 residents. Lack of access and walkability to a park for a significant portion of these communities means fewer opportunities to gather with neighbors, family and friends, and negatively impacts community cohesion and health. This Project represents expanded trail access for these communities most in need of recreational offerings.

TRAILS LA COUNTY EXPANSION: EQUITY, INCLUSION AND WATERSHED EDUCATION

11. Indicate whether the project will use the services of local or state conservation corps;

County DPR will contract with local or State Conservation Corps members to implement key aspects of this Project. Specifically, the GPS field collection of trail data, digitizing trail information, and integrating the content on the platform will be conducted by Corps Members. This workforce development opportunity will employ at-risk young adults to provide opportunities and skills training to members of our community that could benefit most from the work experience.

The conservation corps address the challenge of youth unemployment by completing meaningful service projects. Corps Members gain hands-on work experience, build confidence, and develop skills in leadership, conflict resolution, and problem solving. Corps teach Corps Members specialized job skills needed in a range of environmental career fields. In addition to providing "hard skills" training, the Corps model (a crew of peers working together under experienced crew leaders and mentors) helps Corps Members develop the basic "soft skills" needed to obtain and keep a job.

12. A detailed description of any new or innovative technology or practices that will be applied to the project;

The Trails LA County platform will use a stewardship-first approach to bring together multiple jurisdictions and trail-managing agencies on a unified platform. The platform will be used as a community resource, management tool, and potential planning tool, and will be the first time the County of Los Angeles has synthesized all available trail data across the County. Moreover, agencies will regain control over the data and content presented to the public, including the ability to edit, update, and add information related to their respective trails in real-time. Timely alerts, closure notices, and updates to the current conditions of a trail can be vital to public safety. Additional innovative social features will be integrated into the platform to allow agencies to dialogue with the public via official, transparent channels of communication. Trail users, in turn, will have the opportunity to engage with the responsible trail-managing agencies in meaningful ways and contribute moderated content. This includes the ability to report maintenance issues, review trails, add their own pictures, and suggest edits to the trail descriptions and associated tags. County DPR will also explore options that will help measure the popularity of each trail on the platform and clearly communicate to visitors when usage at a particular trail is at its peak.

13. A detailed method of monitoring and reporting on the progress and effectiveness of the project during and after project implementation.

The enhanced Google Analytics collection will track desktop and mobile website activity such as session duration, pages per session, bounce rate etc. of individuals using the site, along with reported information on the source of the traffic. Demographics and interest sections include overview reports, along with age, gender, and interest categories reports allowing County DPR to better understand who users are and where they are coming from. Google Analytics does not track user zip codes; however, it provides geographic origins by city which can then be used and extrapolated to target outreach in

Proposition 1 Grant Application
TRAILS LA COUNTY EXPANSION: EQUITY, INCLUSION AND WATERSHED EDUCATION

high need areas. Along with outreach, the analytic data can also be utilized to target paid social media and advertising.

Similar to Google Analytics, the Outerspatial Mobile Analytics provides a platform that will provide the integration of data on unique users such as how many times an application was opened each day, most frequently searched trails, and searched trail features and facilities. This information will be used to measure the success of outreach programming directed toward disadvantaged communities. With the comprehensive data collection, County DPR in partnership with nonprofit organizations, will have the ability to monitor and report out metrics on the Project as well as implement potential enhancements to the platform including embedding a “Tell Us How We Are Doing” survey button on the web or app. The monitoring and adaptive management to optimize the effectiveness of the Project will occur both during and beyond the Project implementation.

Additional requirements for Section 79735(a) funding:

- **A description of how scope of work will protect or enhance and urban creek as defined in Section 7048(e);**

The Trails LA County Expansion Project supports the protection of urban creeks through education. Urban creek restoration not only involves removing non-native plants and planting native ones, but can include actions that promote conservation. Information on current conditions, contributing non-point source factors, impacts and solutions are also significant benefits and will be identified on the platforms. Effective watershed education enhances environmental attitudes, values, and knowledge, and builds skills that prepare individuals and communities to collaboratively pursue positive environmental action. Conservation Information can be accessed on the digital platforms allowing community members, stakeholders and planners to analyze and identify actionable solutions to protect urban creeks.

- **A description of how project is consistent with the Common Ground Plan.**

Three guiding principles define the Common Ground Plan: Growing Greener: Land, Enhancing Waters, and Planning Together. The Project builds on the Common Ground Plan's guiding principles and expands upon its foundation by creating a holistic platform that illustrates the connections of Los Angeles County's vital network of trails and waterways.

This Project applies the principle of Growing Land by improving access to open space throughout the region with the addition of additional miles mapped. Currently, the Trails LA County Website and App only includes data on 600+ miles of over 2,000 miles of trails throughout Los Angeles County. The addition of trails into the platform will offer trail users more options to select from and also encourage them to explore other local connections to outdoor recreational opportunities. Connections to open space and the network of trails would be highlighted, and information regarding trail connections, flora and fauna, and

TRAILS LA COUNTY EXPANSION: EQUITY, INCLUSION AND WATERSHED EDUCATION

watershed will be available for those on the trails who are curious about their surroundings, and for planners and educators who want to use the information to support their activities. Utilizing the Trails LA County platform to learn more about the local watershed and ecosystems will help to promote stewardship of the landscape.

Although the Trails LA County Expansion Project does not directly enhance water and waterways its ability to greatly impact future activities should not be understated. The innovative collection of data proposed will provide planners with the most comprehensive set of Los Angeles County trails data to date. A key component of the educational program is the collaborative development of the content with educators to ensure that the website and application supports educational goals and can be used both in the field while on a trail or in the classroom. Building upon the principle of Planning together to make it happen, County DPR staff will collaborate with cities, conservancies, local non-profits, and federal partners to create this innovative digital platform. Coordination across jurisdictions and boundaries is necessary to accomplish the vision for the website and app which has the potential to serve as a hub and an empowerment tool related to equity and access to our park systems. A workforce program will be developed to accomplish tasks associated with coordinating with partner agencies, GPS field collection of trail data, digitizing trail information, and integrating the content on the platform. Outreach to local non-profits and stakeholders is planned in order to ensure inclusivity and equity.

The Trails LA County Expansion Project's goal is to broaden access, inclusion and representation on the platform in a manner that truly reflects the rich diversity of the region. In addition, the Project will address the current lack of cohesion between data layers and will become a one-stop resource for countywide trail information. Educational components added will allow educators, and trail users to engage with and better understand the locations, relationship and function of various landscape features, local flora and fauna while walking along the trails on the app or on in the classroom on the website. The information will be presented in an easily digestible manner that will visually illustrate the connections between all the various networks and its watershed. The Project will result in a comprehensive and integrated digital resource for trail users that advances and encourages innovative collaborations with Cities and Agencies throughout the County of Los Angeles while delivering a framework of clear and accessible information to the community.

Proposition 1 Grant Application
TRAILS LA COUNTY EXPANSION: EQUITY, INCLUSION AND WATERSHED EDUCATION

RESPONSE TO EVALUATION CRITERIA

The Project achieves four or more of the thirteen purposes of Proposition 1 per Water Code Section 79732(a).

The proposed Project is consistent with 4 of the 13 purposes established in the Proposition 1 Water Code Section.

#1) Protect and increase the economic benefits arising from healthy watersheds, fishery resources, and instream flow.

Trails in Los Angeles county generate numerous economic benefits for residents by providing free and low-cost recreation activities. Trails and their associated greenspaces enhance property values, provides recreational opportunities, improves human health, attract visitors, and provides natural goods and services such as filtering air pollutants and retaining stormwater (*The Economic Benefits of the Public Park and Recreation System in the City of Los Angeles. TPL*) Implementation projects support local jobs, boost spending at local businesses, and create local tax revenue.

The informational and educational aspects of this Project will promote responsible trail use and awareness of stewardship actions that help to keep watersheds healthy, further protecting the myriad of economic benefits offered by recreational trail networks. Environmental education facilitates connections between actionable research findings and on-the-ground practices, creating spaces where stakeholders collaborate to address dynamic environmental issues. Because of this commitment to application and iteration, environmental education can result in direct benefits to the environment and address conservation issues concretely.

#9) Protect and restore rural and urban watershed health to improve watershed storage capacity, forest health, protection of life and property, stormwater resource management, and greenhouse gas reduction.”

This Project will offer reliable multilingual information for people promoting official trails and safe and responsible use of the trail network. This will lead to a reduced reliance on crowd-sourced information, which can often direct visitors to unofficial trails or unsustainable routes. In addition, the Project will offer watershed awareness and conservation education which further supports the trail rules in place designed to keep people on the trails. Staying on trail and not using unofficial spur trails leads to greater protection of habitat and increased greenhouse gas sequestration, reduced erosion, and greater stormwater infiltration.

Recreational impacts on watershed health cannot be overstated. Recently trails throughout the County have experienced impacts due to overuse leading to trampled wetlands, tons of trash left in sensitive natural areas, vandalism and pollution. Effective environmental education builds skills that prepare individuals and communities to collaboratively undertake positive environmental action through stewardship and

Proposition 1 Grant Application

TRAILS LA COUNTY EXPANSION: EQUITY, INCLUSION AND WATERSHED EDUCATION

develops a frame of reference and greater understanding of the symbiotic relationships our landscapes have with the urban environment leading to the protection of the watershed.

#10) Protect and restore coastal watersheds, including, but not limited to, bays, marine estuaries, and nearshore ecosystems.

The improved website and application will provide our communities, stakeholders and educators with information they can use to understand the relationship between watershed features, trails and stormwater Low Impact Developments. Watershed stewardship is built into the educational component of the project. Official trails will be featured directing trail users to locations where environmental impacts can be mitigated and monitored steering people away from sensitive environmental areas (SEA). Guidelines on trail use, benefits of conservation efforts, safety and information about stewardship activities will be featured. Awareness and understanding of environmental impacts and the activities leading to the degradation of the landscape decreases those contributing activities. Watershed education can result in direct benefits to the environment and address conservation issues concretely. The Trails LA County Expansion Project seeks to create stewards, who support and promote the protection of our watersheds.

#11) Reduce pollution or contamination of rivers, lakes, streams, or coastal waters, prevent and remediate mercury contamination from legacy mines, and protect or restore natural system functions that contribute to water supply, water quality, or flood management.

The Trails LA County Expansion Project's Watershed Education program will give people the ability to relate to and better understand their surroundings while on the trail. By contextualizing their trail experience through the conveyance of information on their location, the local watershed, landscape features, flora and fauna on their phone app they can engage with their surroundings in a meaningful way. Studies have shown that by improving knowledge, instilling values, fostering beliefs and shifting attitudes, education has considerable power to help individuals reconsider environmentally harmful lifestyles and behavior. Therefore, education should always be included as part of the solutions proposed when tackling environmental issues. By increasing awareness and concern, education can encourage people to reduce their impact on the environment through more efficient use water supplies and mitigating non-point source pollution. Information provided on the website and app will illustrate pollution levels, and featured content articles will identify solutions.

The Project will provide multiple benefits related to water quality, water supply, and/or watershed protection and restoration. (5 pts)

Los Angeles County contains six major watersheds, significant areas of coastline, multiple lakes, tributaries, rivers, and creeks. The proposed Project seeks to expand watershed and water supply including featured content posts and/or videos on watershed, water quality and water protection will be created to increase understanding,

TRAILS LA COUNTY EXPANSION: EQUITY, INCLUSION AND WATERSHED EDUCATION

comprehension, familiarity, and vocabulary of the watershed for Los Angeles County Trails users while supporting the stewardship of our trails.

The Project results in more reliable water supplies pursuant to the California Water Action Plan. (5 pts)

The Trails LA County Expansion Project supports the California Water Action Plan's objectives and advances the action "Conservation must become a way of life for everyone in California". This holistic program is focused on providing information and access to communities of color and economically/educationally disadvantaged communities who are at a greater risk of impact from environmental hazards. The website and app updates will include water conservation components aimed at ensuring that Los Angeles County residents are aware of the benefits of water conservation and will present actionable steps focused on minimizing pollution and making conservation a lifestyle choice. Featured content on the website and app could include information about the restoration of important species and habitat, resiliency, watershed health, the impacts of non-point source pollution, and discuss features of a sustainably managed water system and environment. The expansion of the platform will promote alternative transportation and the community outreach program will create opportunities for stakeholders and community members to collaborate and collectively discuss local access, connectivity and conservation issues. Research has shown that education has considerable power in helping individuals reconsider environmentally harmful lifestyles and behavior. This Project will help to shift attitudes through environmental comprehension and will help people relate actions to impacts making conservation a way of life.

The Project results in restoration or protection of important species and habitat pursuant to the California Water Action Plan. (5 pts)

The objectives in the California Water Action Plan include aggressive ecosystem restoration and other steps that will restore fish populations and benefit wildlife. These actions are to protect and restore the resiliency of our ecosystems will help support fish and wildlife populations, improve water quality, and restore natural system functions. While the Project does not directly restore species or habitats in the Delta, Salton Sea or other locations as specified in the California Water Action Plan, it does provide opportunity to support and expand funding for protecting important lands by mapping and sharing watershed and habitat information. Having protected lands accessible via trail maps and applications can prevent key lands from conversion and can also provide land conservation and linkage opportunities for regional planning efforts which result in a healthier watershed by reducing polluted runoff and maintaining a properly functioning ecosystem.

The Project results in more resilient and sustainably managed water infrastructure pursuant to the California Water Action Plan. (5 pts)

A key component of the California Water Action plan is making conservation a way of life for Californians. The proposed Project can be used to inform decisions and plans that result in a more resilient and a more sustainable water infrastructure. The Trails LA County Expansion Project will provide a comprehensive and integrated digital resource

TRAILS LA COUNTY EXPANSION: EQUITY, INCLUSION AND WATERSHED EDUCATION

that presents clear and accessible trail and watershed information to the user community. Conservation and efficiency are also keys to reducing the energy needed to pump, transport, treat and deliver water. Information on the digital platforms regarding water conservation can be used by the community and planners to analyze and better understand landscape connections, their relationships, external influences, impacts, and identify gaps in access to outdoor recreation opportunities. The integration of additional GIS data layers and data would feature a more extensive Los Angeles County trail network, and its connection to transportation, watershed data, waterway information, and the identification of flora, fauna and Significant Ecological Areas (SEA).

In addition, the educational components proposed for the Project should not be understated, the relative availability of the data will lead to a more informed community with an understanding of the importance of watershed stewardship. The Trails LA County digital platform endeavors to create trail and watershed stewards through the engagement and inclusivity of non-profits, stakeholders and community partners. These relationships can have far-reaching impacts that could inspire creative solutions to complex problems, and it is in this potential that could result in a more resilient and sustainable urban landscape. This Project supports the continued effort to build on our water efforts and promote the innovation of new systems for increased water resilience and sustainability.

The Project employs new or innovative technology or practices, including decision support tools that support the integration of multiple jurisdictions, including, but not limited to, water supply, flood control, land use, and sanitation. (5 pts)

The Project will use a stewardship-first approach to bring together multiple jurisdictions and trail-managing agencies on a unified platform. The platform will be used as a community resource, management tool, and potential planning tool, and will be the first time the County of Los Angeles has synthesized all available trail data across the county.

Agencies will regain control over the data and content presented to the public, including the ability to edit, update, and add information related to their respective trails in real-time. Timely alerts, closure notices, and updates to the current conditions of a trail can be vital to public safety. Additional innovative social features will be integrated into the platform to allow agencies to dialogue with the public via official, transparent channels of communication.

Trail users, in turn, will have the opportunity to engage with the responsible trail-managing agencies in meaningful ways and contribute moderated content. This includes the ability to report maintenance issues, review trails, add their own pictures, and suggest edits to the trail descriptions and associated tags. We will also explore options that will help measure the popularity of each trail on the platform and clearly communicate to visitors when usage at a particular trail is at its peak.

TRAILS LA COUNTY EXPANSION: EQUITY, INCLUSION AND WATERSHED EDUCATION

The Project is located in or adjacent to communities defined no less than 81 percent disadvantaged as defined by the CalEnviroScreen 3.0 tool. (5 pts)

The proposed Project includes the communities of Los Angeles and Glendale and Pasadena all identified by the CalEnviroScreen 3.0 Tool as disadvantaged by a percentage of 81 percent or more. Additionally, data from CalEnviroScreen 3.0 indicate that residents within the identified disadvantaged communities experience high poverty and unemployment rates. The disadvantaged community of Los Angeles has the highest rates of poverty in the 97th percentile and unemployment in the 79th percentile. Los Angeles pollution burden in the 99th percentile is also the highest of all the identified disadvantage communities.

Applicant has proven that implementation of the project is feasible. (5 pts)

County DPR successfully executed the creation and launch of the Trails LA County platform which consists of a website and mobile application featuring trail maps, guides and information to connect locals and visitors to the diverse landscapes our region has to offer. The work done as part of the Trails LA County development included review of trails owned and managed by other agencies within the County. This was an extensive trails data inventory curation and calibration for integration onto the platforms. The Trails LA County is now a vital public resource offering authoritative information on more than 600 miles of trails operated by multiple land managers agencies throughout the County, including many partners in the Santa Monica Mountains. The current Project builds and expands on the foundation of Trails LA County and is ready for immediate implementation.

Specific to the equity inclusion aspects of the Project, County DPR has demonstrated ability to convene community toward advancing park and trail equity. The Countywide Parks and Recreation Needs Assessment was an unprecedented effort to document existing parks and recreation facilities in cities and unincorporated communities and to use these data to determine the scope, scale and location of park need in Los Angeles County. Community Engagement Workshops were held for 178 study areas across the county. This Needs Assessment was adopted in 2016 and serves as a key strategic plan for County DPR.

Applicant has financial capacity to perform project on a reimbursable basis. (5 pts)

Most of the hundreds of grants administered by County DPR have been carried out on a reimbursement basis. County DPR, under the leadership of the Los Angeles County Board of Supervisors and in close coordination with the Los Angeles County Chief Executive Office, has a proven record of completing reimbursement-based grant projects. County DPR has a high fiscal capacity to carry out the Project on a reimbursement basis.

Applicant, or active project partner, has successfully completed multiple projects of similar size and scope. (5 pts)

Since 1965, County DPR has successfully administered and completed more than 1,000 grants from various funding sources, including the California Natural Resources Agency and other State, local, and federal grant programs and private foundations. County DPR has a proven record of completing projects within its stated budget and by the

TRAILS LA COUNTY EXPANSION: EQUITY, INCLUSION AND WATERSHED EDUCATION

performance period end date. County DPR has continued to meet post-award requirements in a timely manner, including the submission of project status reports, the submission of payment requests, and other requirements that are specific to each grant program (e.g., appraisals that meet federal standards, federally regulated requirements, etc.).

Examples of related and multi-benefit projects recently completed by County DPR include:

Trail Inventory Project

County DPR identified the need to review trails owned and managed by other agencies within the County. The Countywide Trails Data Inventory reviewed existing trail databases and readily available public trail data to identify target agencies, confirm interest, and provide individual scopes and fees for up to six cities or agencies for including their trails on the trails.lacounty.gov website.

County DPR consultant, Placeworks, coordinated with the selected trail-owning/trail-managing agencies to determine the type, quality, and completeness of their trails data. Individualized scopes and fees were created to address refinement or collection trail data, and incorporation into the County's trail geodatabase for inclusion in trails.lacounty.gov.

Model Green Park Project at Eugene A. Obregon Park

The Model Green Park Project at Eugene A. Obregon Park consisted of installation of storm water capture features in an existing 10-acre park site including detention basins, native plant vegetated swales, and rain barrels; replacement of traditional turf with deep-rooted grass species and native plants and planting of additional low-water use shade trees where there are existing gaps in the canopy; removal of impermeable concrete from the community building courtyard and parking area and replacement with a permeable material; and creation of a native plant demonstration garden adjacent to the community building entrance. The project was awarded \$836,625 and funded through the Urban Greening Program (Proposition 84) administered by the State of California Natural Resources Agency. Matching funds included \$289,036 in local Proposition A funding, \$100,000 in Proposition 84 funds from the State Coastal Conservancy, and \$50,000 from the applicant. The project was completed ahead of schedule in December 2018 and within the specified budget.

The project is a partnership between two or more organizations and each organization has committed to contributing toward project implementation. (4 pts)

Trails LA County is a partnership led by County DPR in collaboration with the National Park Service, California State Parks, the Santa Monica Mountains Conservancy, the Mountains Recreation and Conservation Authority, the Mountains Restoration Trust and the Catalina Island Conservancy. This Project will continue these partnerships and expand to additional jurisdictions such as the US Forest Service and cities throughout the

TRAILS LA COUNTY EXPANSION: EQUITY, INCLUSION AND WATERSHED EDUCATION

county to digitize and add trails into the mapped network. This Project will also provide opportunity for successful outreach to underserved communities in working with local organizations to collaborate, leverage their networks/channels, and expand outreach to ensure communities with greatest needs for access are reached and help inform the enhancements to the platform. Over eight Community based organizations in the Santa Monica Mountains Conservancy service area have been identified as possible strategic community partners. In addition, the project implementation to provide data content to expand the official trail network on the website and trails application will include work by the location conservation corps.

Applicant, or project partner, has 1+ years experience maintaining and operating projects of similar size and scope. (4 pts)

Since 1944, County DPR has been meeting the recreational needs of residents and visitors from all over the world through programming, facilities, land acquisition and environmental stewardship and more. Today, County DPR owns 182 beautiful parks including natural areas, wildlife sanctuaries, lakes, trails, arboreta and botanic gardens and local, community and regional parks.

County DPR is committed to providing social, cultural and recreational opportunities for all to enjoy. The mission and goals of County DPR are accomplished through unwavering support from the Los Angeles County Board of Supervisors, County Chief Executive Office, partnerships with other County Departments, Friends Groups, Foundations, non-profit groups and other organizations and agencies and through a team of talented and dedicated employees and volunteers who understand completely how Parks Make Life Better!

This Project will be managed and operated by the Trails Section from the Planning and Development Agency of County DPR. This Section is staffed with professional trails planners with specialty in the following:

- Multi-Use Trails Master Planning and Trail Alignments Studies
- Ongoing maintenance and development of Trails Website: trails.lacounty.gov
- Maintenance of the County Trails Plan (element of the General Plan)
- Trails Obligations and Trails Conditions for Land Development Applications
- Trails Assessments, GPS Mapping and Maintenance of County Multi-Use Trails Geodatabase
- Development of Multi-Use Trails Improvements Conceptual Plans
- Inter-jurisdictional Trails Partnerships (Park to Playa, Emerald Necklace, County Bicycle Master Plan, Crest to Coast, Rim of the Valley)
- County Standards and Guidelines for Trails Facilities, Access and Signage
- County Trails Manual Updates
- Inter-jurisdictional MOUs for trail closures and re-routes
- Acquire and Manage Trail Easements and MOUs with conservancies and private property owners
- Trails User Group Interface on Trails Planning, Construction and Management Issues

Proposition 1 Grant Application
TRAILS LA COUNTY EXPANSION: EQUITY, INCLUSION AND WATERSHED EDUCATION

Applicant has identified funding for proper maintenance throughout the expected life of the improvements. (4 pts)

County DPR will utilize local funds for the maintenance of this Project throughout its lifetime. County DPR is contracted with the County Internal Services Department to host the server, provide subscriptions and software, and to provide technical support for the website and the LA County Trail application. Any needed technological upgrades will also be supported by LA County local funds.

Applicant has identified maintenance funding for at least 2 years after completion. (4 pts)

County DPR will utilize local funds for the maintenance of this Project throughout its lifetime. County DPR is contracted with the County Internal Services Department to host the server, provide subscriptions and software, and to provide technical support for the website and the LA County Trail application. Any needed technological upgrades will also be supported by LA County local funds.

Project adds new trail or recreational resources not available within a 0.5 mile radius. (3 pts)

The Project adds new recreational resources to dozens of disadvantaged communities as defined by SB 535. The communities of Sun Valley in the San Fernando Valley, for example, are near a vast network of trails in the Verdugo Mountains, however, most of these trails and amenities have not been mapped by land managers. Even one of the largest urban parks in North America, Griffith Park, which serves the local neighborhoods of Hollywood, Atwater Village, Glassell Park, and West Glendale, does not have its trails or other assets of the park digitized to easily share with the public.

The task of gathering detailed information about trails is often relegated to enthusiasts who spend a considerable amount of time doing so by word of mouth or on various crowdsourced websites. Even basic information about these trails, such as where to park, how difficult the trail is, and what you can expect to see, has not been made widely available to the public. Providing accurate information directly from trail managers ensures that all trail users, both beginners and experts, can approach the trails with confidence.

This Project will also provide an opportunity for innovative outreach strategies to underserved communities. By working with local organizations and leveraging their networks/channels, this Project ensures that communities with the greatest need are reached. Every resident and visitor of Los Angeles County, not just the experienced and seasoned trail users, will have access to the natural splendor of trails with ease and confidence.

The project upgrades an existing regional trail or river parkway to protect its continued use and enjoyment by the public. (3 pts)

The Project upgrades an existing database for regional trail network information to promote and protect its continued use for passive and active enjoyment by the

TRAILS LA COUNTY EXPANSION: EQUITY, INCLUSION AND WATERSHED EDUCATION

public. The expansion of the Trails LA County platform will increase awareness of trail safety, preparedness and best practices to empower users to explore trails more confidently. Additionally, the self-guided platform will feature interpretive information to highlight the natural attributes of the trail for users to educate themselves on the environment and biodiversity of public trails and help discourage and mitigate the misuse of trails and the surrounding land. The educational feature has the potential to increase stewardship public trails and contribute to their protection and preservation.

Applicant has conducted outreach to the affected communities. (3 pts)

County DPR is committed to equitable access to parkland and quality of recreational services and the pivotal role of community engagement in advancing social equity and cohesion. The 2016 Park Needs Assessment (Needs Assessment) is a prime example of County DPR's community focused approach to project development and implementation. The Needs Assessment process was driven entirely by community input to prioritize park capital improvement projects in Very High Needs/High Needs communities. Community outreach included disseminating multilingual flyers, surveys, partnerships with community-based organizations to conduct information sharing events and meetings with key stakeholders to determine the needs and concerns and prioritize projects that would comprehensively meet those needs. Conversely, County DPR will employ the same strategies for the proposed Project; acknowledging that the success of the Project is working with community partners to ensure that community needs are met. County DPR has identified the following community partners in the project planning and implantation efforts:

- Community Nature Connection
- Friends of the Los Angeles River
- Great Outdoors – Los Angeles
- Latinos Outdoors
- Pacoima Beautiful
- Black Girls Trekkin
- Walk'n Rollers
- Hike LA

Funding from the proposed grant will help promote successful outreach to underserved communities within the County. As part of the grant, County DPR will work with these local organizations to collaborate, leverage their networks/channels, and expand outreach to ensure communities with greatest needs for access are reached and help inform the enhancements to the platform.

The project adds visitor-serving amenities, accessibility, and public safety improvements to public parkland with multiple ecosystem benefits. (2 pts)

Project elements will consist of linguistic improvements to the County All Trails platform that will feature translation options in both Spanish and Mandarin as alternatives to typical Google or Bing Translate that may provide incorrect translations and information. Additional featured upgrades will include enhanced location discoverability for nearby trails that are more visible based on the user's location, trail discoverability with nearby transit locations and hubs, feature trails to highlight ADA accessible trails, parking

Proposition 1 Grant Application

TRAILS LA COUNTY EXPANSION: EQUITY, INCLUSION AND WATERSHED EDUCATION

access, trailhead information, restroom locations, tools for trip planning, and resources for preparedness including weather and trail conditions and safety information. Through the upgrades to the app and overall County All Trails platform, County DPR will have the ability to gather analytics during peak usage to gather information on the most popular trails that are being used along with most searched trails and features. The proposed enhancements will be an overall improvement of the user experience for both trail users and trail operations.

The project provides non-personal interpretive elements that will significantly enhance appreciation and enjoyment of a watershed resource. (2 pts)

The Trails LA County platform currently shares information about the flora and fauna found along our trails and is used to share information about meaningful topics such as trail safety and preparedness. Watershed data will be added to the Trails LA website and application. This includes watershed and sub watershed outlines, names, sizes and basic data. In addition, rivers, creeks and major waterbodies will also be highlighted to illustrate watershed connections.

The project creates a new venue for education and/or interpretation activities that promote water conservation and stewardship or enhances an existing venue. (1 pt)

The proposed Project will expand upon educational themes in terms of watershed, water supply, and other key educational themes determined to be critical through our collaborative outreach process. Through the expansion of the educational component of the Trails LA County website and app, users – including educators, will be able to utilize the platform on field trips or self-guided nature walks, to support environmental comprehension and encourages the stewardship of our trails and watersheds. Featured content posts on Watershed Education will be created to increase understanding, comprehension, familiarity, and vocabulary of the watershed. Water conservation tips, flora and fauna identification found along our trails and how they support watershed health are examples of watershed educational elements that will be featured on the platform.

The project results in new public access to a watershed resource with high interpretive and/or educational value or enhances existing access. (1 pt)

Los Angeles County residents will benefit directly through the facilitation and dissemination of information regarding trail access points and transportation alternatives. The Project adds new recreational resources and trail access to dozens of disadvantaged communities as defined by SB 535. This will allow individuals to locate and access the trails closest to them. Trails previously unidentified will be included and access points to those trails will be identified. Trail users can choose to Improve their comprehension and understanding of the local watersheds through a series of facts and interactive educational components while on the app. The improved website and application will provide our communities and educators with information and maps they can use to better understand the relationships between watershed features, trails and stormwater Low Impact Developments.

Proposition 1 Grant Application
TRAILS LA COUNTY EXPANSION: EQUITY, INCLUSION AND WATERSHED EDUCATION

Project has approval from all landowners to complete the project, or Applicant is the landowner. (4 pts)

County DPR is the landowner or has approvals from all jurisdictions for trails included in Trails LA County platforms. The Project will only include jurisdictions and landowners that agree to join the working partnerships. Several jurisdictions, such as the US Forest Service and City of Los Angeles have already committed to participate.

EXTRA CONSIDERATION POINTS

QUANTIFIABLE CARBON REDUCATION POINTS

The project contributes to tree canopy cover and/or greenways in urban areas to mitigate heat island effects and promote public health and recreation. (3 pts)

The proposed Project lends itself to many educational opportunities including volunteer opportunities. The Project will promote local volunteer events in collaboration with organizations such as local conservation corps, that may include tree planting as a way to educate and promote public health benefits tree planting provides in parks and outdoor spaces.

The project acquires and/or maintains wildlife corridors and linkages to provide connections between areas of undeveloped lands, particularly significant public lands and key habitat ecosystems. (2 pts)

The Project provides mapped accessible information on watersheds, trail linkages and will naturally include wildlife corridors comprised of key habitats such a riparian or coastal sage scrub plant communities. Each trail page will offer the flora and fauna of the trail segment. A benefit of the Project is the mapping will expose opportunities for future critical linkages, as multiple jurisdictional data will be compiled into one dataset. Also, by offering public facing maps, lands become accessible and appreciated by the public and are held more strongly in public trust for conservation.

The project develops or maintains multi-use trails that connect communities, provides access to public resources and reduces vehicle miles traveled. (2 pts)

The enhancements to the County All Trails platform will enable users to report trail conditions and maintenance concerns on the app. In addition, the improvements to the platforms will include access to public resources, public transit information, bike connectivity information as well as trail preparedness resources to maximize user experience.

The project engages local communities through outreach, education, and interpretation regarding long-term stewardship and climate change awareness. (2 pts)

Community engagement and outreach is vital to the success of the proposed Project and will expand upon County DPR's mission of equity, stewardship and accessibility to parklands and recreational opportunities by engaging local community and stakeholders similar to the efforts conducted during the 2016 Parks Needs Assessment. Over eight community-based organizations in the Santa Monica Mountains Conservancy service

TRAILS LA COUNTY EXPANSION: EQUITY, INCLUSION AND WATERSHED EDUCATION

area have been identified as possible strategic community partners to collaborate, leverage their networks/channels, and expand outreach to ensure communities with greatest needs for access are reached and help inform the enhancements to the platform.

ADDITIONAL CRITERIA

Project utilizes a local job training entity for a portion of the work. (5 pts)

County DPR will contract with local or State Conservation Corps members to implement key aspects of this Project. Specifically, the GPS field collection of trail data, digitizing trail information, and integrating the content on the platform will be conducted by Corps members. This workforce development opportunity will employ at-risk young adults to provide opportunities and skills training to members of our community that could benefit most from the work experience.

Project has secured matching funds of at least 25 percent of total project costs. (5 pts)

The current Project builds from this existing support and is anticipated to secure \$500,000 in matching funds from the Rivers and Mountains Conservancy.

Project is within 1 mile of public transportation. (5 pts)

Based on the more than 600 miles of trails that are currently mapped on the Trails LA County platform, approximately 30% of trail access points are within a 10-minute walk, or ½ of a mile from a transit stop. In other words, out of the 809 trail access points and trailheads, 236 of them are within a half of a mile of a bus stop or rail station. Trails that can be accessed via public transit will be promoted on the Trails LA County platform for those that do not have ready access to a personal vehicle.

Project results in additional uses for users of a wide range of ability levels. (5 pts)

The platform will provide users with information on ADA accessibility including walking paths, ramps, parking, as well as provide users with trail preparedness information to accommodate users of different abilities such as identifying difficulty of trails. The app will also feature some of County DPR's most innovative trails such as the Placerita Canyon Braille trail (Braille Trail). The Braille Trail implemented with a State grant, is one of only two trails in Southern California specifically designed to address the needs of visually impaired individuals and significantly increased opportunities for visually impaired individuals to independently experience nature on a trail specifically designed for their needs. Additionally, the website will continue to have speech functionality and County DPR will continue efforts to engage community members including individuals of different abilities to obtain feedback on what resources are needed to maximize their recreational experience.

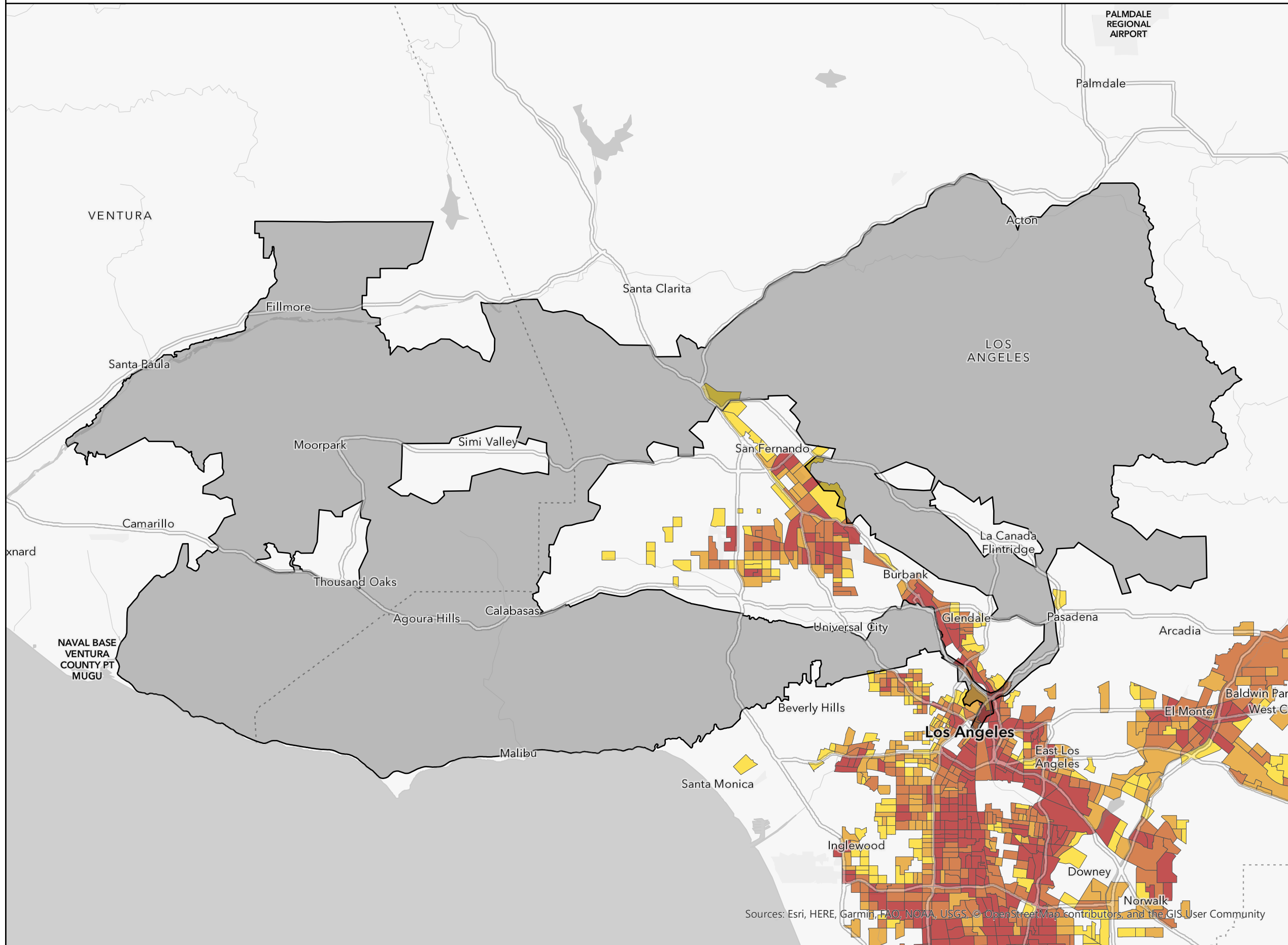
Trails LA County Expansion: Equity, Inclusion and Watershed Education

SCHEDULE												
SMMC Prop 1 Proposal	2021				2022				2023			
	1st QT	2nd QT	3rd QT	4th QT	1st QT	2nd QT	3rd QT	4th QT	1st QT	2nd QT	3rd QT	4th QT
Task 0: Project Management and Initiation												
Kick-Off Meeting and Project Startup												
Stakeholder Meetings												
Project Coordination, Grant Administration, and Reporting												
Project Close-Out												
Task 1: Data Review, Assessment, and Integration												
Identify Key Partnerships												
Procure Mapping Equipment and Software												
Develop Related Trail Content												
Coordinate with Key Partner Agencies												
Develop Website/App Governance Structure												
GIS Data and Content Integration on Digital Platforms												
Task 2: Watershed Education Program												
Preliminary Identification of Watershed Education Themes												
Stakeholder Outreach & Consultation												
Finalize Educational Program Priorities												
Watershed Mapping												
Programming and Content Development & Implementation												
Task 3: Enhanced Inclusion & Access												
Preliminary Identification of Potential Areas of Improvement												
Stakeholder Outreach & Consultation												
Feasibility Research & Evaluation												
Finalize Enhancement Priorities												
Programming and Content Development & Implementation												
Task 4: Marketing, Communications & Outreach												
Selection of Strategic Community Partners												
Marketing, Communications & Outreach Strategy Development												
Stakeholder Outreach & Consultation												
Employ Limited Term Student Intern												
On-going Social Media Posting												
Coordinate with User Groups for Featured Content Development												
Run Paid Media Advertising												
Task 5: Workforce Development												
Contract with Local Conservation Corps												
Review Available Data and Documentation												
Train Corp Members												
Field Mapping of Trails, Amenities, and Photography												
Coordinate with Partners to Refine Data and Content												

Trails LA County Expansion: Equity, Inclusion and Watershed Education

DISCLAIMER:

Data is shown for park and trail planning purposes only. Some parks and trails shown do not exist currently and are planned for the future, or they exist but are not yet officially designated. Permission to use unofficial trails should not be assumed. Some trails may traverse private property and suggested alignments do not imply rights of public use.



County of Los Angeles

■ SMMC Zone

CalEnviroScreen 3.0 Percentile Range

- 80-85%
- 85-90%
- 90-95%
- 95-100% (highest scores)

County of Los Angeles
Department of Parks and Recreation
Planning and Development Agency



Sources: Los Angeles County eGIS Data Repository,
CalEnviroScreen 3.0 June 2018 Update SB535
Created: 7/14/2020 by [Zachary Likins]
DPR (Trails Planning)

Sources: Esri, HERE, Garmin, FAO, NOAA, USGS, © OpenStreetMap contributors, and the GIS User Community

**County of Los Angeles Department of Parks and Recreation
OVERHEAD ALLOCATION NOTICE REQUIREMENT**

The County of Los Angeles Department of Parks and Recreation allocates any overhead costs per all grant agreements or contracts.